



**ADRIANTOOL**  
CORPORATION



**EXPERIENCE • PRECISION • QUALITY**

# PRODUCT CATALOG

517.263.6530



[www.adriantool.com](http://www.adriantool.com)



## TABLE OF CONTENTS

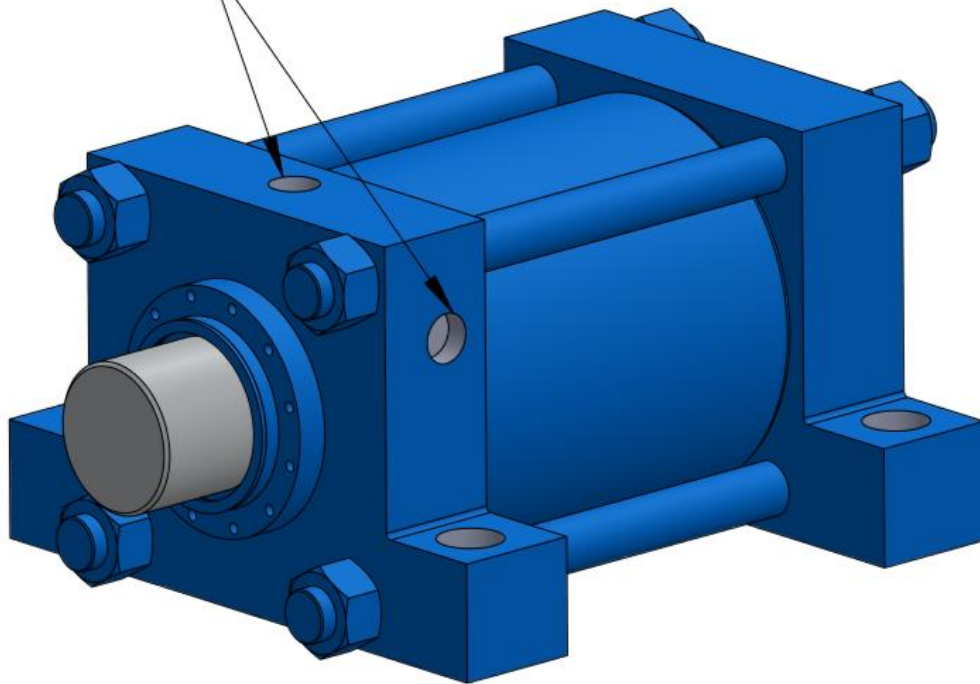
<b>Extruder Components</b>	<b>Pages</b>
Shot Cylinder Assemblies	3
Thrust Bearing Assemblies	4-6
Rotary Grease Union Assembly	7
Ball Spline Assemblies	8
Water Cooled Feed Throat - 350 Series	9
Air Cooled Extruder Retrofit - 350R2/R3	10
High-Output Screws & Barrels	11
Nozzles	12-13
<b>Die Head Components</b>	
Pre-Finish Cylinders	14-15
Mandrel Adjust Assembly	16-17
Choke Screw Assembly	18-20
Die Head Components	21-24
Front Die Adjustment Assemblies	25-28
Sliding Support Fork Assembly	29
<b>Air System Components</b>	
Make-Up Air Filter & Regulator Assembly	30
High-Flow Air System Assembly	31
<b>Clamp Packages</b>	
15X34 Clamp w/ Single Rotac	32
15X27 Dbl Light Duty Clamp	33
15X27 Dbl Medium Duty Clamp	34
15X28.5 Dbl Heavy Duty Clamp	35
15X28.5 Dbl Maximum Duty Clamp	36
Center Rotac Adapter Assembly	37
*Note: Other Clamp Package Sizes Available	
<b>Manual Clamp Grease Station</b>	38
<b>Swing Arm Assemblies and Components</b>	
Light Weight Aluminum Swing Arm Parts	39

<b>Cooling Bed Components</b>	<b>Pages</b>
Cooling Bed Assembly	40
Live Roller Assembly	41
<b>Trimmer Components</b>	
PL-90175 Trimmer Enclosure for a model 10039 – 10041	42
112" Trimmer Load Beam Assembly	43-44
136" Trimmer Load Beam Assembly	45-46
Trimmer - Hybrid Brass Rails	47-48
Platen Drive Assembly W/ Splined Shaft (10039-10041)	49
Platen Drive Upgrade Dbl 50 Chain w/ Keyed Shaft (10039-10041)	50
Platen Drive Upgrade Dbl 60 Chain w/ Keyed Shaft (10039-10041)	51-52
Trimmer Tensioner (10039-10041)	53
Trimmer Base (10039-10041)	54
Trimmer Index (Ferguson)	55-56
Ferguson Gear Box Assembly	57
S-Bar Assembly (10026)	58
PL-90094 S-Bar Assembly (10039-10041)	59
S-Bar Assembly (Aluminum Upgrade 10039-10041)	60

## Maximum Duty Shot Cylinders w/ 1" Ports

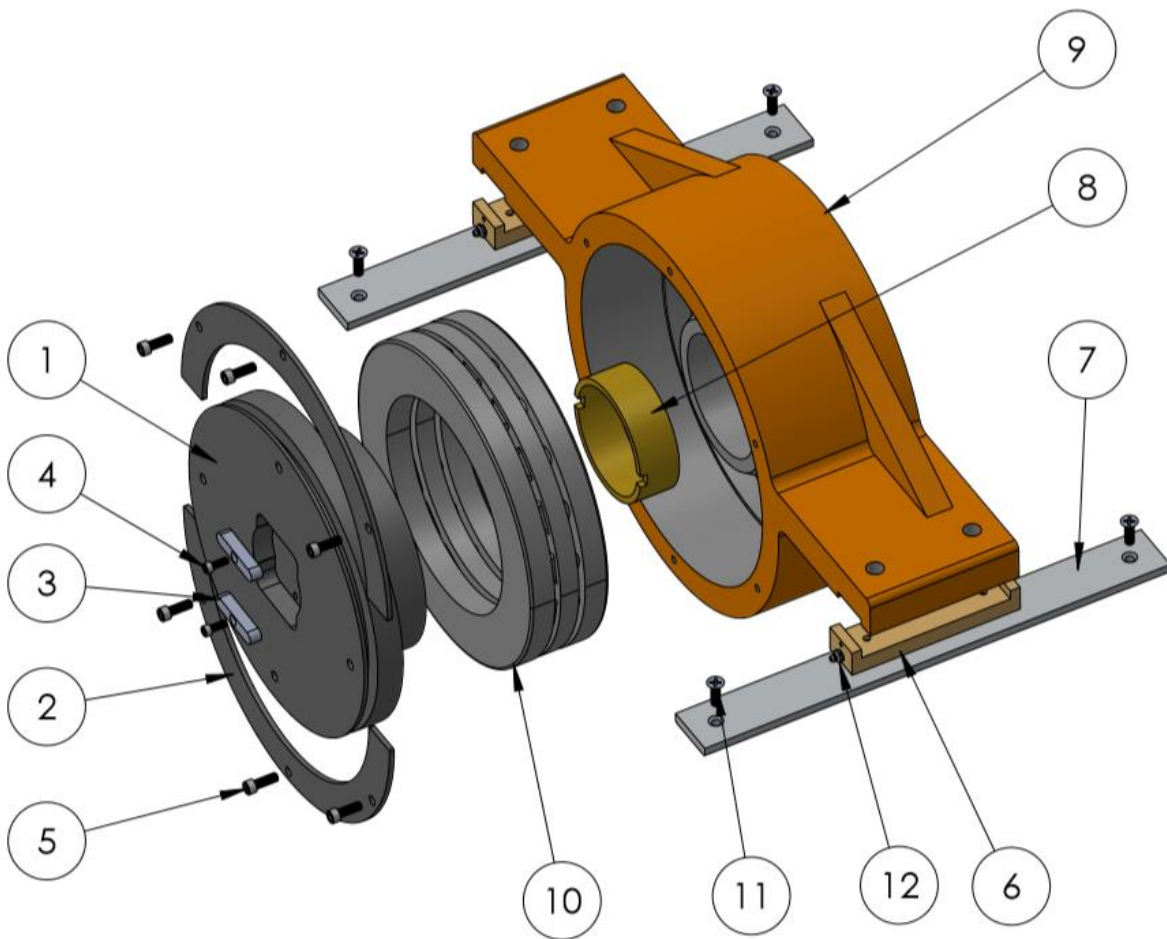
Item	Adrian	OEM	Description	Qty.
1	91246	834011	Shot Cylinder, 6" Stroke (5800 & 350R1)	1
2	90782	840476	Shot Cylinder, 8" Stroke (350R2)	1
3	91049	*****	Shot Cylinder, 9.25" Stroke (350R2 & R3)	1
4	92304	*****	Shot Cylinder – 10" Stroke (R2000 90MM)	1
5	91070	*****	Mounting Bolts, 1 1/2–6 x 4 1/2" SHCS *Included with Cylinder	4
6	91418	832928	Alignment Key Stock *Included with Cylinder	1
7	91428	*****	Maximum Duty Mounting Bolts – Super Bolts	4
8	6615533	1130022	Manatrol Valve for Shot Cylinder (Not Shown)	1

1" NPT PORTS



## 474287 - Thrust Bearing Assembly 350R2 & 350R3 – Traditional

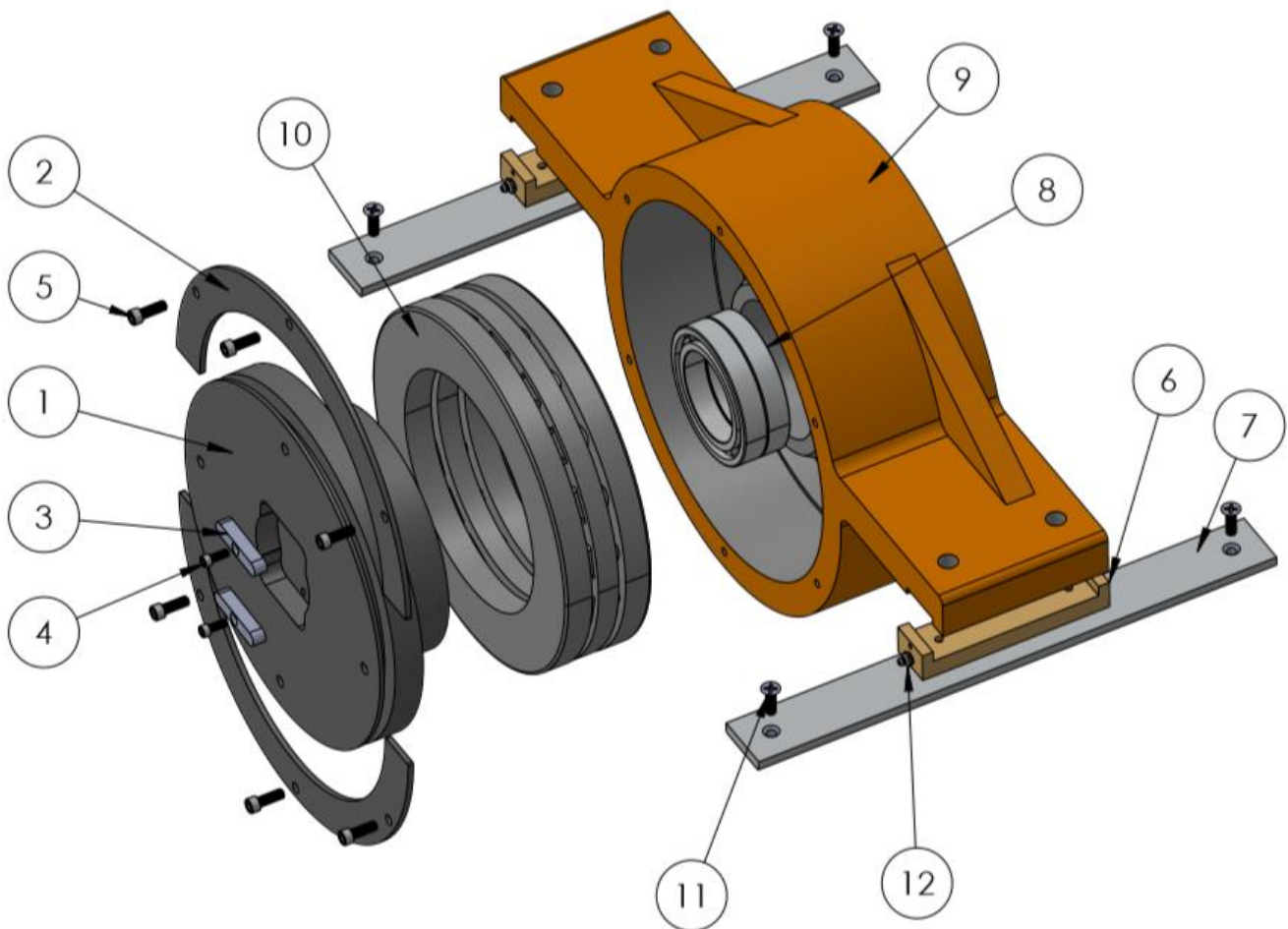
Item	Adrian	OEM	Description	Qty.
1	475797	840474	Rotary Housing	1
2	475791	840473	Baffle Ring-Split Set	1
3	413948	832785	Key	2
4	363550	212009	1/4 – 20 x 5/8" SHCS	2
5	367550	214009	5/16 – 18 x 7/8" SHCS	6
6	475257	840604	Shoe	2
7	475217	840634	Rail	2
8	413574	832048	Brass Bushing	1
9	475798	840475	Stationary Housing, Casting	1
10	235556	620001	Thrust Bearing with Races	1
11	92559	247024	5/16-18 x1" FHCS	4
12	6255565	1600010	Grease Zerk, 1/8 Straight	2





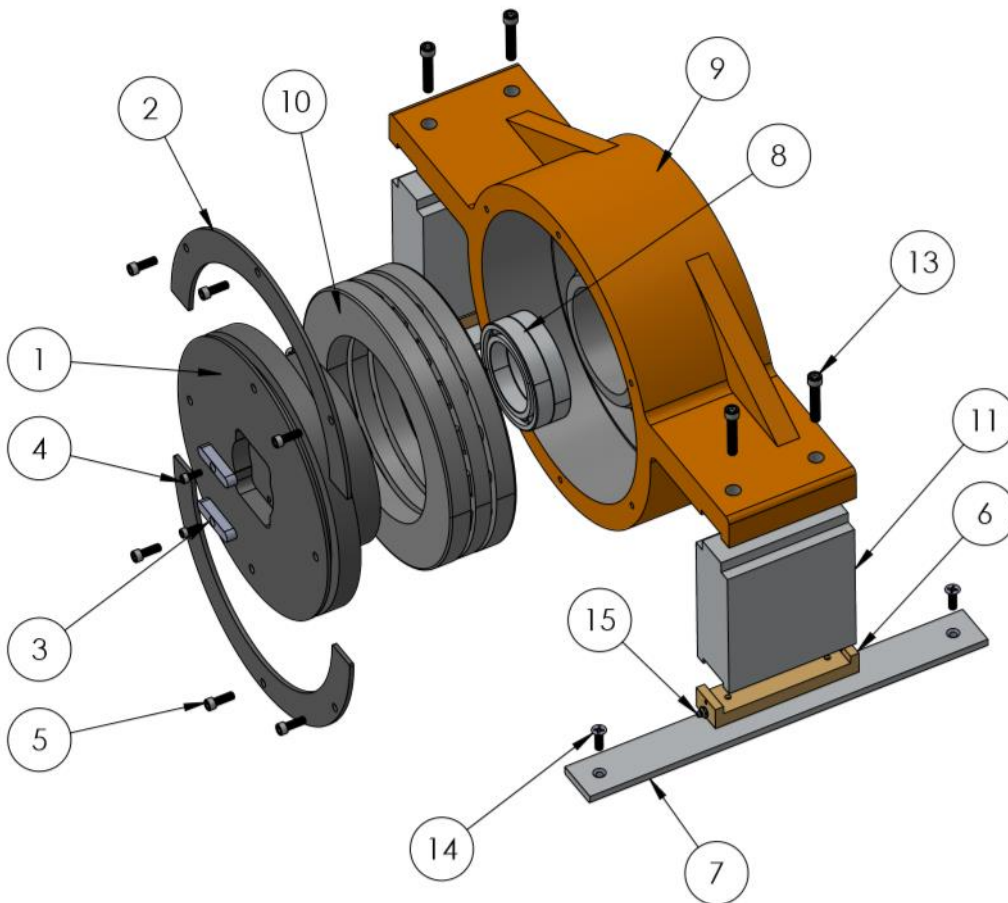
## 91384 - Thrust Bearing Assembly 350R2 & 350R3 – Maximum Duty

Item	Adrian	OEM	Description	Qty.
1	91360	*****	Rotary Housing	1
2	475791	840473	Baffle Ring-Split Set	1
3	413948	832785	Key	2
4	363550	212009	1/4 – 20 x 5/8" SHCS	2
5	367550	214009	5/16 – 18 x 7/8" SHCS	6
6	475257	840604	Shoe	2
7	475217	840634	Rail	2
8	91359	*****	Single Row Radial Ball Bearing	2
9	475798	840475	Stationary Housing, Casting	1
10	235556	620001	Thrust Bearing with Races	1
11	92559	247024	5/16-18 x1" FHCS	4
12	6255565	1600010	Grease Zerk, 1/8 Straight	2



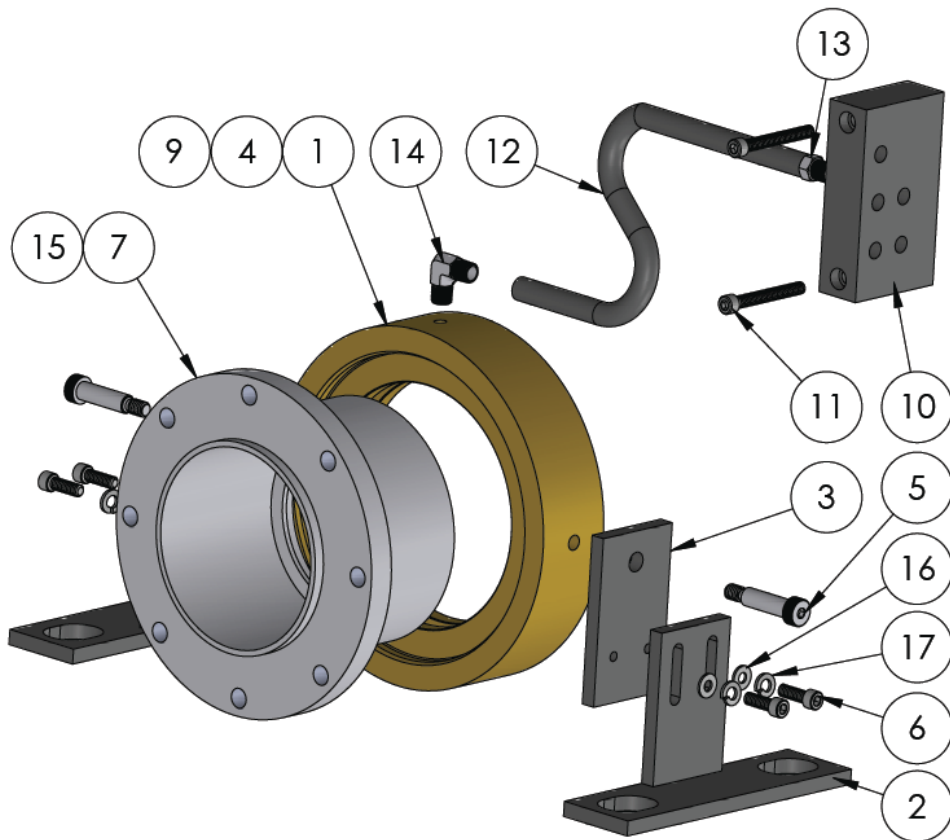
## 91384-1 Thrust Bearing Assembly 350R1 – Maximum Duty

Item	Adrian	OEM	Description	Qty.
1	91360-1	*****	Rotary Bearing Housing	1
2	475791	840473	Baffle Ring-Split Set	1
3	413948	832785	Key	2
4	363550	212009	1/4 – 20 x 5/8" SHCS	2
5	367550	214009	5/16 – 18 x 7/8" SHCS	6
6	475257	840604	Shoe	2
7	475217	840634	Rail	2
8	91359	*****	Single Row Radial Ball Bearing	2
9	475798	840475	Stationary Housing, Casting	1
10	235556	620001	Thrust Bearing with Races	1
11	91156	*****	Thrust Bearing Riser	2
12	91854	*****	Limit Switch Spacer (not shown)	1
13	362561	216013	3/8-16 x 2" SHCS	4
14	92559	247024	5/16-18 x 1" FHCS	4
15	6255565	1600010	Grease Zerk, 1/8 Straight	2



## 90377 - Rotary Grease Union Assembly - 350R2 & 350R3

Item	Adrian	OEM	Description	Qty.
1	673379	142247	Rotary Grease	1
2	673397	142274	Mount Rotary Union Grease	2
3	673398	124475	Mount Adjust Rotary Grease Union	2
4	955564	700018	Oil Seal	1
5	90450	*****	5/16-18 x 1 1/4" Shoulder Bolt	2
6	323553	262002	1/4-20 x 3/4" SHCS	4
7	472381	846253	Ball Spline Cap	1
8	6255565	1600010	Grease Zerk Straight (Not Shown)	1
9	90455	*****	Oil Seal	2
10	90477	*****	Junction Block	1
11	90478	*****	1/4-20 x 2" SHCS	2
12	90591	*****	Nylon Tubing	6 ft.
13	90592	*****	Fitting Straight	1
14	90593	*****	Fitting 90 Degree	1
15	90398	*****	10-32 x 1/4" BHCS	4
16	90403	*****	1/4" Flat Washer	2
17	90469	*****	1/4" Lock Washer	2
18	472383	846252	Ball Cap Bushing (Not Shown)	1





## Ball Spline Assemblies - 10 Groove Design

### 350R2, 350R3, 350R5, & 400R11

Item	Adrian	OEM	Description	Qty.
1	90758	142322	Ball Spline Assembly (350R2, 350R3, 350R5, & 400R11)	1
5	434857	828504	Keys, Extruder Screw	4
6	365534	215528	10 – 24 x 1/2" SHCS	4
7	413948	832785	Keys, Thrust Bearing	2
8	363550	212009	1/4 – 20 x 5/8" SHCS	2
9	492304	876298	Pickle Fork – 3.5" Extruder (Not Shown)	1

### 5835 & 350R1

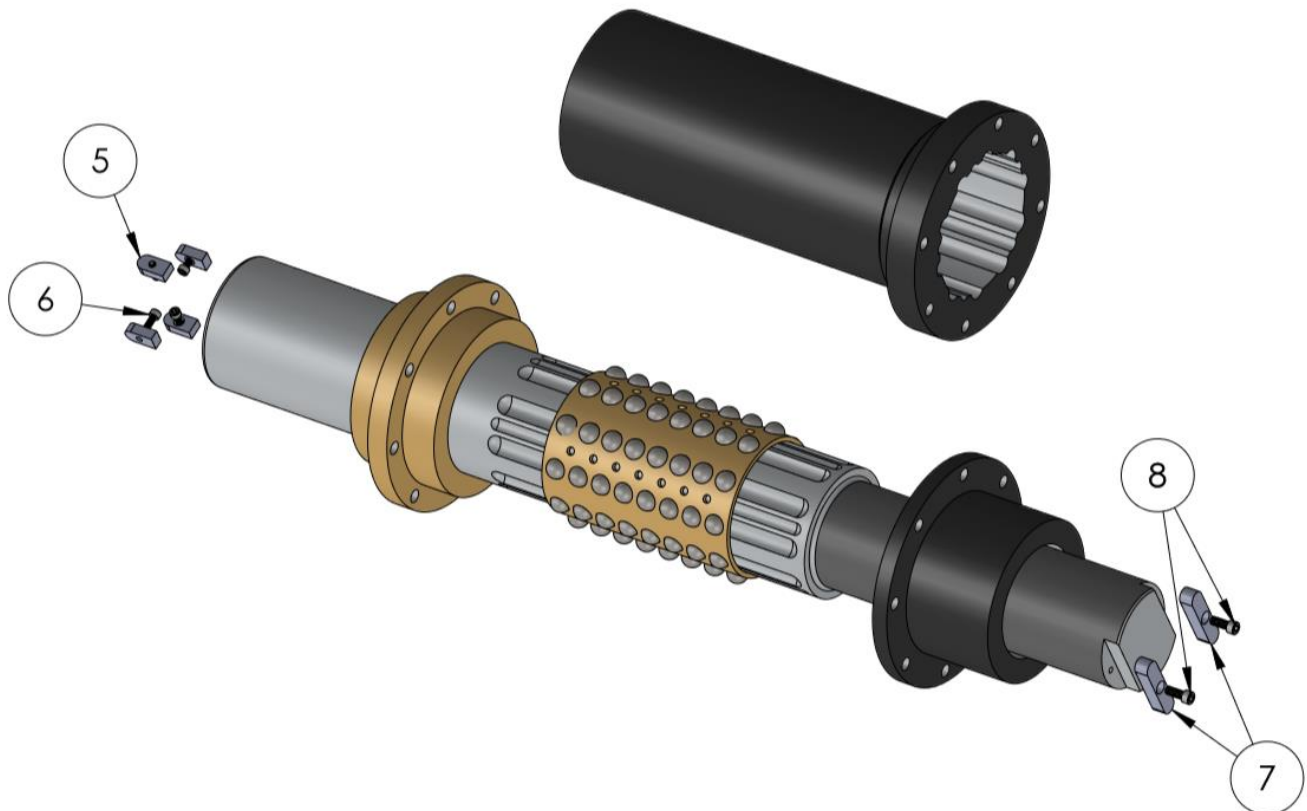
Item	Adrian	OEM	Description	Qty.
1	439128	827365	Ball Spline Assembly – (5835 & 350R1)	1

### 350R4 & 400R20

Item	Adrian	OEM	Description	Qty.
1	472456	846801	Ball Spline Assembly – (350R4 & 400R20)	1

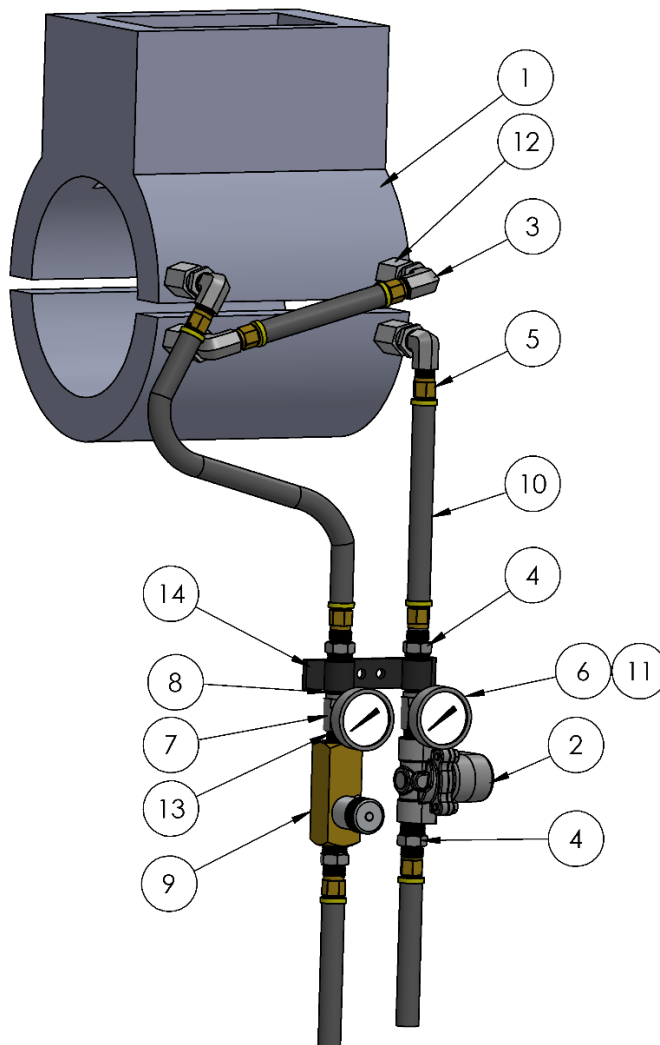
### R2000 & UR-90

Item	Adrian	OEM	Description	Qty.
1	671311	143233	Ball Spline Assembly – 90MM (R2000 & UR-90)	1



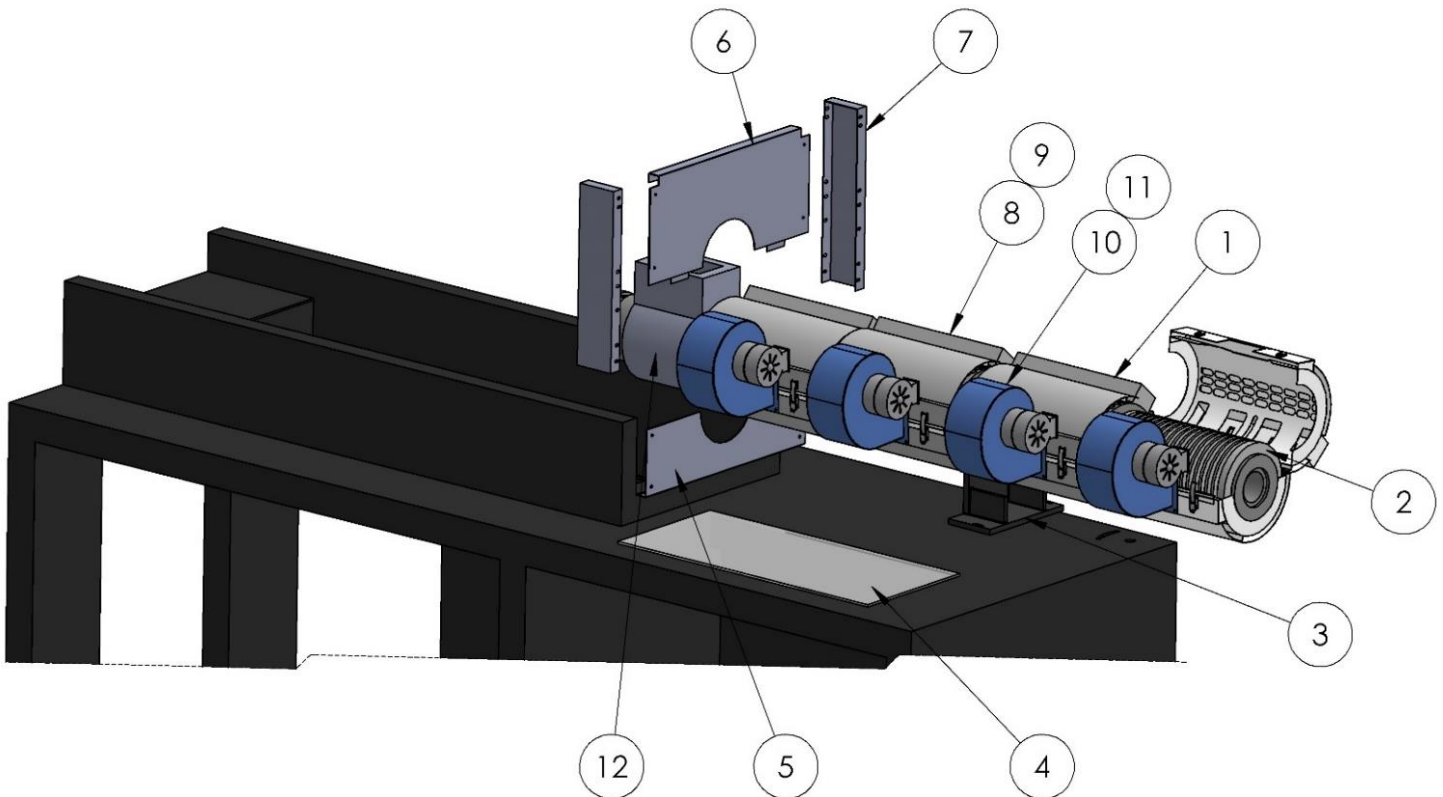
## Water Cooled Feed Throat - 350 Series

Item	Adrian	Description	Qty.
1	498743	Feed Throat, Water Cooled	1
2	92091	Skinner Valve	1
3	91605	1/2" JIC X NPT 90°, Fitting	4
4	91606	1/2" JIC X NPT, Fitting	4
5	91624	1/2" Push-On Hose Barb	8
6	92274	2" Dial Thermometer 1/4" NPT	2
7	92598	1/2" NPT TEE	2
8	91755	Nipple, 1/2 Close	2
9	92077	Flow Control, 1/2" NPT	1
10	91663	Hose, 1/2" Air - 10 Ft	1
11	91975	1/2" NPT x 1/4" NPT Reducer Bushing	2
12	92682	1/2" NPT x 1/2" Swivel NPT Swivel	4
13	92683	1/2" NPT x 1/2" Swivel NPT Straight	2
14	92684	Bracket, 1/2" Couplings	1



## PL-91660 - Air Cooled Extruder Retrofit - 350R2/R3

Item	Adrian	OEM	Description	Qty.
1	92470-1	*****	Shroud, Stainless	4
2	92470	*****	Cast-In Heater, Aluminum	4
3	91659	*****	Front Barrel Support	1
4	92578	*****	Lexan Top Cover, Hydraulic Compartment	1
5	92580	*****	Bottom Guard	1
6	92579	*****	Top Guard	1
7	92647	*****	Guard, Side Extension	2
8	91874	*****	Thermocouple J-Type, 10' Lead	4
9	91367	*****	Thermocouple Adapter, 2.5" LG	4
10	91965	*****	Extruder Blower, Dayton	4
11	91965-1	*****	Blower Guard	4
12	498743	*****	Feed Throat, Water Cooled	1



# Maximum Performance Extruder Screws & Barrels

## 350R2 & R3

Item	Adrian	OEM	Description	Qty.
1	676577	141044	3.5" High-Output Extruder Screw 350R2	1
2	475770	840449	3.5" Extruder Barrel 350R2	1

## 350R1, 5700, & 5800

1	674610	127403	High-Output Extruder Screw 350R1, 5700, 5800	1
2	473713	842432	Extruder Barrel 350R1, 5700, 5800	1

## R2000

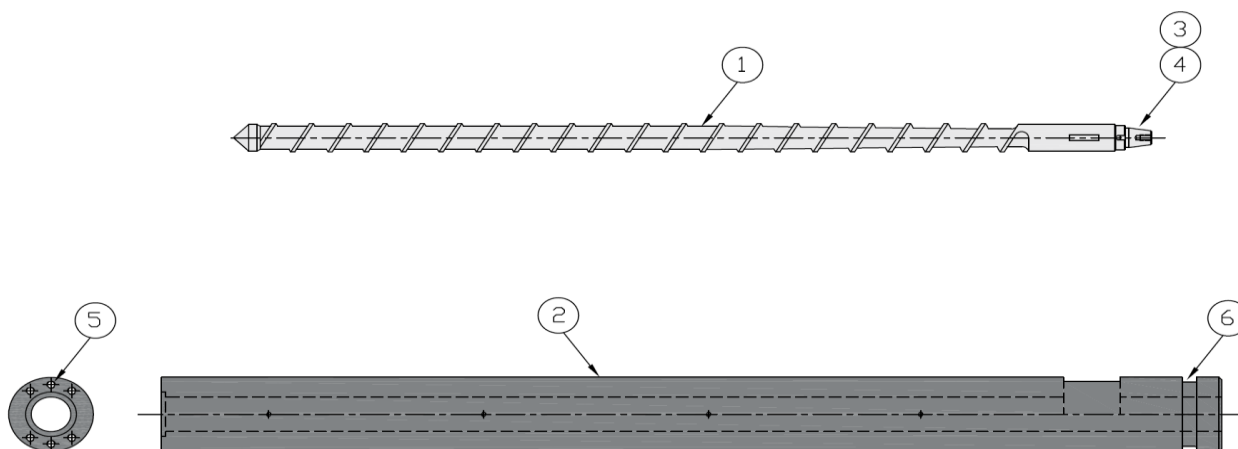
1	671315	143230	90mm High-Output Extruder Screw R2000	1
2	671330	143229	90mm Extruder Barrel R2000	1
1	686478	151845	100mm High-Output Extruder Screw R2000	1
2	686477	151844	100mm Extruder Barrel R2000	1

## 400R11

1	678230	145629	400R11 Extruder Screw	1
2	669618	117135	400R11 Extruder Barrel	1

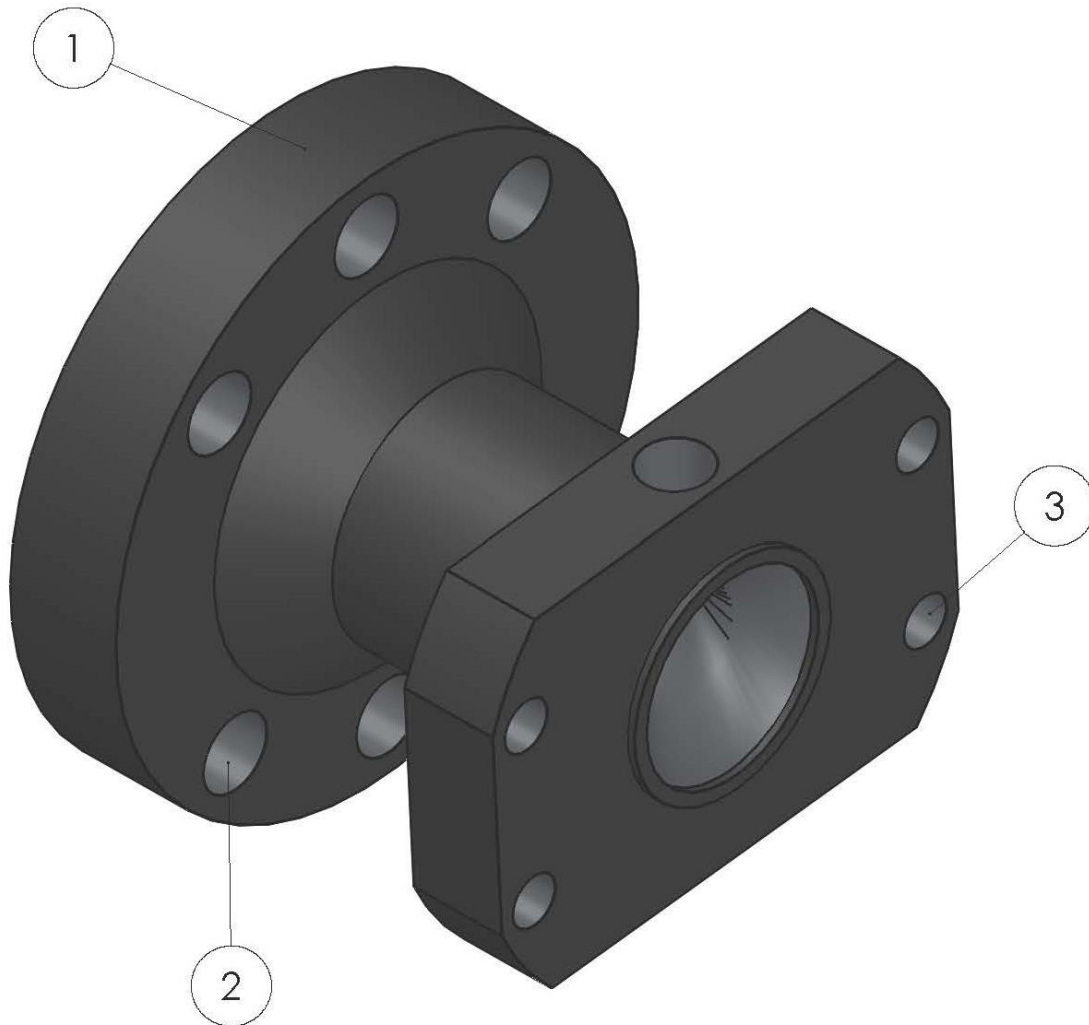
## Accessories

3	434857	828504	Keys, Extruder Screw (5700-350R3)	4
4	365534	210028	10-24 X 1/2" SHCS	4
5	90434	*****	3/4-10 X 2 3/4" SHCS – Nozzle Mounting Bolts	6
6	418719	835437	Split-Ring (5700-350R3)	1
7	492304	876298	Pickle Fork – 3.5" Extruder (Not Shown) (350R2&3)	1
8	91640	*****	Anti-Rotation Drill and Bushing Tool (Not Shown)	1
9	91846	*****	Anti-Rotation Pin (Not Shown)	1
10	362552	216006	3/8-16 x 1 1/4" SHCS For Split Ring	6
11	91367	*****	Thermocouple Adapter – 2.5"	4
12	91366	*****	Thermocouple J Type w/72" Lead	4



## -1 Style Extruder Nozzle – Straight Design

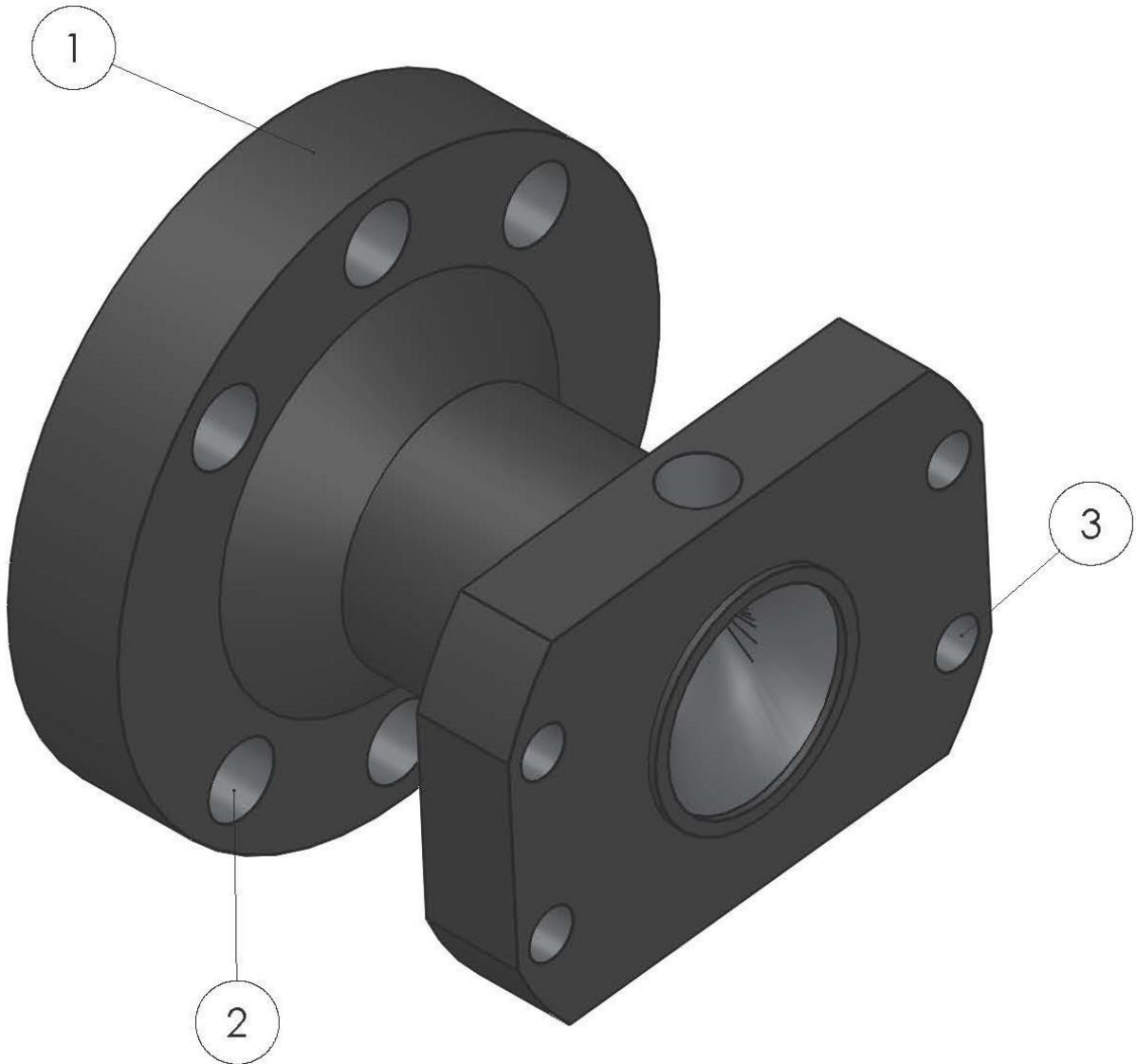
Item	Adrian	OEM	Description	Qty.
1	662508	116095	Nozzle	1
2	90434	*****	3/4-10 x 2 3/4" LG SHCS / Extruder Barrel	6
3	90433	*****	5/8-11 x 2 1/2 LG SHCS / Extrusion Manifold	4
4	91249	*****	Melt Bolt Thermocouple (Not Shown)	1
5	91775	*****	Heater Band, Nozzle -1 Style (Not Shown)	1





## -4 Style Extruder Nozzle – Straight Design

Item	Adrian	OEM	Description	Qty.
1	472019	846937	Nozzle	1
2	90434	*****	3/4 – 10 x 2 3/4" LG SHCS / Extruder Barrel	6
3	90433	*****	5/8 – 11 x 2 1/2 LG SHCS / Extrusion Manifold	4
4	91249	*****	Melt Bolt Thermocouple (Not Shown)	1
5	91188	*****	Heater Band, Nozzle -4 Style (Not Shown)	1



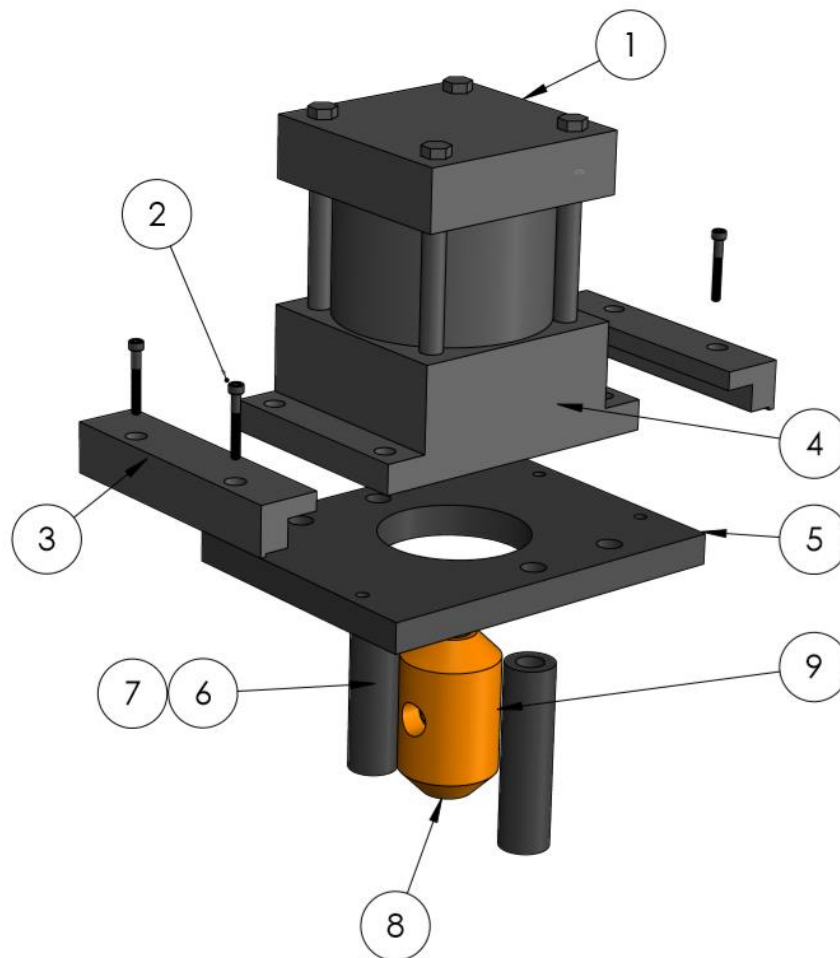
## Pre-Finish Assembly, Pull-Up or Ram Down / Pneumatic

Item	Adrian	OEM	Description	Qty.
1	6355551-B	1200003	Blow Pin Cylinder, 4" Bore x 3/4" Stroke	1
2	362552	216006	3/8-16 x 1 1/2" SHCS	4
3	413722	832466	Clamp, Cylinder	2
4	411531	833023	1/4" Internal Spacer to Limit Retraction (Not Shown)	1
5	413727	832464	Mounting Plate, Cylinder	1
6	413728	832465	Spacer, Pre-Finish	2
7	360562	219016	1/2-13 x 7" SHCS	2
8	413729	832467	Air Adapter, 1/2-20 Thread (5/8-18 Thread Available)	1
9	92476	*****	3/8-16 x 3/8 Set Screw, Socket w/ Brass Tip	1

### OPTIONAL SELF-CENTERING AIR ADAPTERS

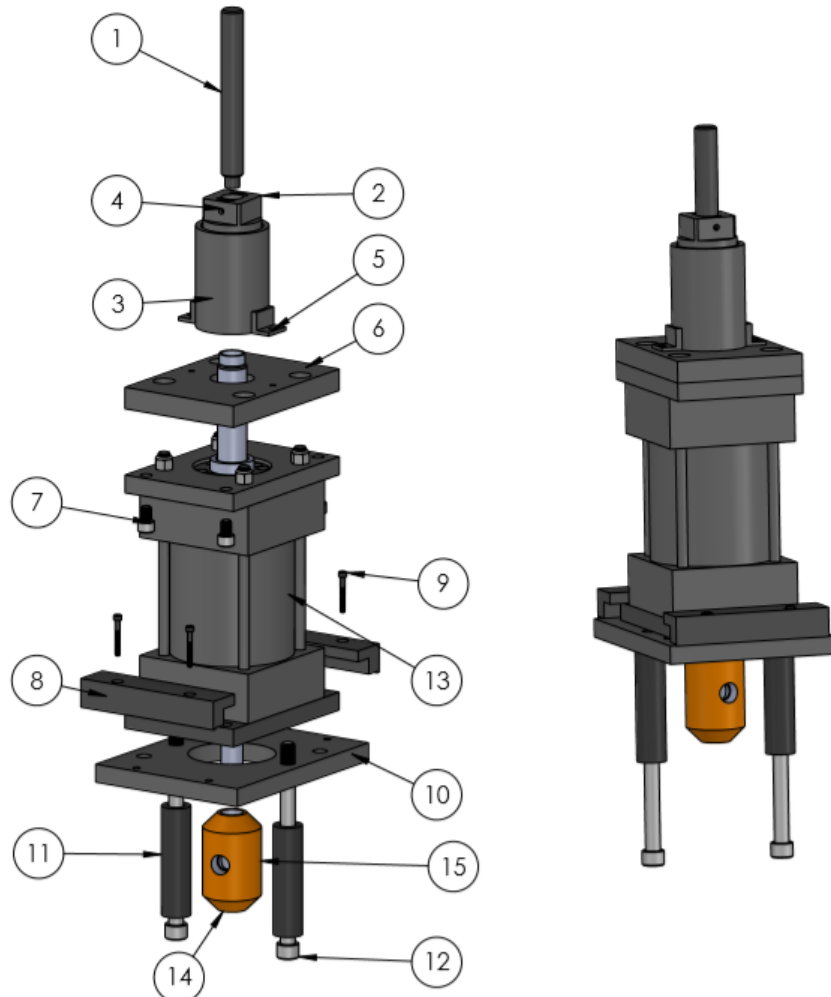
10	90349	*****	Air Adapter Assembly 1/2-20 Thread	1
11	90370	*****	Air Adapter Assembly 5/8-18 Thread	1

**Note: Blow Pin Cylinder is Manufactured with a 3/4" Stroke**



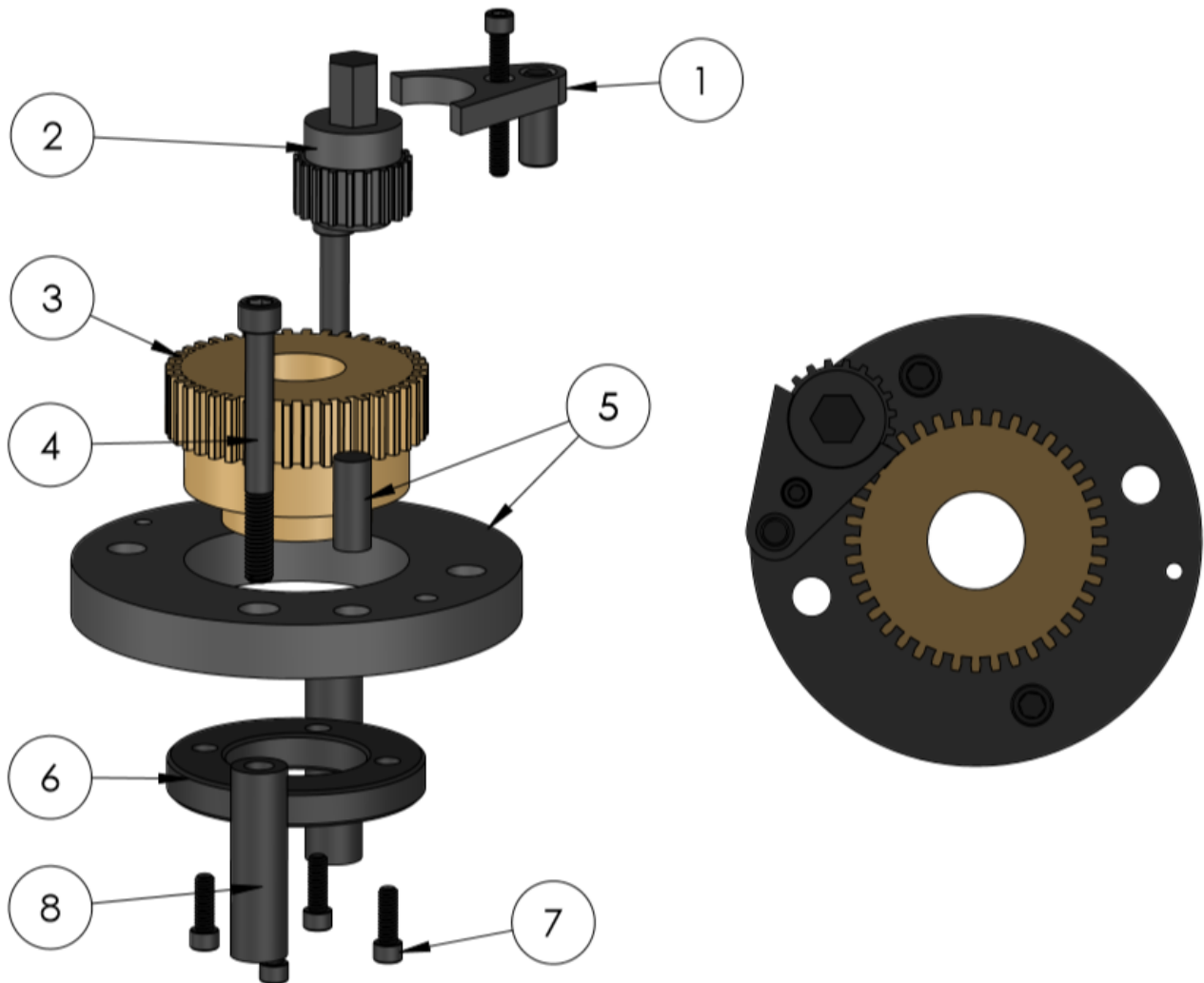
## Pre-Finish Assembly, Pull-Up or Ram Down w/ Blow Pin Adjustment

Item	Adrian	OEM	Description	Qty.
1	441662	883116	Rod Extension	1
2	651021	103963	Adjustment Nut	1
3	447541	884083	Guard, BP Adjustment	1
4	90329	*****	1/4-28 x 1/2" SHSS	2
5	378536	245021	1/4-20 x 1/2" BHCS	2
6	441445	883880	Mounting Plate, Cylinder	1
7	362552	216006	3/8-16 X 1 1/4" SHCS	4
8	413722	832466	Clamp, Pre-finish	2
9	362552	216006	3/8-16 X 1 1/4" SHCS	4
10	413727	832464	Mounting Plate, Cylinder	1
11	413728	832465	Spacer, Pre-finish	2
12	360562	219016	1/2 - 13 x 7" SHCS	2
13	441490	883879	Blow Pin Cylinder, 4" Bore x 3" Stroke w/ Top Adjustment	1
14	413729	832467	Air Adapter, 1/2 - 20 Thread (5/8-18 Thread Available)	1
15	92476	*****	3/8-16 x 3/8" Set Screw w/ Brass Tip	1



## -4 Style Mandrel Adjustment Assembly / Parison Weight Adjustment

Item	Adrian	OEM	Description	Qty.
1	88357	55204	Lock Assembly, Drive Gear	1
2	88351	55203	Drive Gear, 19-Tooth w/ Hex, Bushing, & Set Screw	1
3	88367	55214	Driven Gear, Bronze for 1 3/8 – 16 Mandrel	1
4	362567	216014	3/8–16 x 3 1/2" SHCS	2
5	88359	55207	Mounting Plate, Driven Gear w/ Dowel	1
6	88354	55208	Retainer Plate, Driven Gear	1
7	323553	212002	1/4-20 x 3/4" SHCS	4
8	479533	847022	Spacer, 2 5/8" LG	2

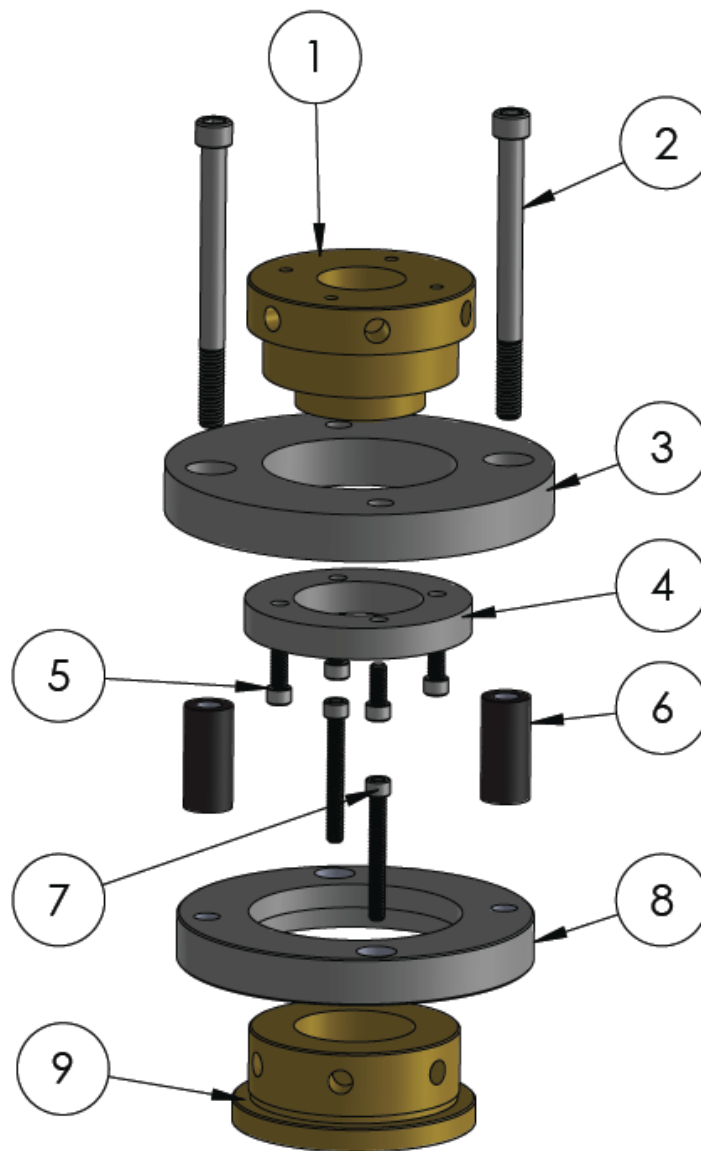


**Note:**

Ref. 3855129 for Complete Assembly as shown

## -1 Style Mandrel Adjustment Assembly / Prison Weight Adjustment

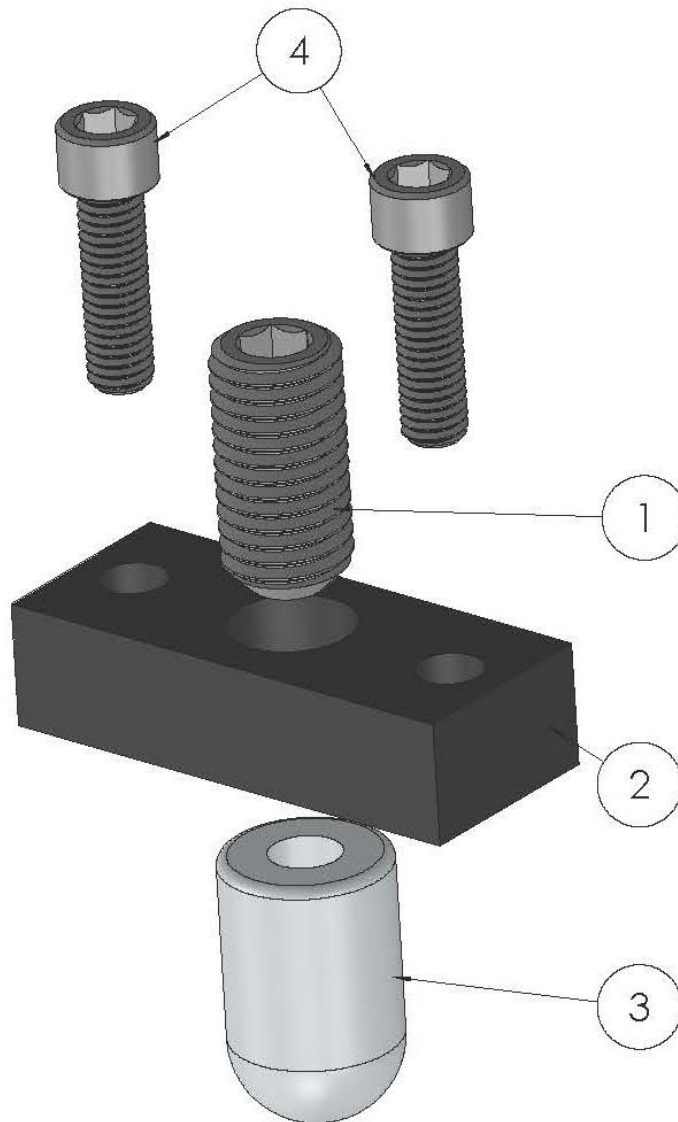
Item	Adrian	OEM	Description	Qty.
1	413799	832477	Mandrel Adjusting Nut	1
2	91544	73088	3/8-16 x 4 1/4" SHCS	2
3	413795	832470	Retaining Plate, Mandrel Adjusting Nut	1
4	413796	832471	Retaining Ring, Mandrel Adjusting Nut	1
5	363550	212009	1/4-20 x 5/8" SHCS	4
6	439170	827349	Spacer, 1 5/8" LG	2
7	362561	216013	3/8-16 x 2" SHCS	2
8	413791	832473	Retainer Plate, Adjusting Nut	1
9	413793	832472	Adjusting Nut, Lower Mandrel Sleeve	1





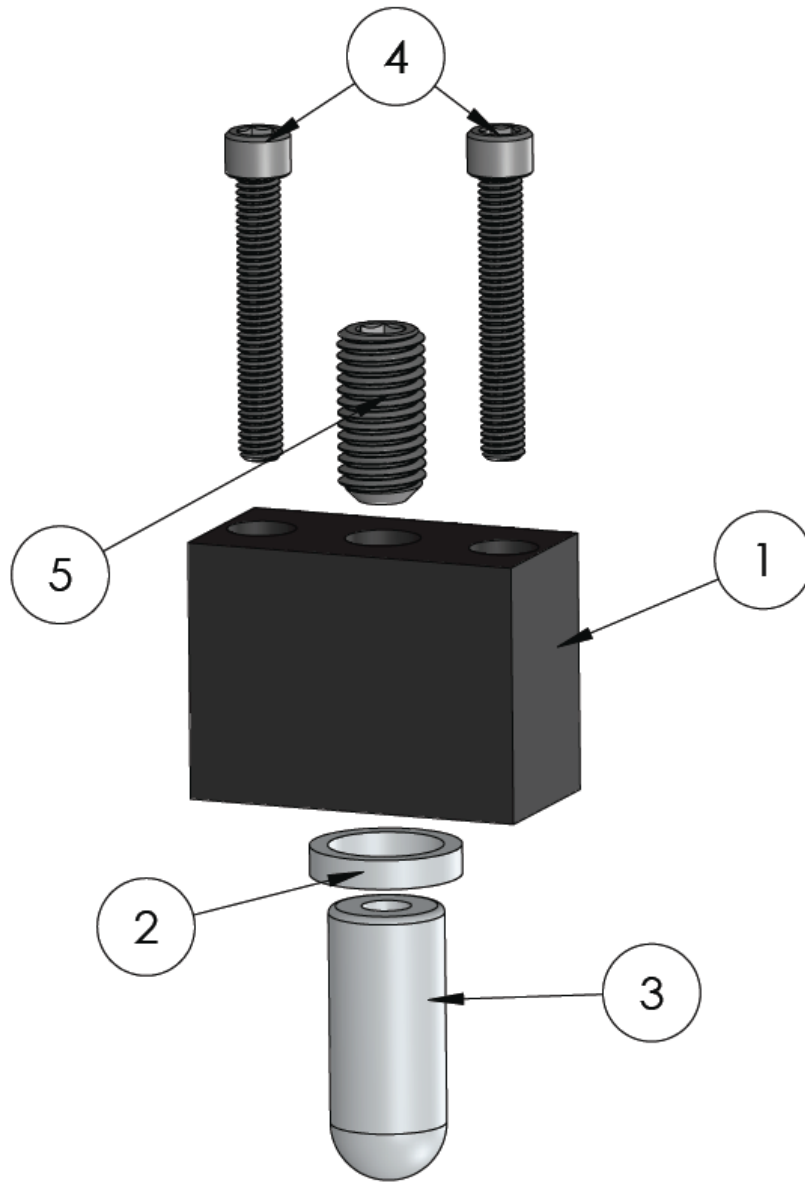
## Choke Screw Assembly for 1" Bore – Traditional

Item	Adrian	OEM	Description	Qty.
1	355124	200368	Adjusting Screw, 3/4-10 x 1 1/2" SHSS with Cup Point	1
2	413369	832217	Choke Screw Plate	1
3	413362	832216	Choke Screw (Bullet)	1
4	362552	216006	3/8 - 16 x 1 1/4" SHCS	2



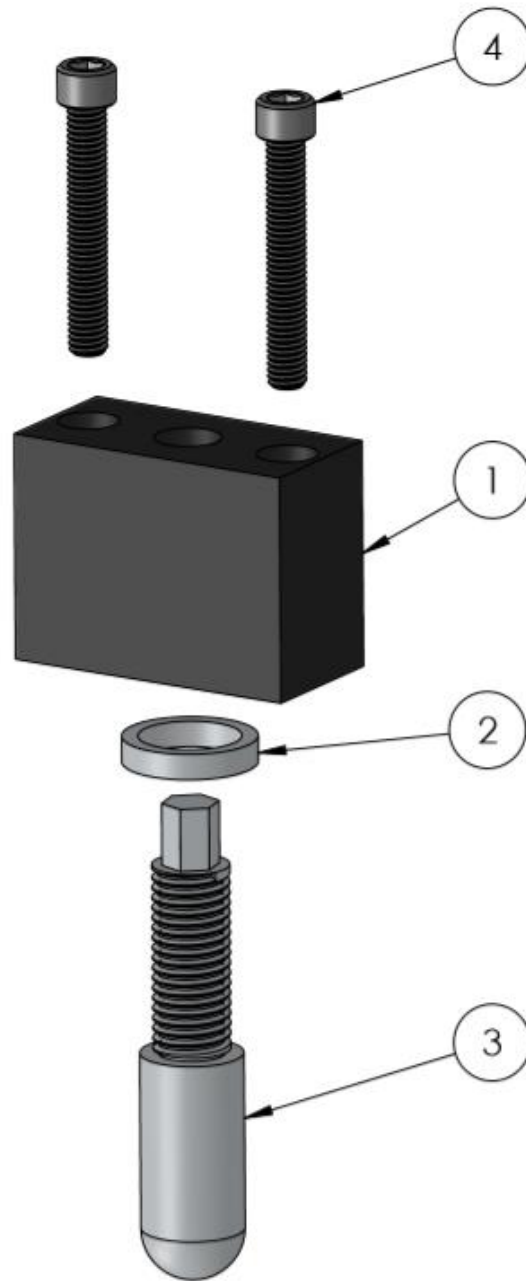
## 90894 Choke Screw Assembly with Seal for 1" Bore

Item	Adrian	OEM	Description	Qty.
1	675938	140725	Choke Screw Plate	1
2	675932-A	140726	Seal, Aluminum	1
3	675939	140727	Choke Screw (Bullet)	1
4	362531	216023	Mounting Bolts, 3/8-16 x 2 1/2" SHCS	2
5	355124	200368	Adjusting Screw, 3/4-10 x 1 1/2"	1



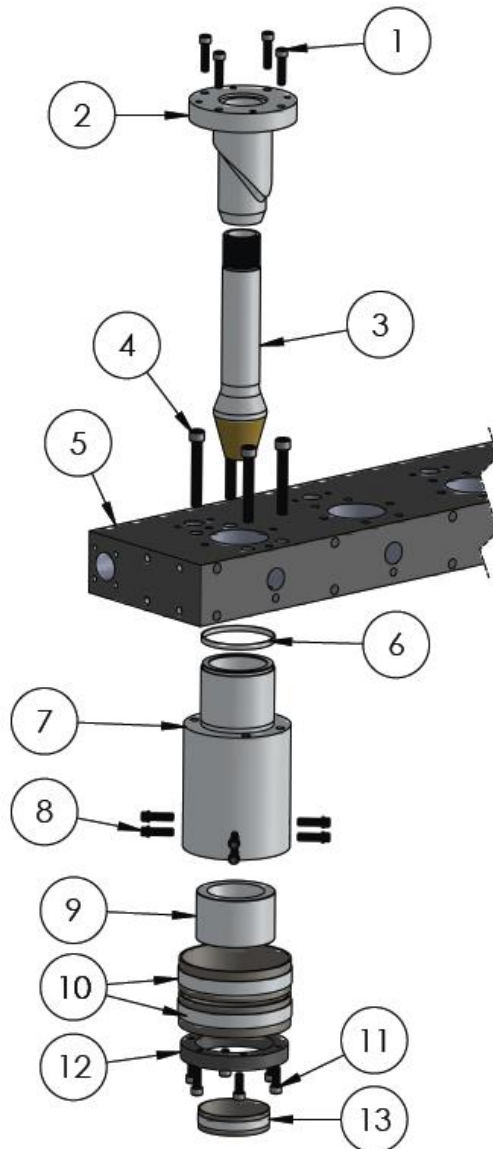
## 90054 Choke Screw Assembly with Seal for 1" Bore

Item	Adrian	OEM	Description	Qty.
1	675938	140725	Choke Screw Plate	1
2	675932-A	140726	Seal, Aluminum	1
3	623396	162271	Choke Screw	1
4	362531	216023	Mounting Bolts, 3/8-16 x 2 1/2" SHCS	2



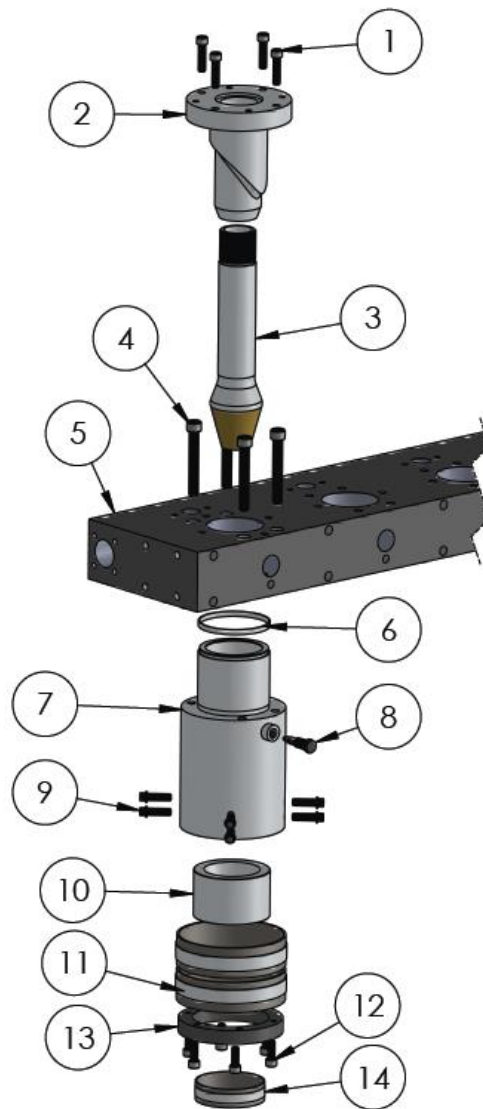
## -1 Style Die Head Assembly

Item	Adrian	OEM	Description	Qty.
1	362556	216001	3/8-16 x 1 1/2" SHCS	4
2	413797	832474	Upper Mandrel Sleeve	1
3	477150	844309	Lower Mandrel Sleeve	1
4	360553	219002	1/2-13 x 3 1/2" SHCS	4
5	*****	*****	Die Block (Determined by Head Configuration)	1
6	477207	844694	Seal Ring, Aluminum	1
7	413794	832478	Feed Throat	1
8	492134	876328	3/8-16 x 1 1/4" Ferry Head Cap Screw w/ Under Cut	8
9	413792	832476	Adjusting Ring (Pressure Ring)	1
10	91064	*****	Heater Band, Feed Throat - 5.5" ID x 2" w/ 24" Lead	2
11	362551	216003	3/8-16 x 1" SHCS	6
12	432539	826027	Clamp Ring (Die Retainer Ring)	1
13	90968	*****	Heater Band, Die Tip - 3.5" ID x 1" w/ 24" Lead	1



## -1 Style Die Head Assembly with Bleed Port

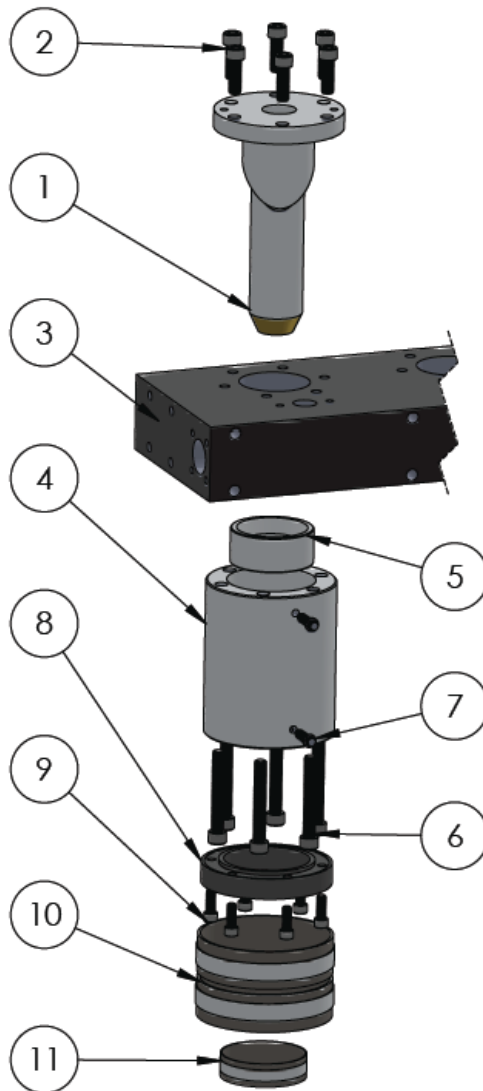
Item	Adrian	OEM	Description	Qty.
1	362556	216001	3/8-16 x 1 1/2" SHCS	4
2	413797	832474	Upper Mandrel Sleeve	1
3	477150	844309	Lower Mandrel Sleeve w/ Brass Tip	1
4	360553	219002	1/2-13 x 3 1/2" SHCS	4
5	TBD	*****	Die Block to be Determined by Head Configuration	1
6	477207	844694	Aluminum Seal Ring	1
7	449151	887303	Feed Throat	1
8	90231	*****	Bleed Screw	1
9	492134	876328	3/8-16 x 1 1/4" Ferry Head Cap Screw w/ Under Cut	8
10	413792	832476	Adjusting Ring (Pressure Ring)	1
11	91064	*****	Feed Throat Heater Band, 5.5" ID x 2" w/ 24" Lead	2
12	362551	216003	3/8 - 16 x 1" SHCS	6
13	432539	826027	Clamp Ring (Die Retainer Ring)	1
14	90968	*****	Die Tip Heater Band, 3.5" ID x 1" w/ 24" Lead	1
15	90778	*****	Mandrel Sleeve, 1Pc (Optional) (Not Shown)	1





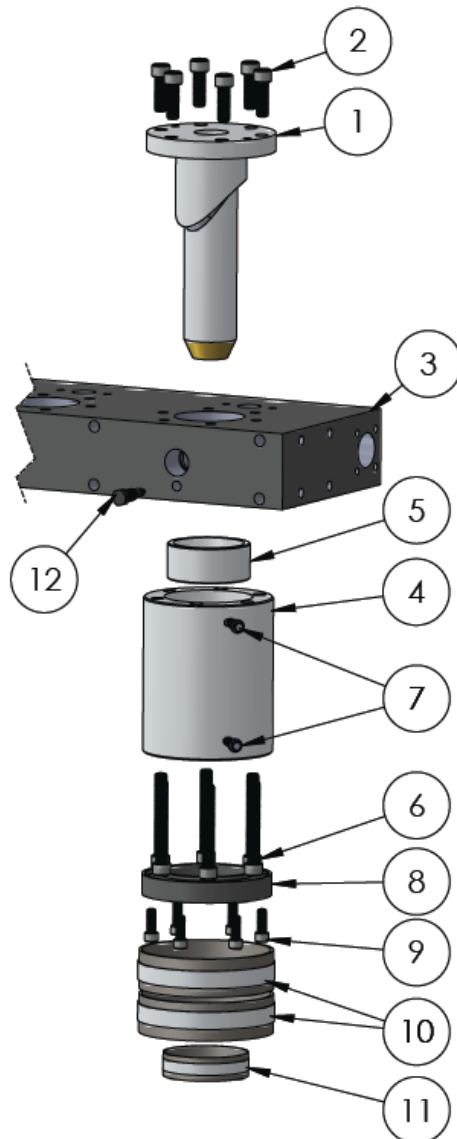
## -4 Style Die Head Assembly

Item	Adrian	OEM	Description	Qty / Cavity
1	492583	876052	Mandrel Sleeve with Bronze Tip (Diverter)	1
2	360551	219003	1/2 – 13 x 1 1/2" SHCS	6
3	*****	*****	Die Block to be determined by Head Configuration	1
4	479569	847017	Feed Throat	1
5	479564	847018	Adjusting Ring (Pressure Ring)	1
6	360553	219002	1/2 – 13 x 3 1/2" SHCS	6
7	492134	876328	3/8–16 x 1 1/4" Ferry Head Cap Screw w/ Under Cut	8
8	432539	826027	Clamp Ring (Die Retainer Ring)	1
9	362551	216003	3/8 – 16 x 1" SHCS	6
10	91064	*****	Feed Throat Heater Band, 5.5" ID x 2" w/ 24" Lead	2
11	90968	*****	Die Tip Heater, 3.5" ID x 1" w/ 24" Lead	1



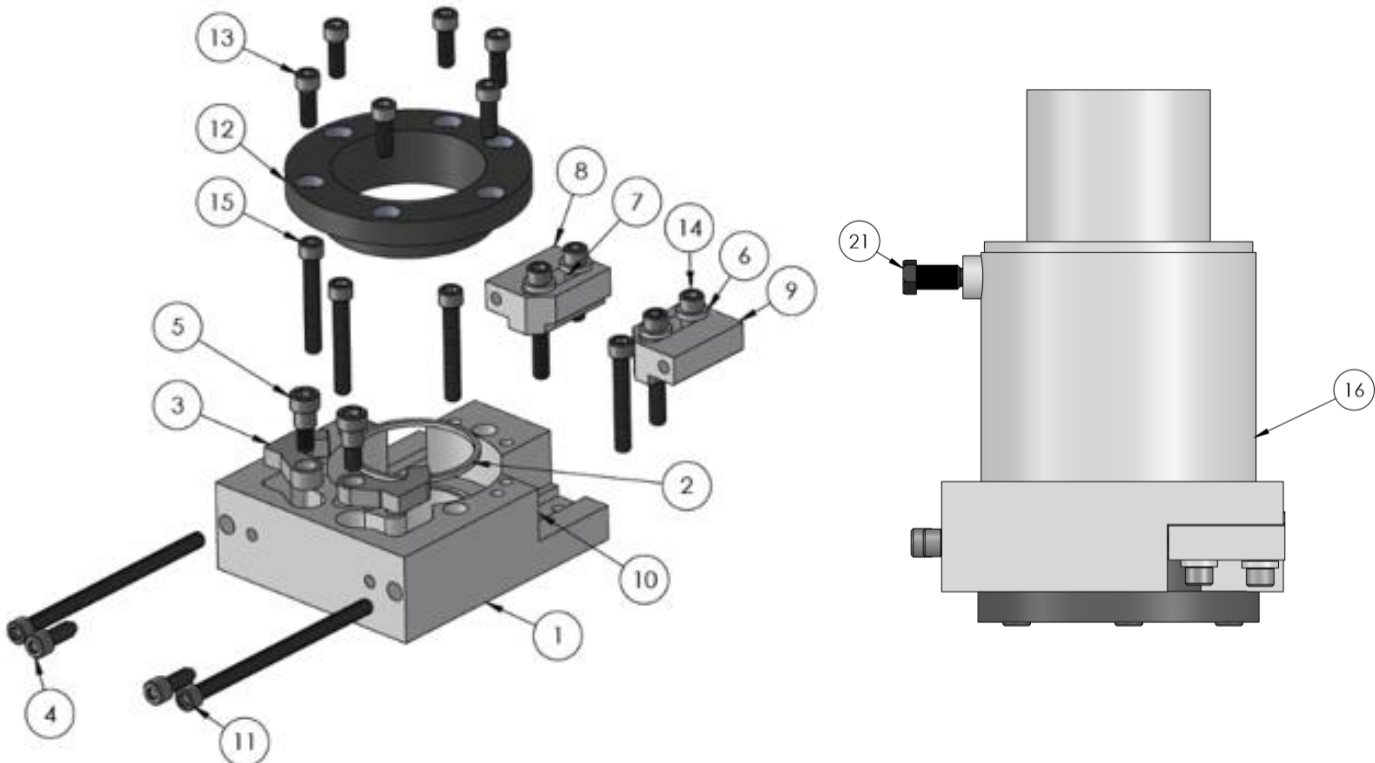
## -4 Style Die Head Assembly with Bleed Port

Item	Adrian	OEM	Description	Qty / Cavity
1	492583	876052	Mandrel Sleeve with Bronze Tip (Diverter)	1
2	360551	219003	1/2-13 x 1 1/2" SHCS	6
3	*****	*****	Die Block to be determined by Head Configuration	1
4	442044	886988	Feed Throat	1
5	479564	847018	Adjusting Ring (Pressure Ring)	1
6	360553	219002	1/2-13 x 3 1/2" SHCS	6
7	492134	876328	3/8-16 x 1 1/4" Ferry Head Cap Screw w/ Under Cut	8
8	432539	826027	Clamp Ring (Die Retainer Ring)	1
9	362551	216003	3/8-16 x 1" SHCS	6
10	91064	*****	Feed Throat Heater Band, 5.5" ID x 2" w/ 24" Lead	2
11	90968	*****	Die Tip Heater, 3.5" ID x 1" w/ 24" Lead	1
12	90231	*****	Bleed Screw	1



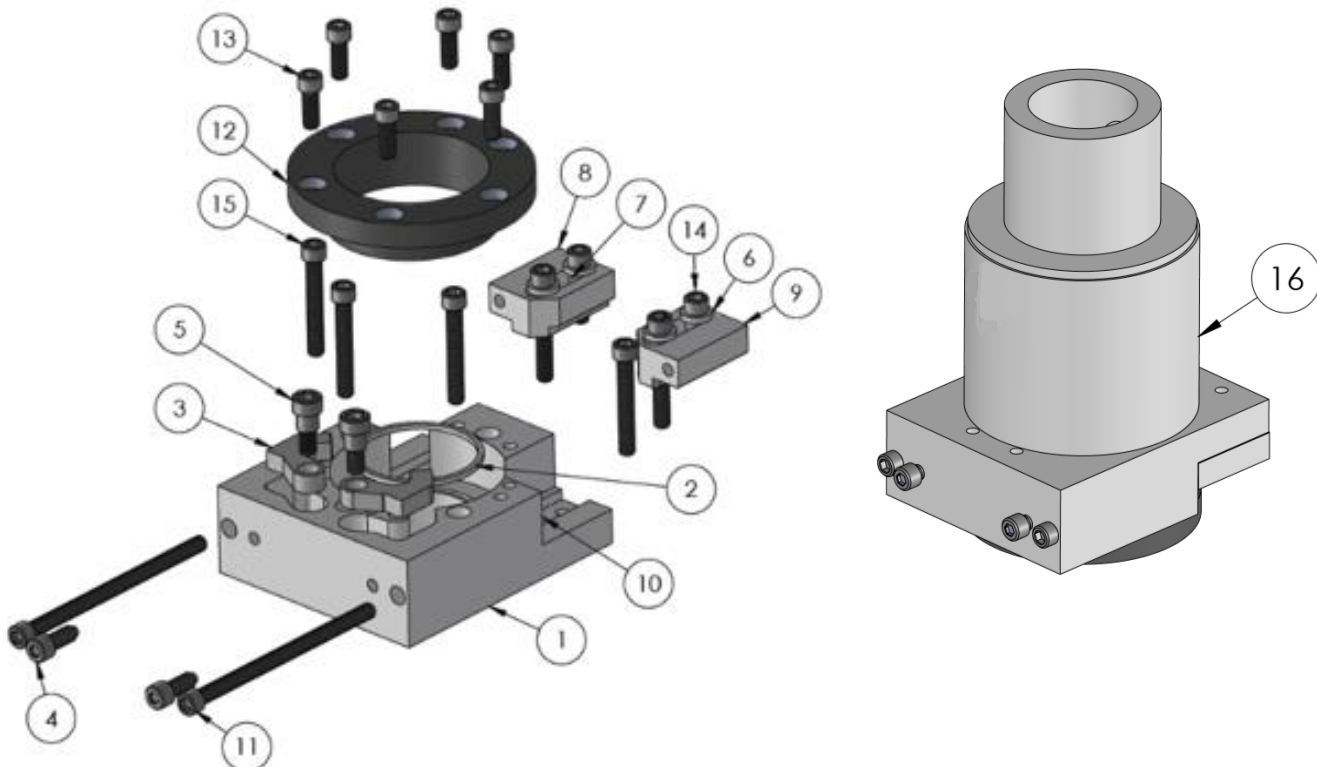
## Front Die Adjustment Assembly, -1 Style Bleed Port PL-91154-B

Item	Adrian	OEM	Description	Qty.
1	674108	148395	Front Flange – Front Adjustment	1
2	637884	124558	Seal Ring	1
3	674102	148396	Cam Front Die Adjust	2
4	674005	*****	Cap Screw Half Dog Point	2
5	90475	*****	Cam Shoulder Bolt	2
6	90279	*****	Hardened Washer 3/8"	4
7	686436	151821	Extrusion Die Sleeve	4
8	674003	148992	Slide Block Right Side	1
9	674006	148991	Slide Block Left Side	1
10	3755083	2400952	Spring Slide Adjust	2
11	90323	*****	3/8-16 x 6" SHCS (Slide Block)	2
12	670570	149049	Die Retainer Ring	1
13	362551	216003	3/8-16 x 1" SHCS (Die Retainer)	6
14	362556	216001	3/8-16 x 1 1/2" SHCS (Slide)	2
15	362531	216023	3/8-16 x 2 1/2" SHCS (Flange)	6
16	91342	*****	Feed Throat, -1 Style W/ Bleed Port	1
17	360553	219002	1/2-13 x 3 1/2" SHCS (Feed Throat/Die)	6
19	91002	*****	Heater Band 1000W/230V Braided Lead (Not Shown)	1
20	91069	*****	Die Tip Heater 250W/120V 5/8" Wide (Not Shown)	1
21	90231	*****	Bleed Screw	1
22	91366	*****	Thermocouple J-Type Adjustable (Not Shown)	1
23	91367	*****	Thermocouple Adapter, 2.5" Long (Not Shown)	1



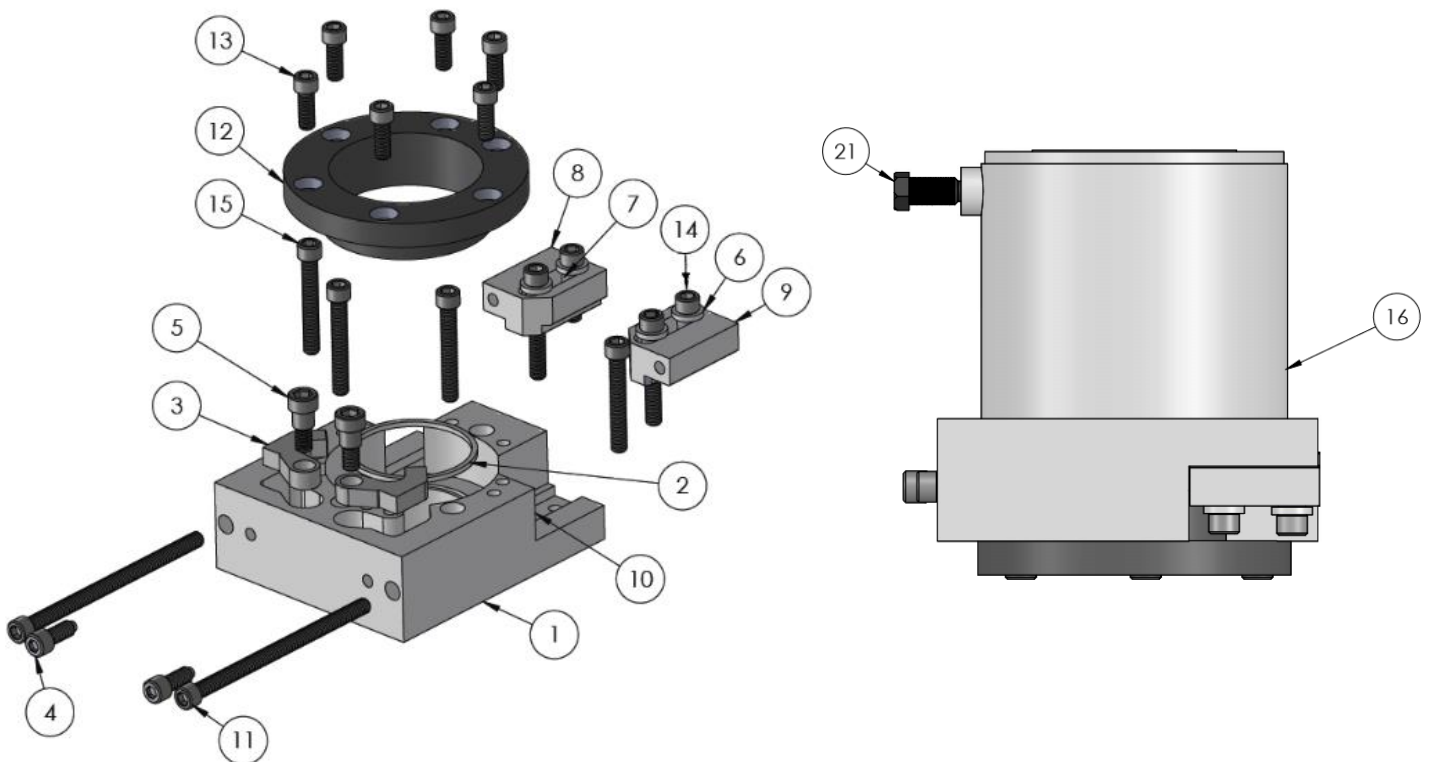
## Front Die Adjustment Assembly, -1 Style Non-Bleed Port PL-91154

Item	Adrian	OEM	Description	Qty.
1	674108	148395	Front Flange – Front Adjustment	1
2	637884	124558	Seal Ring	1
3	674102	148396	Cam Front Die Adjust	2
4	674005	*****	Cap Screw Half Dog Point	2
5	90475	*****	Cam Shoulder Bolt	2
6	90279	*****	Hardened Washer 3/8"	4
7	686436	151821	Extrusion Die Sleeve	4
8	674003	148992	Slide Block Right Side	1
9	674006	148991	Slide Block Left Side	1
10	3755083	2400952	Spring Slide Adjust	2
11	90323	*****	3/8-16 x 6" SHCS (Slide Block)	2
12	670570	149049	Die Retainer Ring	1
13	362551	216003	3/8-16 x 1" SHCS (Die Retainer)	6
14	362556	216001	3/8-16 x 1 1/2" SHCS (Slide)	2
15	362531	216023	3/8-16 x 2 1/2" SHCS (Flange)	6
16	91143	*****	Feed Throat -1 Style	1
17	360553	219002	1/2-13 x 3 1/2" SHCS (Feed Throat/Die) (Not Shown)	6
18	91002	*****	Heater Band 1000W/230V Braided Lead (Not Shown)	1
19	91069	*****	Die Tip Heater 250W/120V 5/8" Wide (Not Shown)	1
20	91366	*****	Thermocouple J-Type Adjustable (Not Shown)	1
21	91367	*****	Thermocouple Adapter, 2.5" Long (Not Shown)	1



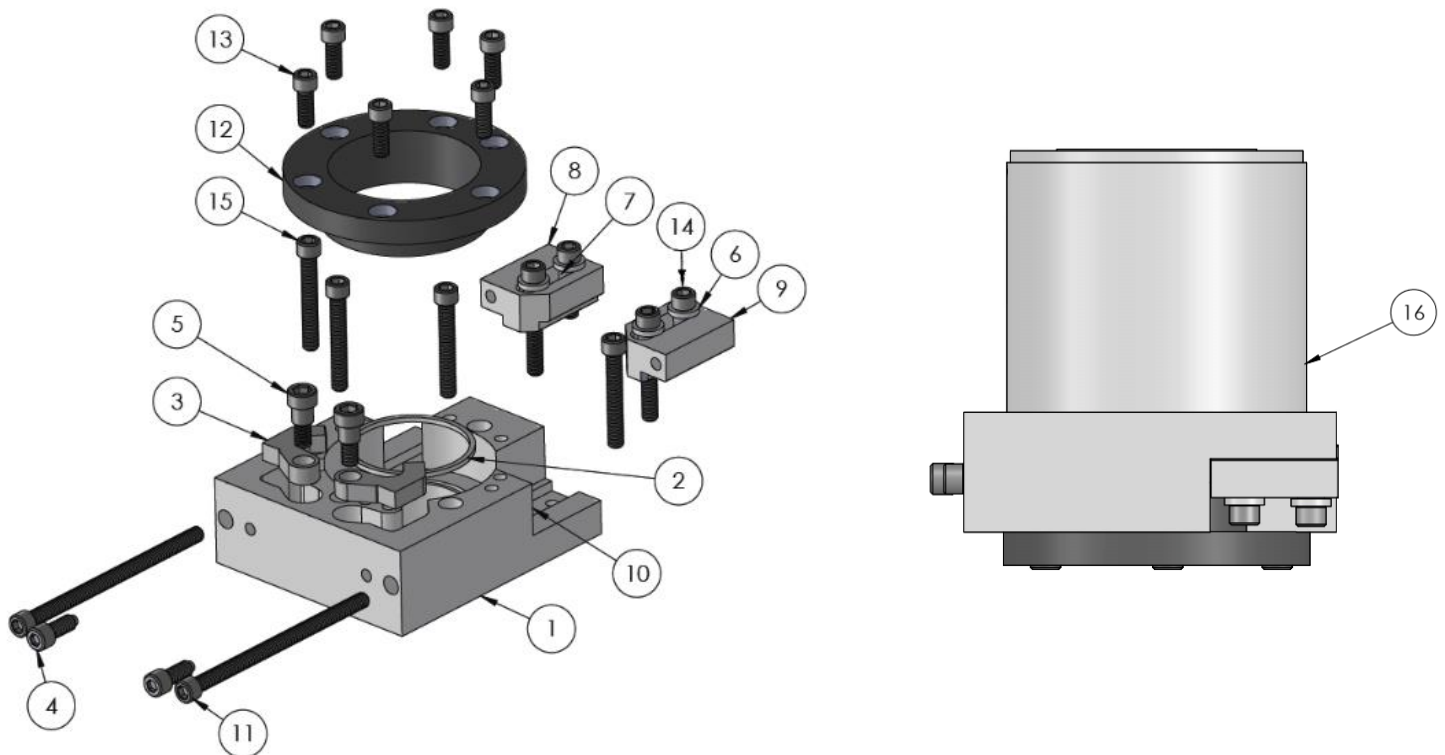
## Front Die Adjustment Assembly, -4 Style Bleed Port PL-91423

Item	Adrian	OEM	Description	Qty.
1	674108	148395	Front Flange – Front Adjustment	1
2	637884	124558	Seal Ring	1
3	674102	148396	Cam Front Die Adjust	2
4	674005	*****	Cap Screw Half Dog Point	2
5	90475	*****	Cam Shoulder Bolt	2
6	90279	*****	Hardened Washer 3/8"	4
7	686436	151821	Extrusion Die Sleeve	4
8	674003	148992	Slide Block Right Side	1
9	674006	148991	Slide Block Left Side	1
10	3755083	2400952	Spring Slide Adjust	2
11	90323	*****	3/8-16 x 6" SHCS (Slide Block)	2
12	670570	149049	Die Retainer Ring	1
13	362551	216003	3/8-16 x 1" SHCS (Die Retainer)	6
14	362556	216001	3/8-16 x 1 1/2" SHCS (Slide)	2
15	362531	216023	3/8-16 x 2 1/2" SHCS (Flange)	6
16	674147	148384	Feed Throat Front Adjust, -4 Style Bleed Port	1
17	360553	219002	1/2-13 x 3 1/2" SHCS (Feed Throat/Die) (Not Shown)	6
18	90224	*****	Diverter, -4 Style Bleed Port (Not Shown)	1
19	91002	*****	Heater Band 1000W/230V Braided Lead (Not Shown)	1
20	91069	*****	Die Tip Heater 250W/120V 5/8" Wide (Not Shown)	1
21	90231	*****	Bleed Screw	1
22	91366	*****	Thermocouple J-Type Adjustable (Not Shown)	1
23	91367	*****	Thermocouple Adapter, 2.5" Long (Not Shown)	1



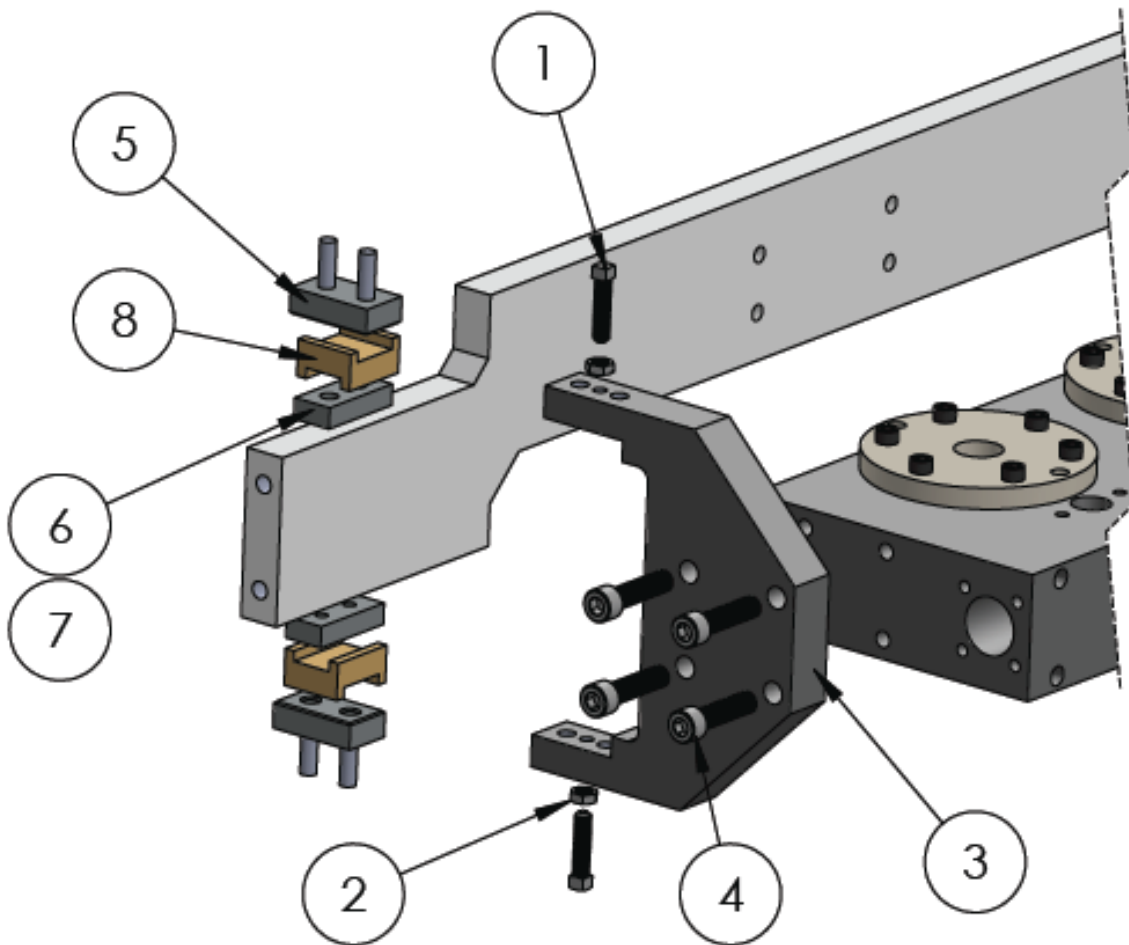
## Front Die Adjustment Assembly, -4 Style Non-Bleed Port PL-90440

Item	Adrian	OEM	Description	Qty.
1	674108	148395	Front Flange – Front Adjustment	1
2	637884	124558	Seal Ring	1
3	674102	148396	Cam Front Die Adjust	2
4	674005	*****	Cap Screw Half Dog Point	2
5	90475	*****	Cam Shoulder Bolt	2
6	90279	*****	Hardened Washer 3/8"	4
7	686436	151821	Extrusion Die Sleeve	4
8	674003	148992	Slide Block Right Side	1
9	674006	148991	Slide Block Left Side	1
10	3755083	2400952	Spring Slide Adjust	2
11	90323	*****	3/8-16 x 6" SHCS (Slide Block)	2
12	670570	149049	Die Retainer Ring	1
13	362551	216003	3/8-16 x 1" SHCS (Die Retainer)	6
14	362556	216001	3/8-16 x 1 1/2" SHCS (Slide)	2
15	362531	216023	3/8-16 x 2 1/2" SHCS (Flange)	6
16	674147	148384	Feed Throat Front Adjust, -4 Style Bleed Port	1
17	360553	219002	1/2-13 x 3 1/2" SHCS (Feed Throat/Die) (Not Shown)	6
19	91002	*****	Heater Band 1000W/230V Braided Lead (Not Shown)	1
20	91069	*****	Die Tip Heater 250W/120V 5/8" Wide (Not Shown)	1
21	91366	*****	Thermocouple J-Type Adjustable (Not Shown)	1
22	91367	*****	Thermocouple Adapter, 2.5" Long (Not Shown)	1



## Sliding Head Support Fork Assembly PL-90442

Item	Adrian	OEM	Description	Qty.
1	358536	205021	Square Head Set Screw 3/8-16 x 1 1/2"	4
2	138564	325018	Hex Jam Nut 3/8 – 16	4
3	638492	125876	Support Fork	2
4	360559	219007	1/2 – 13 x 2" Socket Head Cap Screw	8
5	632125	126360	Rail Fork with Dowels	4
6	323553	112002	1/4 – 20 x 3/4" Socket Head Cap Screw	8
7	638494	125878	Rail Fork	4
8	638499	125877	Shoe, Die Block Fork	4



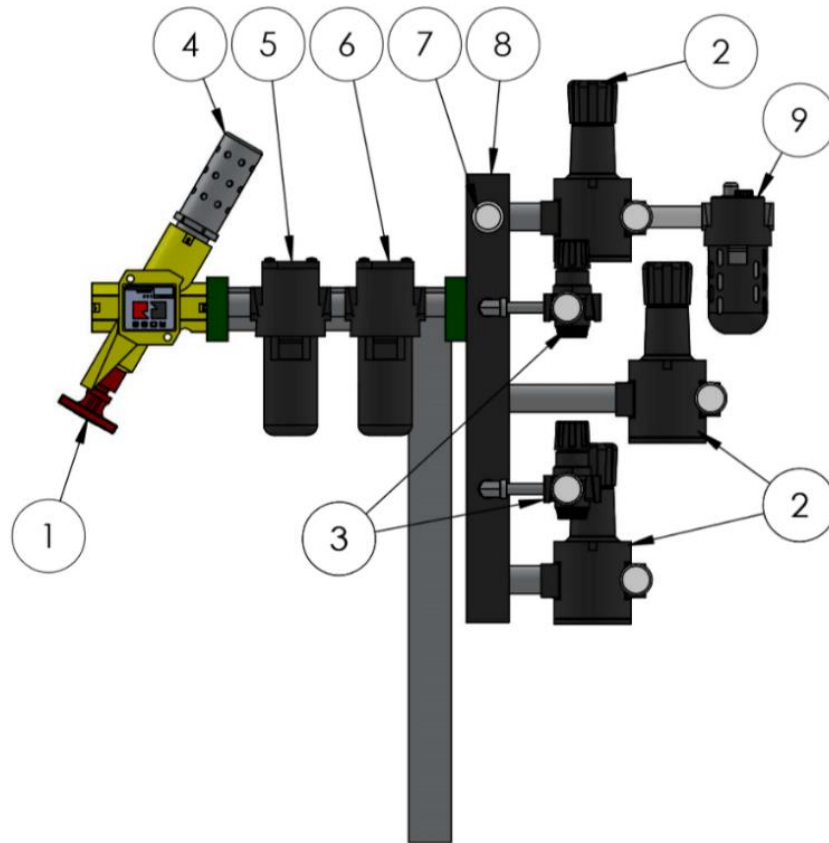
**The above assembly is designed for straight forks & 4" wide cross members.  
Requires drilling & tapping (8) 1/4-20 holes in existing cross member.**



## PL-91162 - Filter & Regulator Manifold Assembly "Make-Up Air"

Item	Adrian	Description	Qty.
1	91712	Emergency Shut Off Valve	1
2	91713	Regulator with Gauge – 1" NPT	3
3	91714	Regulator with Gauge – 1/4" NPT	2
4	91715	High Flow Pneumatic Silencer	1
5	91716	Air Filter - .05 Micron	1
6	91717	Air Filter - .03 Micron	1
7	91718	Pressure Gauge	1
8	90944	Manifold Block	1
9	91772	Oiler with Sight Glass	1

Surge Tank Assembly			
10	PL-91689	20-GAL Surge Tank (Not Shown)	1

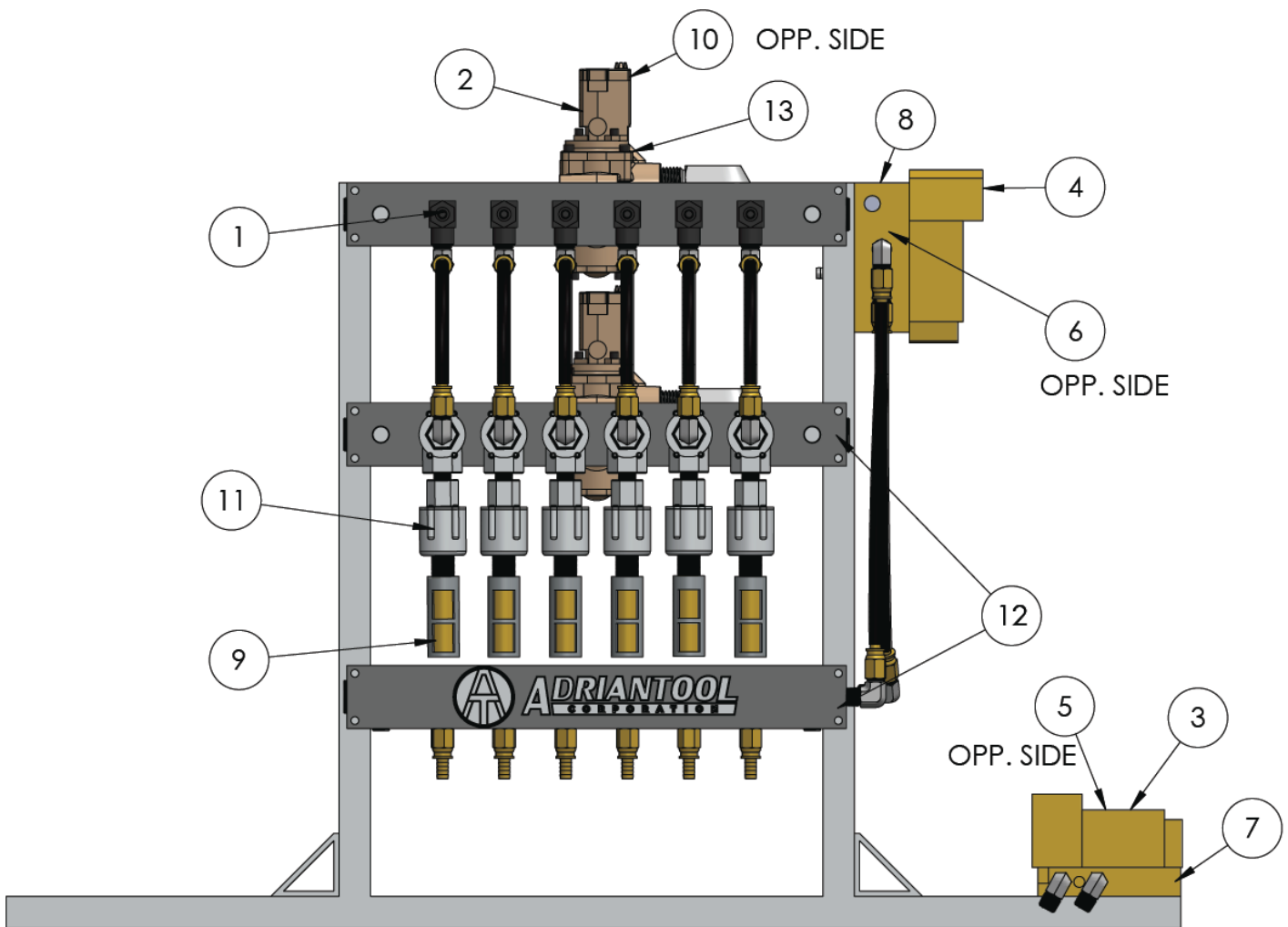


### **Recommended Make-Up Air System Settings**

SYSTEM PRESSURE	80 – 100 PSI
STRIPPER PRESSURE	50 – 60 PSI
DOOR AIR SAFETY PRESSURE	35 – 45 PSI
BLOW PIN CYLINDER PRESSURE	65 PSI
PRE-BLOW PRESSURE	40 – 60 PSI
BLOW PRESSURE	80 – 100 PSI

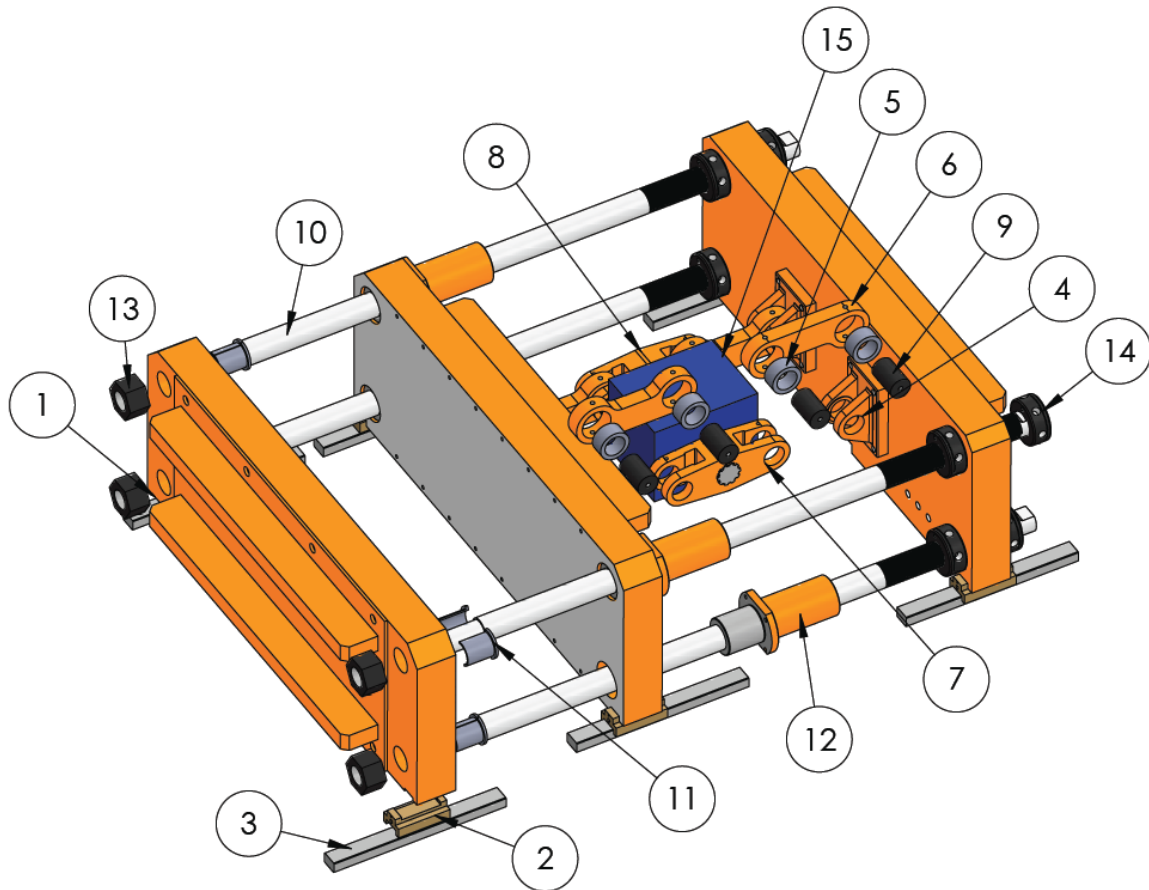
## High-Flow Air System with Quick Exhaust Assembly

Item	Adrian	Description	Qty.
1	91732	Flow Control Valve	6
2	91496	Poppet Valve	2
3	91733	Solenoid Valve (Stripper Assembly)	1
4	91734	Solenoid Valve (Pre-Finish)	1
5	91715	Muffler 3/8" NPT	2
6	91735	Muffler 3/4" NPT	2
7	91736	Solenoid Valve Base (Stripper Assembly)	1
8	91737	Solenoid Valve Base (Pre-Finish)	1
9	92140	Ultra Quiet Silencer	6
10	91044	Exhaust Muffler 1 1/2" NPT	2
11	92139	Quick Exhaust Valve – High Flow Valve	12
12	TBD	Manifold Block	4
13	91740	Bronze Exhaust Muffler	6



## 15x34 Clamp Single Rotac - Clamp Layout

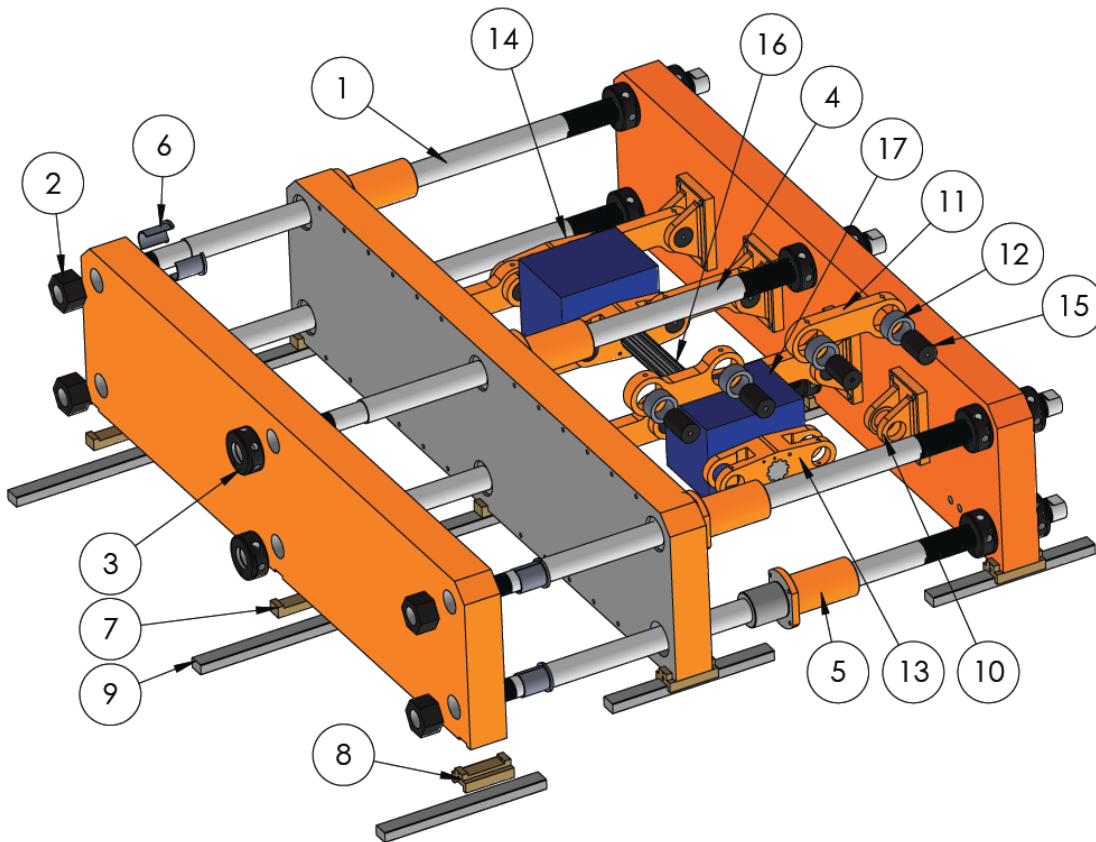
Item	Adrian	OEM	Description	Qty.
1	430707	829494	Platen Shoe	3
2	490778	879445	Platen Shoe, Guided	3
3	431933	823722	Platen Rail	6
4	476326	841261	Clevis	4
5	268532	615026	Toggle Bearing	8
6	476323	841262	Toggle Link	4
7	476380	841259	Rotac Adapter Arm, RH	1
8	476325	841260	Rotac Adapter Arm, LH	1
9	476321	841263	Toggle Pin	8
10	443079	882947	Tie Bar, 2"	4
11	476338	841225	Split Bushing	4
12	416146	831381	Tie Bar Bushing Retainer Assembly, 2"	4
13	135590	320079	Nylock Hex Nut	4
14	443074	882948	Tie Bar Nut, 2" Rear Adjusting	8
15	438562	825016	Clamp Rotac, MPJ-63-2V OIL	1
16	PL-90642	*****	Fastener & Grease Fitting Kit (Not Shown)	1
17	91098	*****	Spanner Wrench 2" (Not Shown)	1



**Note: Platen Reconditioning through our Core Exchange Program is available**

## 15x27 Dbl Light Duty - Clamp Layout

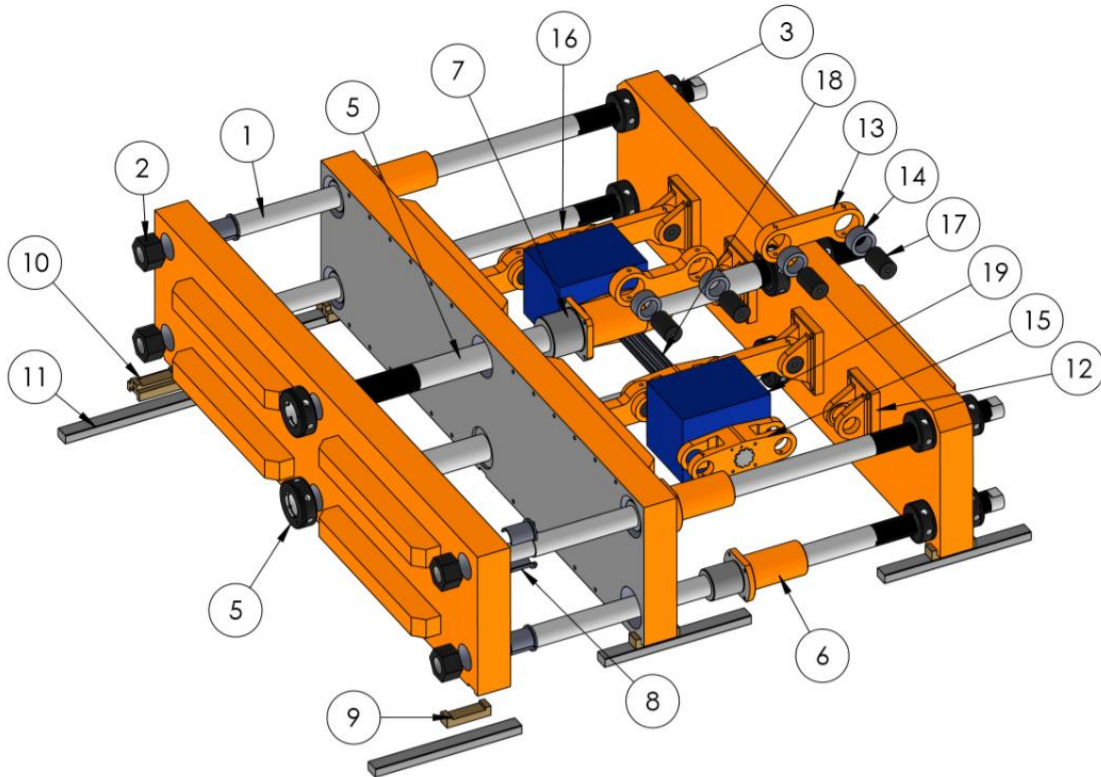
Item	Adrian	OEM	Description	Qty.
1	443079	882947	Tie Bar, 2"	4
2	135590	320079	Nylock Hex Nut	4
3	443074	882948	Tie Bar Nut, 2" – Rear Adjusting	14
4	443072	882946	Tie Bar 2" - Center	2
5	416146	831381	Tie Bar Bushing Retainer Assembly, 2"	6
6	476338	841225	Split Bushing	4
7	430707	829494	Platen Shoe	6
8	490778	879445	Platen Shoe, Guided	3
9	431933	823722	Platen Rail	9
10	476326	841261	Clevis	8
11	476323	841262	Toggle Link	8
12	268532	615026	Toggle Bearing	16
13	476380	841259	Rotac Adapter Arm, RH	1
14	476325	841260	Rotac Adapter Arm, LH	1
15	476321	841263	Toggle Pin	16
16	476479	841847	Center Rotac Adapter	1
17	438562	825016	Clamp Rotac, MPJ-63-2V OIL	2
18	PL-90636	*****	Fastener & Grease Fitting Kit (Not Shown)	1
19	91098	*****	Spanner Wrench 2" (Not Shown)	1



**Note: Platen Reconditioning through our Core Exchange Program is available**

## 15x27 Dbl "Medium" Duty - Clamp Layout

Item	Adrian	OEM	Description	Qty.
1	443079	882947	Tie Bar, 2"	4
2	135590	320079	Nylock Hex Nut	4
3	443074	882948	Tie Bar Nut, 2" Calibrated – Rear Adjusting	8
4	490811	879533	Tie Bar Nut, 2.5" Calibrated – Rear Adjusting	6
5	443078	882945	Tie Bar, 2.5"	2
6	90973	*****	Tie Bar Bushing Retainer Assembly, 2"	4
7	496539	871027	Tie Bar Bushing Retainer Assembly, 2.5"	2
8	476338	841225	Split Bushing	4
9	430707	829494	Platen Shoe	6
10	490778	879445	Platen Shoe, Guided	3
11	431933	823722	Platen Rail	9
12	476326	841261	Clevis	8
13	476323	841262	Toggle Link	8
14	268532	615026	Toggle Bearing	16
15	476380	841259	Rotac Adapter Arm, RH	1
16	476325	841260	Rotac Adapter Arm, LH	1
17	476321	841263	Toggle Pin	16
18	476479	841847	Center Rotac Adapter	1
19	438562	825016	Clamp Rotac, MPJ-63-2V Oil	2
20	PL-90636	*****	Fastener & Grease Fitting Kit (Not Shown)	1
21	91098	*****	2" Spanner Wrench (Not Shown)	1
22	91068	*****	2.5" Spanner Wrench (Not Shown)	1

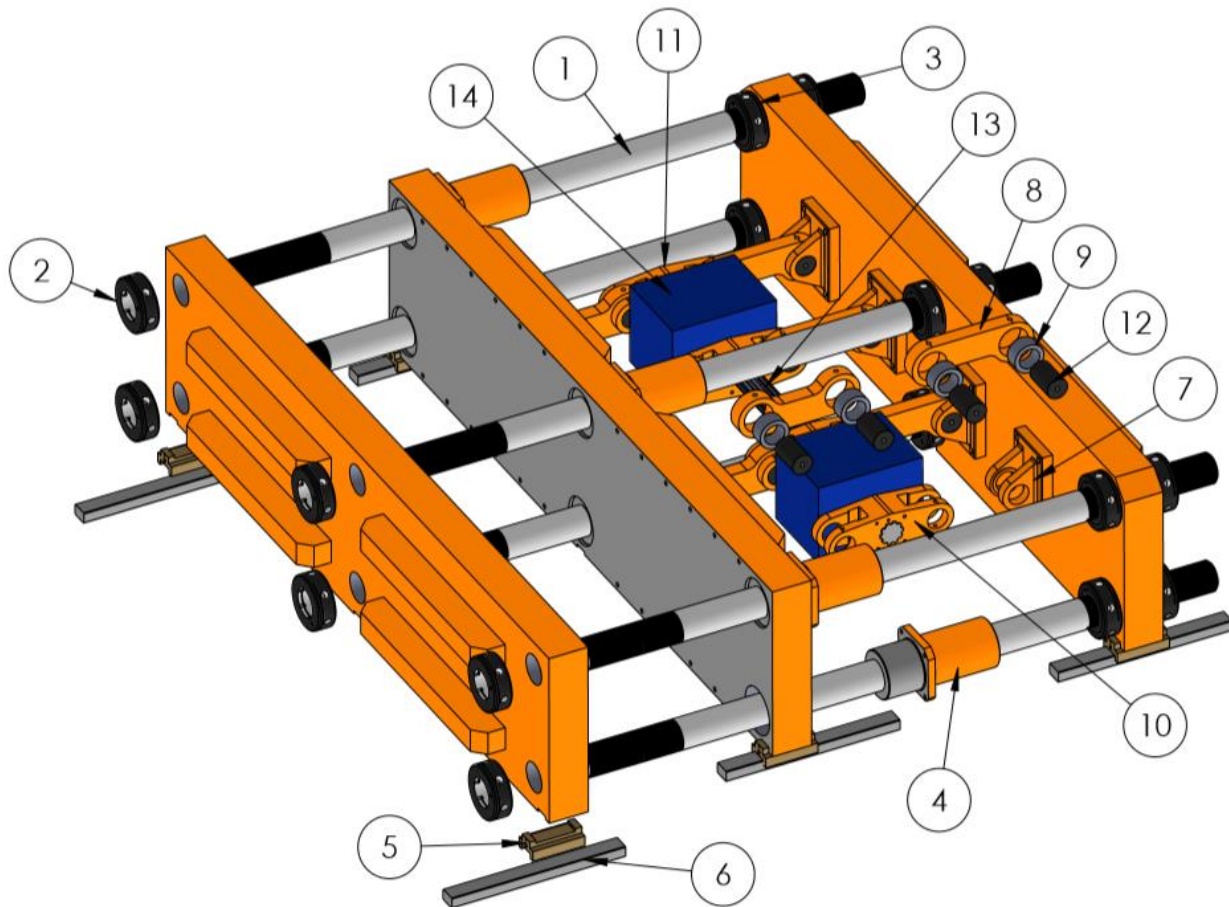


**Note: Platen Reconditioning through our Core Exchange Program is available**



## 15x28.5 Dbl Heavy Duty - Clamp Layout

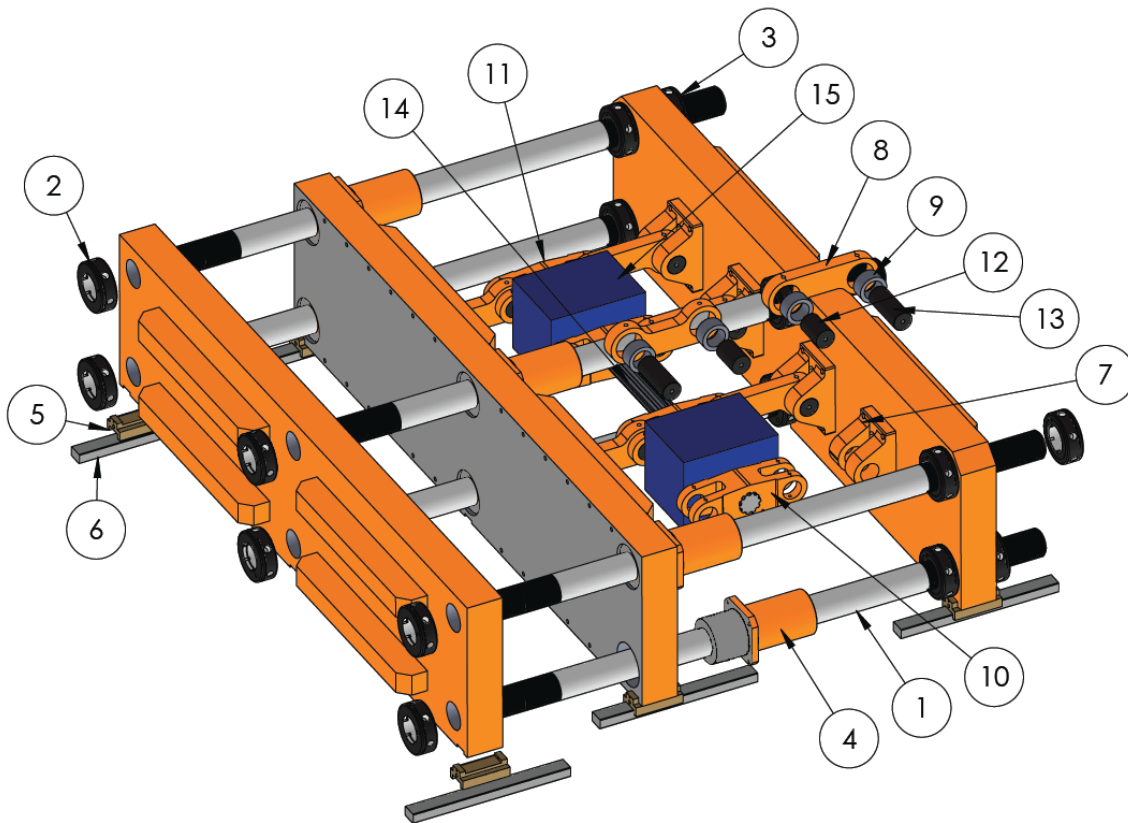
Item	Adrian	OEM	Description	Qty.
1	443078	882945	Tie Bar, 2.5"	6
2	448507	885094	Tie Bar Nut with Mounting Holes, 2.5"	4
3	490811	879533	Tie Bar Nut, 2.5" -Rear Adjusting	14
4	496539	871027	Tie Bar Bushing Retainer Assembly, 2.5"	6
5	496560	871019	Platen Shoe	6
6	494409	878897	Platen Rail	6
7	476326	841261	Clevis	8
8	476323	841262	Toggle Link	8
9	268532	615026	Toggle Bearing	16
10	476380	841259	Rotac Adapter Arm, RH	1
11	476325	841260	Rotac Adapter Arm, LH	1
12	476321	841263	Toggle Pin	16
13	497458	874805	Center Rotac Adapter (Not Shown)	1
14	438562	825016	Clamp Rotac, MPJ-63-2V Oil	2
15	PL-90640	*****	Fastener & Grease Fitting Kit (Not Shown)	1
16	91068	*****	Spanner Wrench 2.5" (Not Shown)	1



**Note: Platen Reconditioning through our Core Exchange Program is available**

## 15x28.5 Dbl Maximum Duty - Clamp Layout

Item	Adrian	OEM	Description	Qty.
1	443078	882945	Tie Bar, 2.5"	6
2	448507	885094	Tie Bar Nut with Mounting Holes, 2.5"	4
3	490811	879533	Tie Bar Nut, 2.5" Calibrated Rear Adjusting	14
4	91017	*****	Sealed Tie Bar Bushing Retainer Assembly, 2.5"	6
5	496560	871019	Platen Shoe	6
6	494409	878897	Platen Rail	6
7	91035	*****	Heavy Duty Clevis / Max Duty	8
8	476323	841262	Toggle Link	8
9	268532	615026	Toggle Bearing	16
10	91034	*****	Heavy Duty Rotac Adapter Arm, RH / Max Duty	1
11	91033	*****	Heavy Duty Rotac Adapter Arm, LH / Max Duty	1
12	91036	*****	Heavy Duty Rotac Adaptor Pin / Max Duty	8
13	91037	*****	Heavy Duty Toggle Pin (FFW)	8
14	497458	874805	Center Rotac Adapter	1
15	438562	825016	Clamp Rotac, MPJ-63-2V OIL	2
16	PL-90640	*****	Fastener & Grease Fitting Kit (Not Shown)	1
17	91068	*****	Spanner Wrench 2.5" (Not Shown)	1
18	PL-92032	*****	Max-Duty Limit Switch Bracket (Not Shown)	1



**Note: Platen Reconditioning through our Core Exchange Program is available**

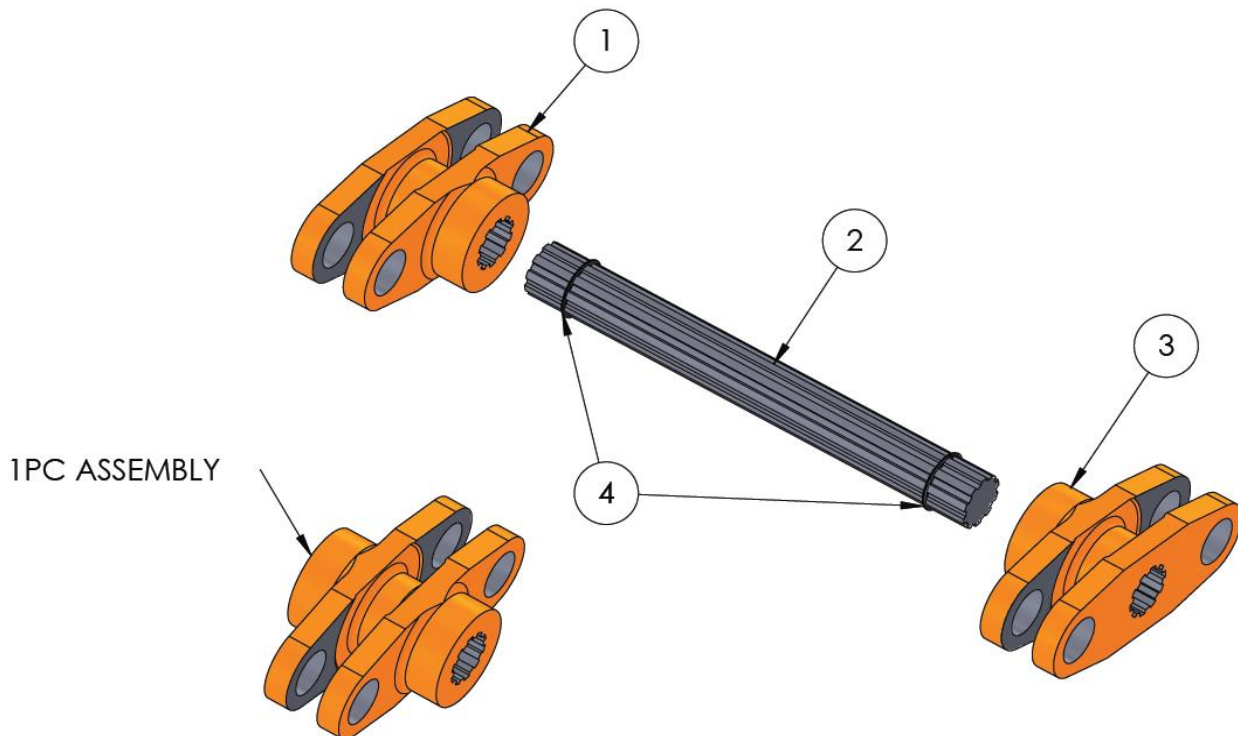


## Center Rotac Adapter Assembly

Item	Adrian	Description	Qty.
1	497458-3	LH Arm, Center Adapter	1
2	TBD	Center Shaft	1
3	497458-2	RH Arm, Center Adapter	1
4	795571	Snap Ring	2

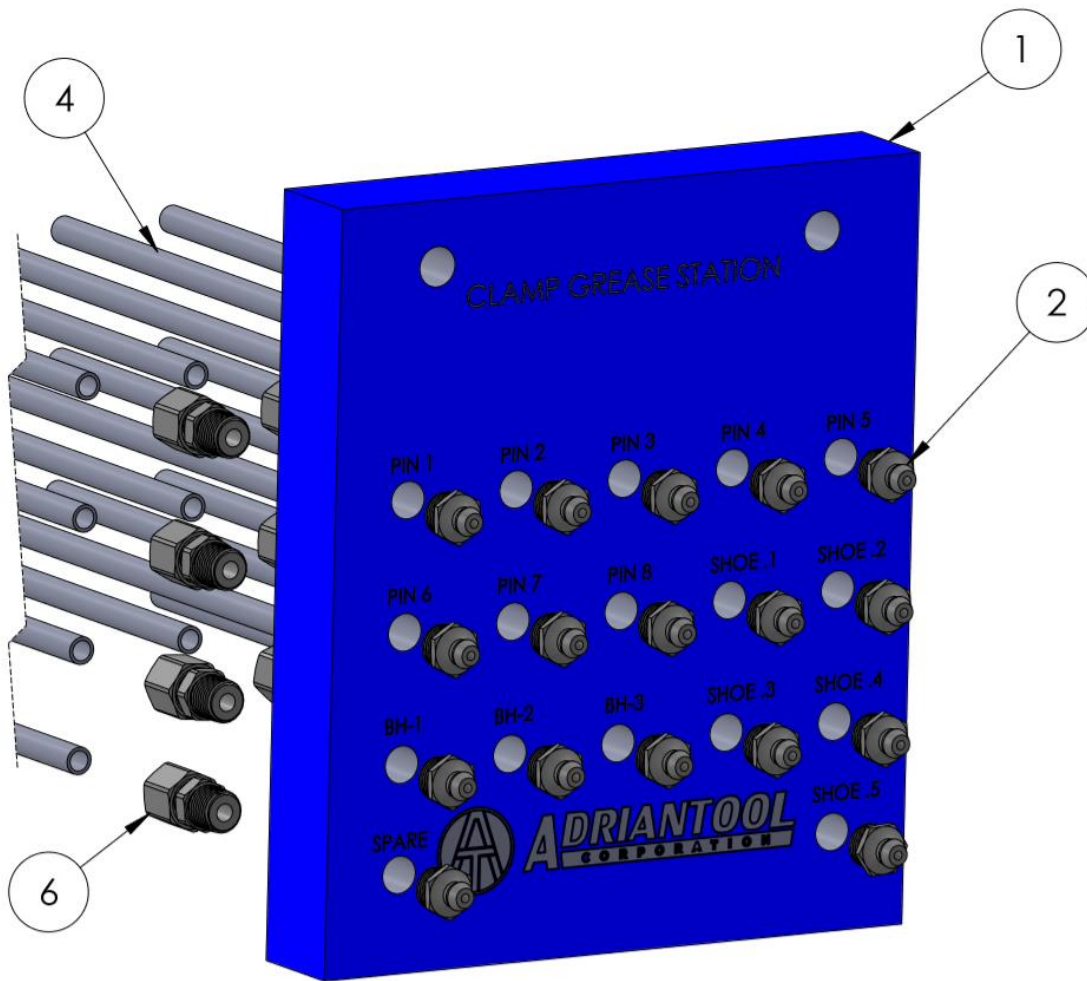
Adrian	OEM	Model 350R2 – R5 & 400R11 – R25 Series Clamps
476479	841847	15 x 27 DBL Clamp Assembly
497458	874805	15 x 28.5 Dbl Clamp Assembly
661777	113444	15 x 36 & 21 x 36 Dbl Clamp Assembly
476871	841543	15 x 44 & 21 x 48 Clamp Assembly (1 Pc. Design Only)

Adrian	OEM	Model UR and R2000 Series Clamps
679747	147484	UR & R2000 Series 15 x 28.5 Dbl Clamp Assembly
616961	131713	UR & R2000 Series 15 x 36 & 21 x 36 Dbl Clamp Assembly
91951	*****	15 x 44 & 21 x 48 Clamp Assembly



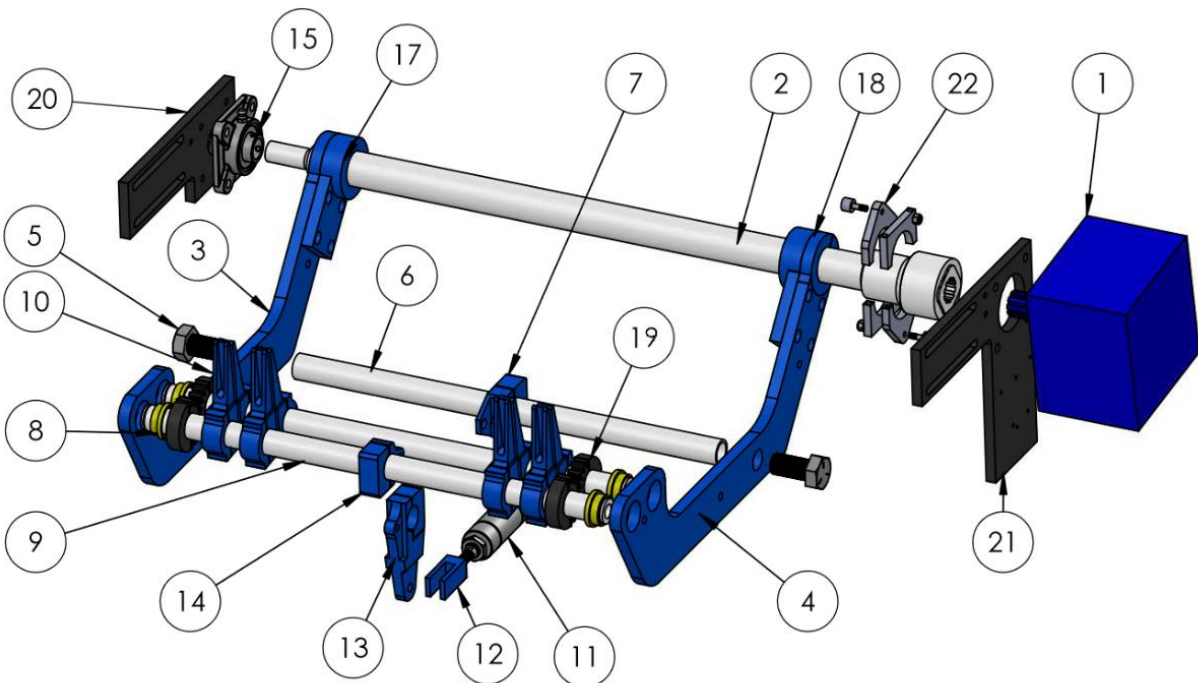
## Manual Clamp Grease Station

Item	Adrian	OEM	Description	Qty.
1	90801	*****	Grease Manifold / DBL Clamp	2
2	6255565	*****	1/8 Straight Zerk W/ Ferrell End	34
3	367559	*****	5/16-18 X 1-1/4 SHCS	4
4	92054	*****	Grease Tube, .25 OD X .125 ID	*
5	92082	*****	1/8" MNPT X 1/4" OD Tube Elbow	28
6	92083	*****	1/8" MNPY X 1/4" O.D. Tube Straight	40
7	91819	*****	Washer, Lock, 5/16"	4



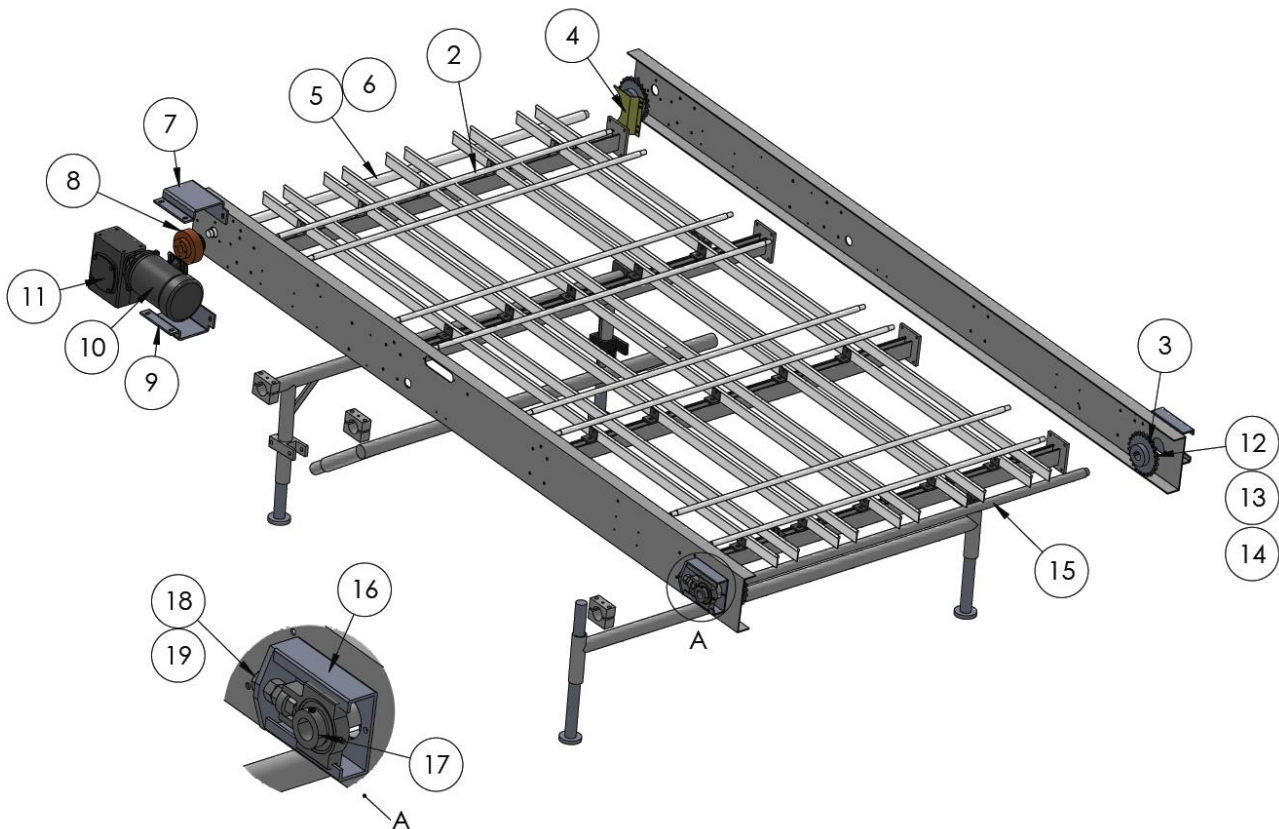
## Aluminum Swing Arm Assembly

Item	Adrian	OEM	Description	Qty.
1	6395561	1270013	Swing Arm Rotac, MPJ-34-2V (Heavy Duty)	1
2	TBD	*****	Swing Arm Shaft (To be Determined by Length)	1
3	90360	*****	Swing Arm Assembly, RH	1
4	90352	TBD	Swing Arm Assembly, LH	1
5	375556	240001	1-14 x 1 1/2 Hex Head Bolt	2
6	TBD	*****	Spreader Shaft	1
7	471889-2	843557	Cylinder Mounting Bracket, 2pc Aluminum	1
8	471880	843559	Bushing	4
9	TBD	*****	Finger Shaft	2
10	446932	881726	Aluminum Finger, 4 pcs / Mold	4
11	6365551	1210003	Flairline Cylinder, 1.5" Bore x 1" Stroke	1
12	6368553	1215002	Rod Clevis & Pin Assembly	1
13	471821-2	843563	Actuating Bracket, 2pc Aluminum	1
14	471827-2	843564	Pivot Bracket, 2pc Aluminum	1
15	295558	670005	Flange Bearing	1
16	795575	470040	Snap Ring 1 1/4" (Not Shown)	4
17	90351	*****	Swing Arm Fitting End, RH (Included with 90360)	1
18	90359	*****	Swing Arm Fitting End, LH (Included with 90352)	1
19	91223	*****	Gears - Finger Shaft	4
20	473292	842676	Bearing Plate	1
21	473243	842686	Rotac Mounting Plate	1
22	90418	*****	Limit Switch Bracket (Req. (2) 91627 Spacers)	2
23	91785	*****	Rotary Potentiometer (Not Shown)	1
24	654178	108345	Coupler, Rotary Potentiometer (Not Shown)	1



## Cooling Bed Assembly / Standard 8' Length

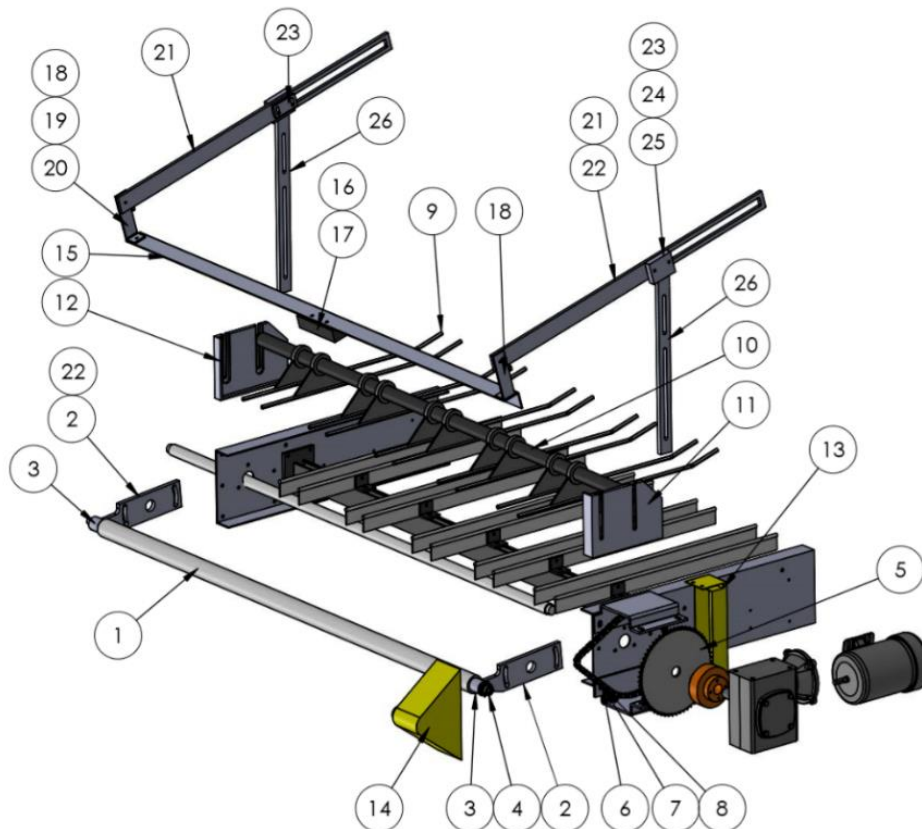
Item	Adrian	OEM	Description	Qty.
1	295511	670033	Flange Bearing	2
2	TBD	*****	Pusher Rod (Based on Cooling Bed Width)	*
3	472740	846489	Sprocket w/ 1.25" Bore & Keyway, 2052B17	4
4	635623	120162	Sprocket Guard	4
5	3956989	2701757	Key for Drive & Idler Shaft	4
6	TBD	*****	Drive Shaft (Based on Cooling Bed Width)	1
7	472701	846493	Gearbox Bracket, Upper	1
8	775551	440003	Dalton Clutch w/ 1" Bore	1
9	472707	846494	Gearbox Bracket, Lower	1
10	3555598	2000075	Motor – 1/3 HP, 1725 RPM, 3PH / 60HZ	1
11	738514	425038	Gear Reducer	1
12	765656	410101	Roller Chain, 2052 (10' per Box)	4
13	765671	410143	Master Link, 2052	2
14	765677	410144	Offset Link, 2052	2
15	TBD	*****	Idler Shaft (Based on Cooling Bed Width)	1
16	413344	832288	Take-up Frame	2
17	295554	670008	Take-up Bearing	2
18	3950277	2709644	Threaded Rod, 3/4-10 x 4" Long	2
19	138530	325029	Hex Jam Nut, 3/4 – 10	8
20	478493	845872	Sprocket w/ 3.5" Bore, 40A60 (Not Shown)	1
21	765558	410005	Sprocket, 409 5/8 (Not Shown)	1
22	765555	410000	Roller Chain, 40 (10' per box (Not Shown))	1
23	765618	410135	Master Link, 40 (Not Shown)	1
24	765612	410136	Offset Link, 40 (Not Shown)	1
25	TBD	*****	Live Roller (Based on Cooling Bed Width) (Not Shown)	1





## PL-92211 - Live Roller and Bottle Guide Assembly

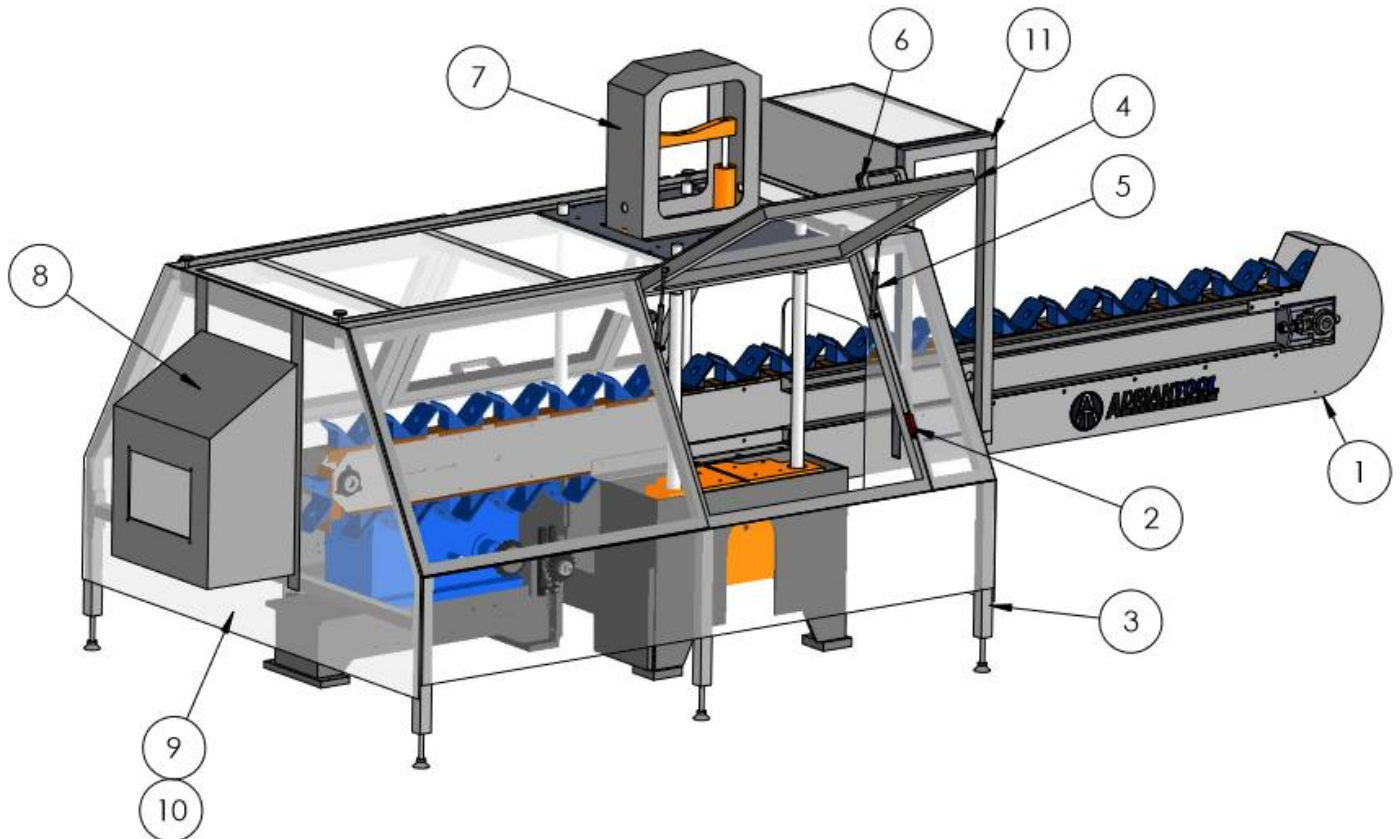
Item	Adrian	OEM	Description	Qty.
1	TBD	*****	Live Roller *Determined by length	1
2	472744	846488	Live Roller Bracket with Bushings	2
3	6255565	1600010	Grease Fitting	2
4	765558	410005	Driven Sprocket, 9-Tooth	1
5	478493	845872	Drive Sprocket 3.5" Bore	1
6	765555	418888	40 Chain, Single/ 10' Box	1
7	765618	410135	Master Link,40 Chain	1
8	765612	410136	Offset Link,40 Chain	1
9	472820	846569	Upper Bottle Guide	TBD
10	479702	*****	Upper Shaft, Bottle Guide *Determined by length	1
11	472821	846563	Bracket, RH Upper Bottle Guide	1
12	472828	846565	Bracket, LH Upper Bottle Guide	1
13	91081	*****	Guard, 40 Chain	1
14	635621	120163	Guard, Dalton Clutch	1
15	470614	*****	Bottle Guide, Stainless	1
16	470671	845143	Counter Weight, Bottle Guide	1
17	363557	212004	1/4-20 X 1" SHCS	2
18	470610	849139	Swing Stop Pivot	2
19	363553	212002	1/4-20 X 3/4" SHCS	2
20	135559	320007	1/4-20 Hex Nut	2
21	470676	849141	Adjusting Arm	2
22	155558	300005	5/16 X 3/8" Shoulder Screw	2
23	470675	849140	Slide Plate, Clamp	2
24	362552	216006	3/8-16 X 1 1/4" SHCS	8
25	188557	355004	3/8 Washer, Plain	8
26	470673	849142	Support Arm	2



## PL-90175 Trimmer Enclosure for a model 10039 – 10041

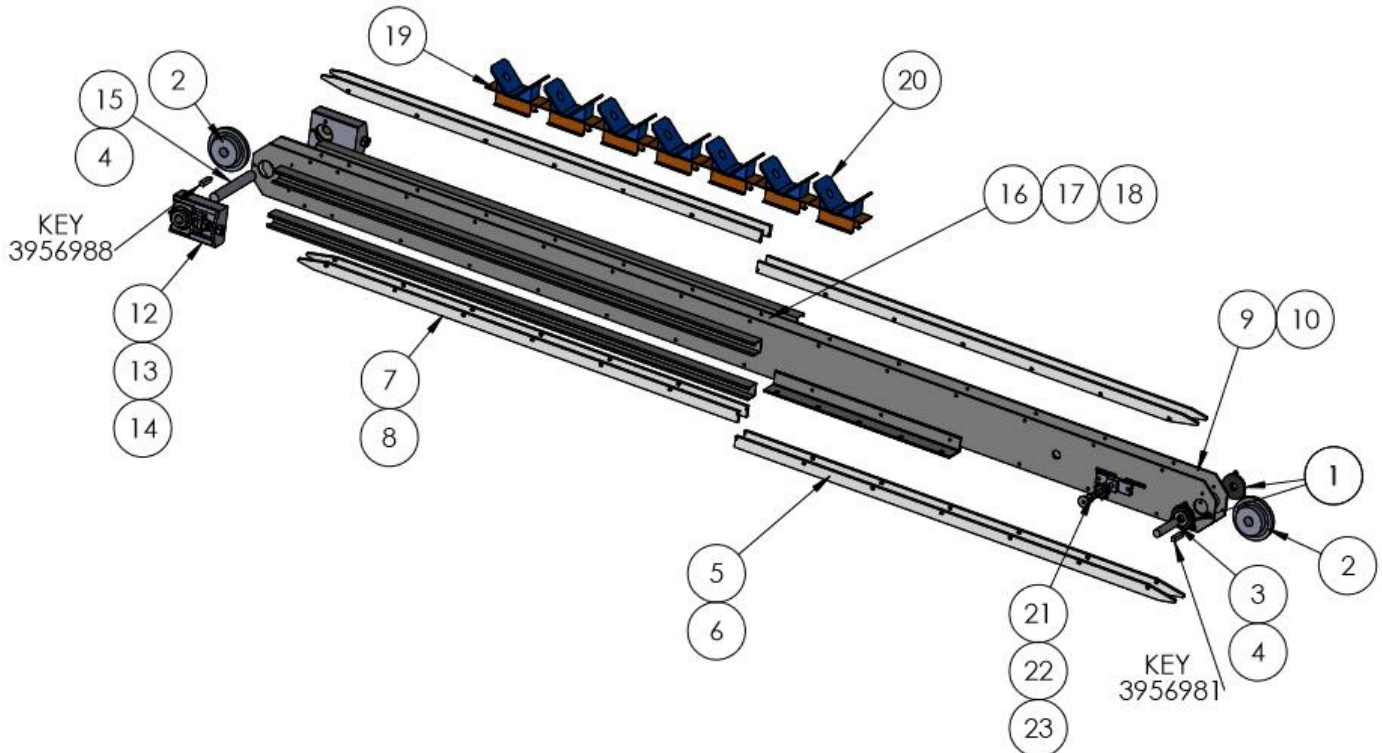
Item	Adrian	Description	Qty.
1	472689	Lower Guard, Load End of Trimmer	1
2	92341	Allen Bradley RFID Safety Switches	3
3	10033-4	Welded Steel, 1 1/2" Square Tubing Enclosure, Primed, and Painted	1
4	10034-4	Welded Doors – Steel Tubing	3
5	91681	Gas Assisted Door Lifts	6
6	91674	Handles	3
7	10009	S-Bar Top Cover w/ Lexan	1
8	10238	Exit End Rejected Bottle Discharge Chute with Guide	1
9	10040-4	Lexan Guarding	1
10	91930	Tamper Proof Screws	30
11	10035	L-Guarding, Enclosure Load End	1

**SOLD AS A COMPLETE ASSEMBLY ONLY**



## 112" Trimmer Load Beam Assembly w/ 12" Index

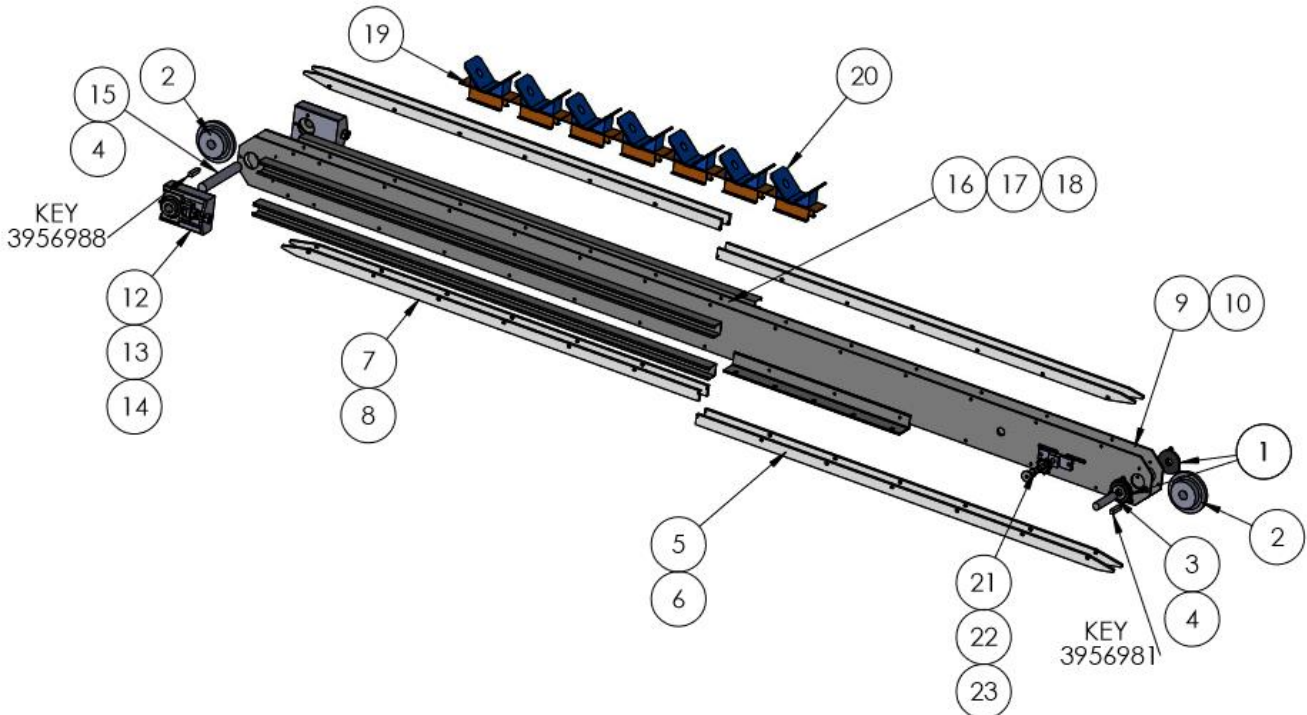
Item	Adrian	OEM	Description	Qty.
1	295521	670063	Flange Bearing	2
2	472197	846374	Sprocket, Tapered w/ 1.25 Bore	2
3	472660	846119	Drive Shaft	1
4	795575	470040	Snap Ring	4
5	654927	108764	Rail, Exit End Opposite (10039)	2
6	652443	106882	Rail, Exit End (10039)	2
7	654923	108762	Rail, Load End Opposite (10039)	2
8	652494	106878	Rail, Load End (10039)	2
9	765332	410226	80HP Chain (10039)	20'
10	765339	410227	Master Link, 80HP Chain	1
11	295554	670008	Take-up Bearing	2
12	413344	832288	Take-up Frame	2
13	3950277	2709644	Threaded Rod, 3/4 -10 x 4"	2
14	138530	325029	Hex Jam Nut, 3/4 - 10	8
15	472688	846155	Idler Shaft	1
16	345518	280035	Rail Keeper (T-Nut) (Not Shown)	60
17	91493	*****	1/4 - 20 x 3/4" BHCS	6
18	378533	245022	1/4 - 20 X 5/8" BHCS	54
19	472673	846142	Bucket Carrier, 6" OC / Half Gallon	40
20	91409	*****	Half Gallon Bucket, Urethane	40
21	430554	829008	Idler Stud	1
22	493961	872713	Index Driven Sprocket, 12-Tooth	1
23	413348	832285	Idler Block	1
24	158666	*****	Roll Pins (Not Shown)	80
25	363557	212004	1/4-20 x 1" SHCS (Not Shown)	80
26	90403	*****	1/4" Flat Washer (Not Shown)	80





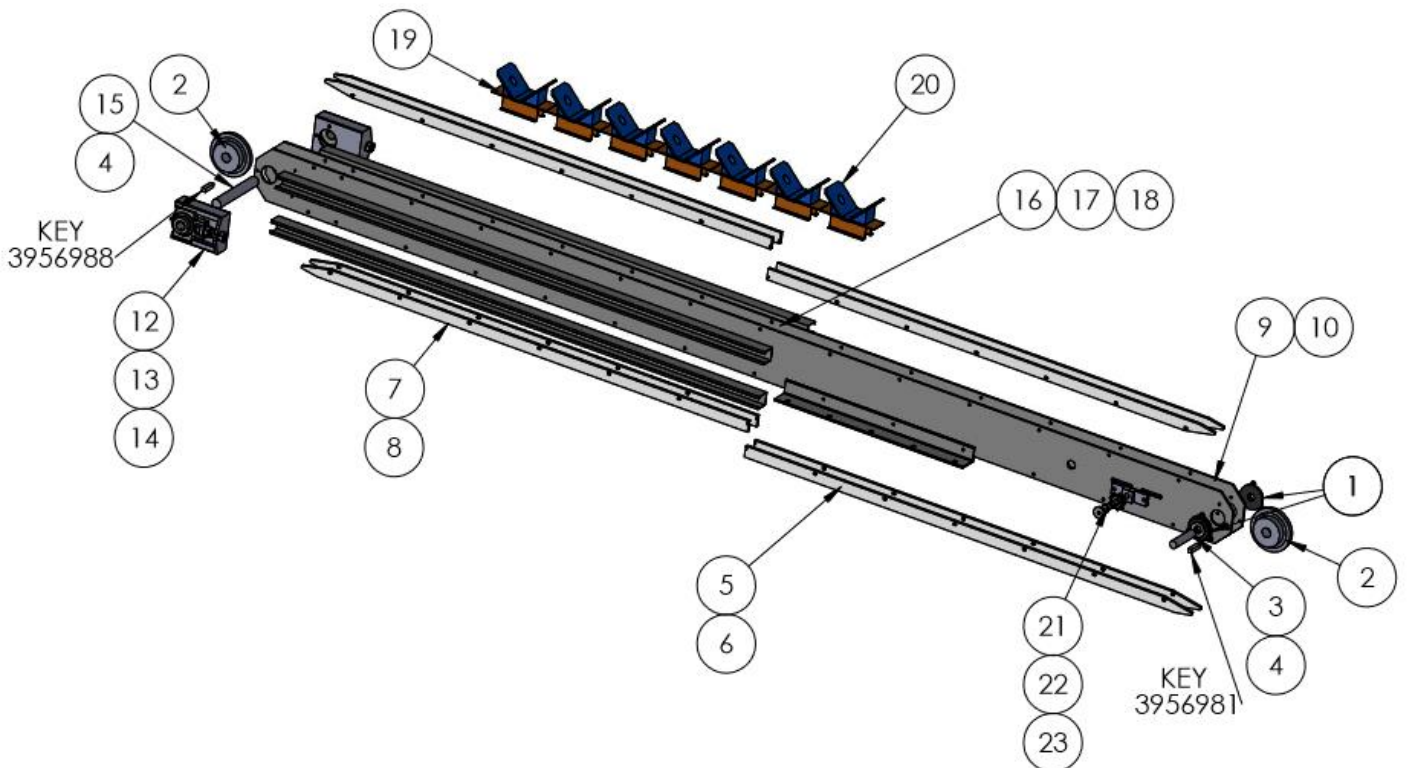
## 112" Trimmer Load Beam Assembly w/ 16" Index

Item	Adrian	OEM	Description	Qty.
1	295521	670063	Flange Bearing	2
2	472197	846374	Sprocket, Tapered w/ 1.25 Bore	2
3	472660	846119	Drive Shaft	1
4	795575	470040	Snap Ring	4
5	654927	108764	Rail, Exit End Opposite (10039)	2
6	652443	106882	Rail, Exit End (10039)	2
7	654923	108762	Rail, Load End Opposite (10039)	2
8	652494	106878	Rail, Load End (10039)	2
9	765332	410226	80HP Chain (10039)	20'
10	765339	410227	Master Link, 80HP Chain	1
11	295554	670008	Take-up Bearing	2
12	413344	832288	Take-up Frame	2
13	3950277	2709644	Threaded Rod, 3/4 -10 x 4"	2
14	138530	325029	Hex Jam Nut, 3/4 - 10	8
15	472688	846155	Idler Shaft	1
16	345518	280035	Rail Keeper (T-Nut) (Not Shown)	60
17	91493	*****	1/4 - 20 x 3/4" BHCS	6
18	378533	245022	1/4 - 20 X 5/8" BHCS	54
19	472677	846142	Bucket Carrier, 8" OC / Gallon	30
20	91422	*****	Gallon Bucket, Urethane	30
21	430554	829008	Idler Stud	1
22	496605	871190	Index Driven Sprocket, 9-Tooth	1
23	413348	832285	Idler Block	1
24	158666	*****	Roll Pins (Not Shown)	60
25	363557	212004	1/4-20 x 1" SHCS (Not Shown)	60
26	90403	*****	1/4" Flat Washer (Not Shown)	60



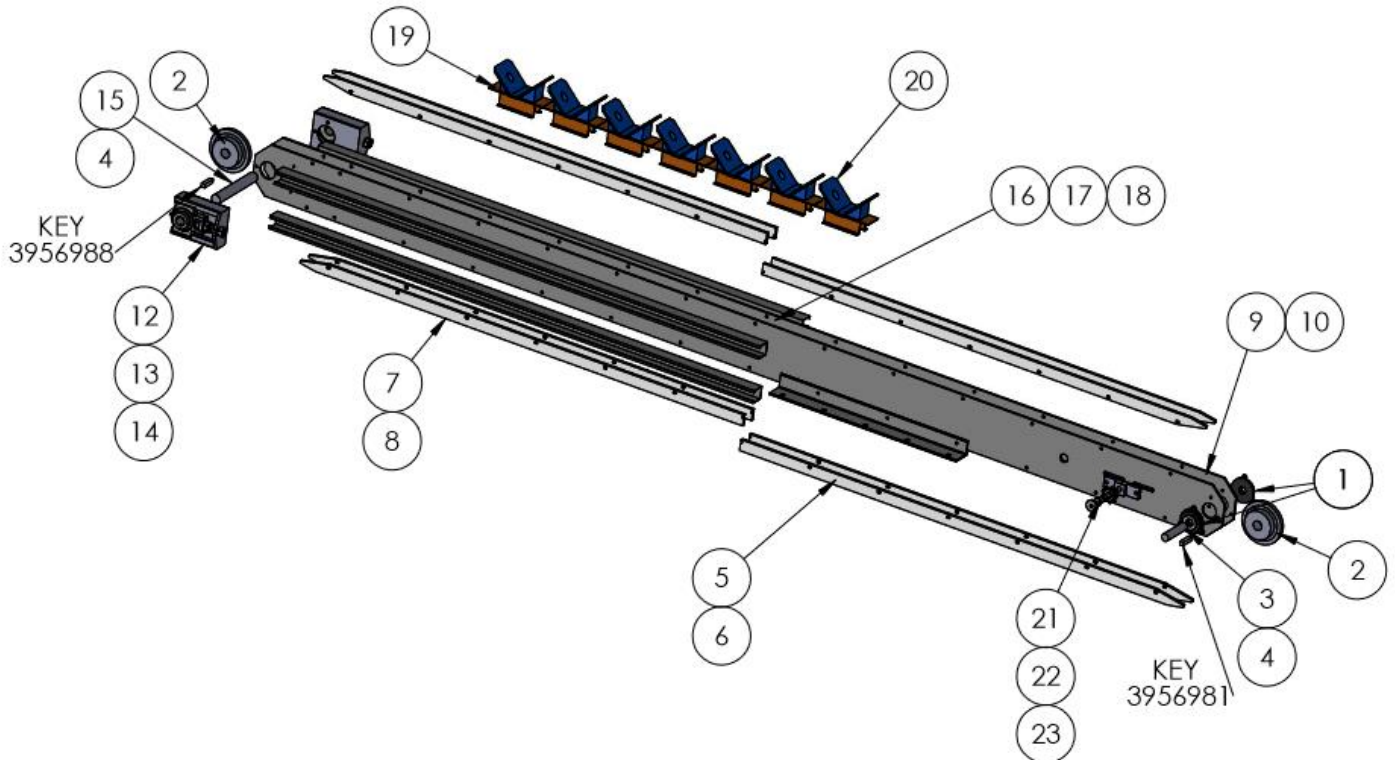
## 136" Trommer Load Beam Assembly w/ 12" Index

Item	Adrian	OEM	Description	Qty.
1	295521	670063	Flange Bearing	2
2	472197	846374	Sprocket, Tapered w/ 1.25 Bore	2
3	472660	846119	Drive Shaft	1
4	795575	470040	Snap Ring	4
5	654927	108764	Rail, Exit End Opposite (10040-41)	2
6	652443	106882	Rail, Exit End (10040-41)	2
7	654921	108763	Rail, Load End Opposite (10040-41)	2
8	652445	106880	Rail, Load End (10040-41)	2
9	765332	410226	80HP Chain (10040-41)	24'
10	765339	410227	Master Link, 80HP Chain	1
11	295554	670008	Take-up Bearing	2
12	413344	832288	Take-up Frame	2
13	3950277	2709644	Threaded Rod, 3/4 -10 x 4"	2
14	138530	325029	Hex Jam Nut, 3/4 - 10	8
15	472688	846155	Idler Shaft	1
16	345518	280035	Rail Keeper (T-Nut) (Not Shown)	60
17	91493	*****	1/4 - 20 x 3/4" BHCS	6
18	378533	245022	1/4 - 20 X 5/8" BHCS	54
19	472673	846142	Bucket Carrier, 6" OC / Half Gallon	48
20	91409	*****	Half Gallon Bucket, Urethane	48
21	430554	829008	Idler Stud	1
22	493961	872713	Index Driven Sprocket, 12-Tooth	1
23	413348	832285	Idler Block	1
24	158666	*****	Roll Pins (Not Shown)	96
25	363557	212004	1/4-20 x 1" SHCS (Not Shown)	96
26	90403	*****	1/4" Flat Washer (Not Shown)	96



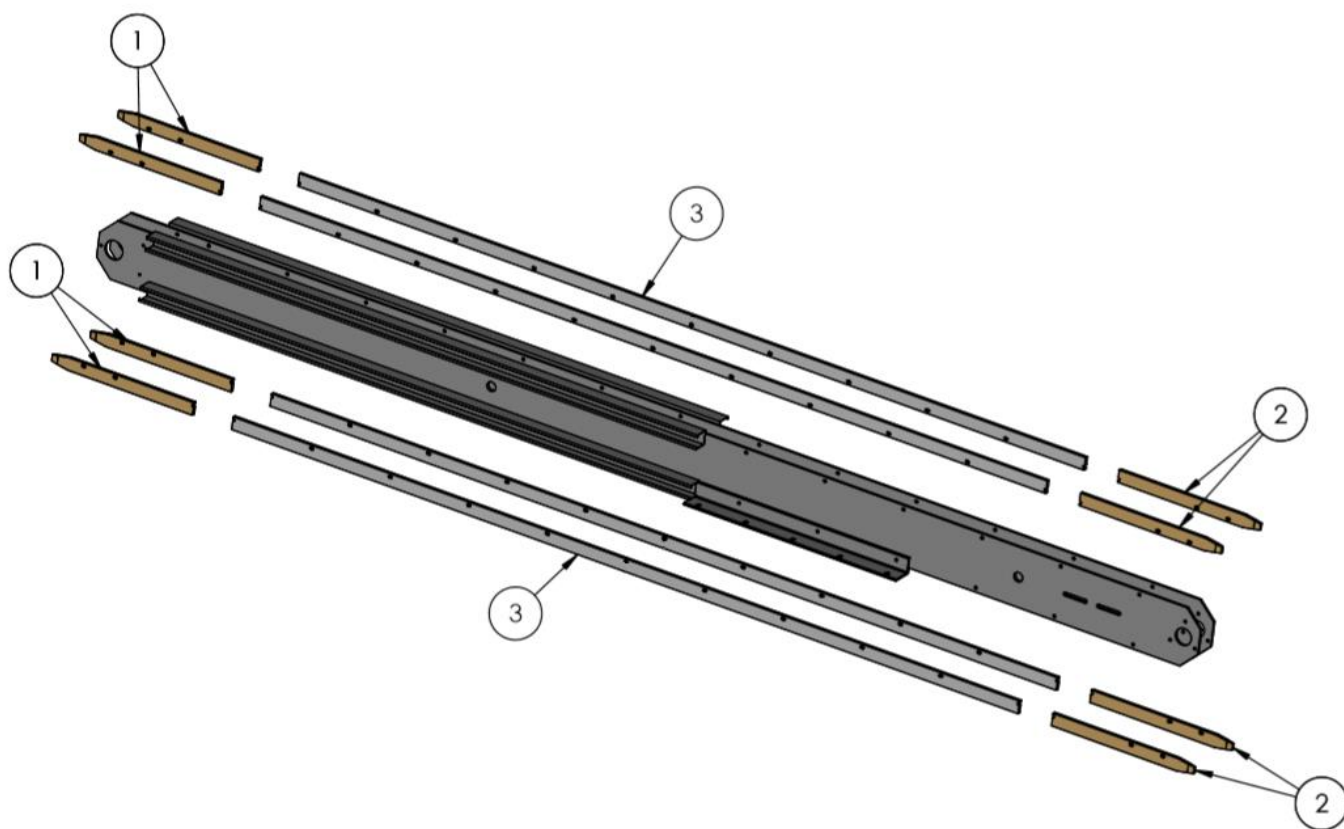
## 136" Trimmer Load Beam Assembly w/ 16" Index

Item	Adrian	OEM	Description	Qty.
1	295521	670063	Flange Bearing	2
2	472197	846374	Sprocket, Tapered w/ 1.25 Bore	2
3	472660	846119	Drive Shaft	1
4	795575	470040	Snap Ring	4
5	654927	108764	Rail, Exit End Opposite (10040-41)	2
6	652443	106882	Rail, Exit End (10040-41)	2
7	654921	108763	Rail, Load End Opposite (10040-41)	2
8	652445	106880	Rail, Load End (10040-41)	2
9	765332	410226	80HP Chain (10040-41)	24'
10	765339	410227	Master Link, 80HP Chain	1
11	295554	670008	Take-up Bearing	2
12	413344	832288	Take-up Frame	2
13	3950277	2709644	Threaded Rod, 3/4 -10 x 4"	2
14	138530	325029	Hex Jam Nut, 3/4 - 10	8
15	472688	846155	Idler Shaft	1
16	345518	280035	Rail Keeper (T-Nut) (Not Shown)	60
17	91493	*****	1/4 - 20 x 3/4" BHCS	6
18	378533	245022	1/4 - 20 X 5/8" BHCS	54
19	472677	846144	Bucket Carrier, 8" OC / Gallon	36
20	91422	*****	Gallon Bucket, Urethane	36
21	430554	829008	Idler Stud	1
22	496605	871190	Index Driven Sprocket, 9-Tooth	1
23	413348	832285	Idler Block	1
24	158666	*****	Roll Pins (Not Shown)	72
25	363557	212004	1/4-20 x 1" SHCS (Not Shown)	72
26	90403	*****	1/4" Flat Washer (Not Shown)	72



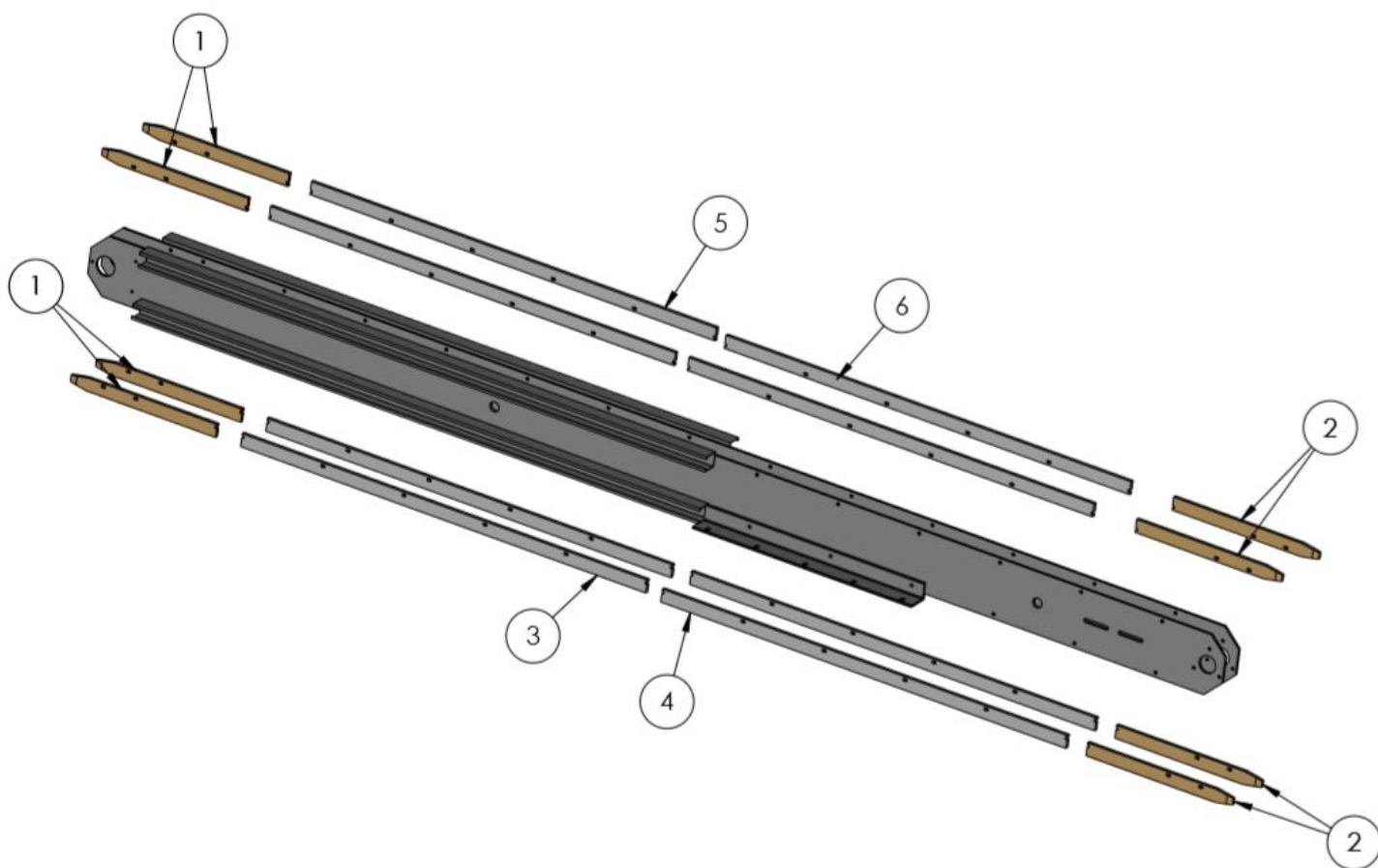
## Trimmer - Hybrid Brass Rails 112" Load Beam

Item	Adrian	Description	Qty.
1	91887	Hybrid Bronze Rail, Load End	4
2	91579	Hybrid Bronze Rail, Exit End	4
3	91912	UHMW Rail	4
4	345518	T-Nuts / Rail Keepers	60
5	91493	1/4"-20 x 3/4" BHCS (Not Shown)	6
6	378533	1/4"-20 x 5/8" BHCS (Not Shown)	54



## Trimmer - Hybrid Brass Rails 136" Load Beam

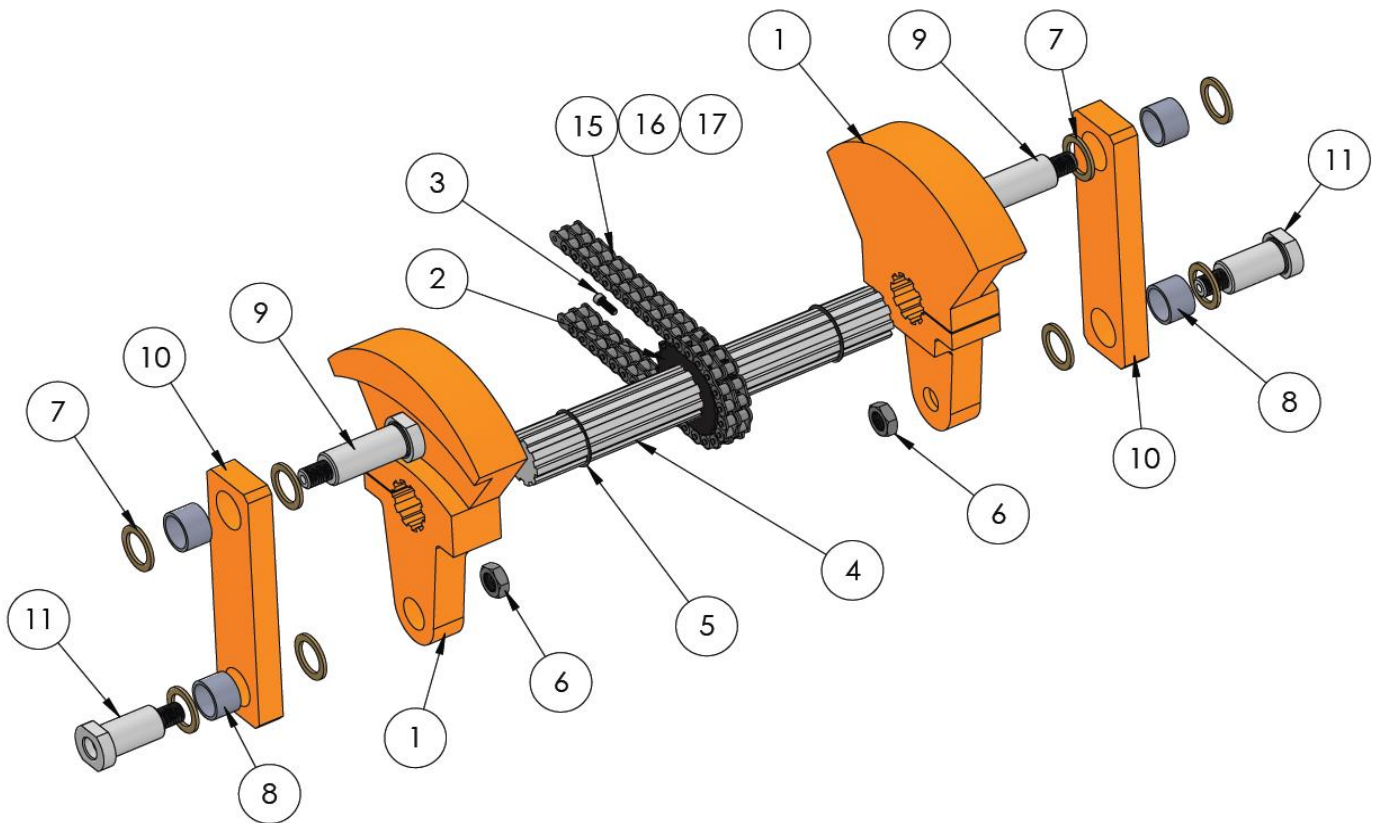
Item	Adrian	Description	Qty.
1	91577	Hybrid Bronze Rail, Load End	4
2	91579	Hybrid Bronze Rail, Exit End	4
3	652445-1	UHMW Rail, Load End-Hybrid	2
4	652443-1	UHMW Rail, Exit End-Hybrid	2
5	654921-1	UHMW Rail, Load End Opp Hybrid	2
6	654927-1	UHMW Rail, Exit End Opp Hybrid	2
7	345518	T-Nuts/Rail Keepers (Not Shown)	60
8	91493	1/4"-20 x 3/4" BHCS (Not Shown)	6
9	378533	1/4"-20 x 5/8" BHCS (Not Shown)	54





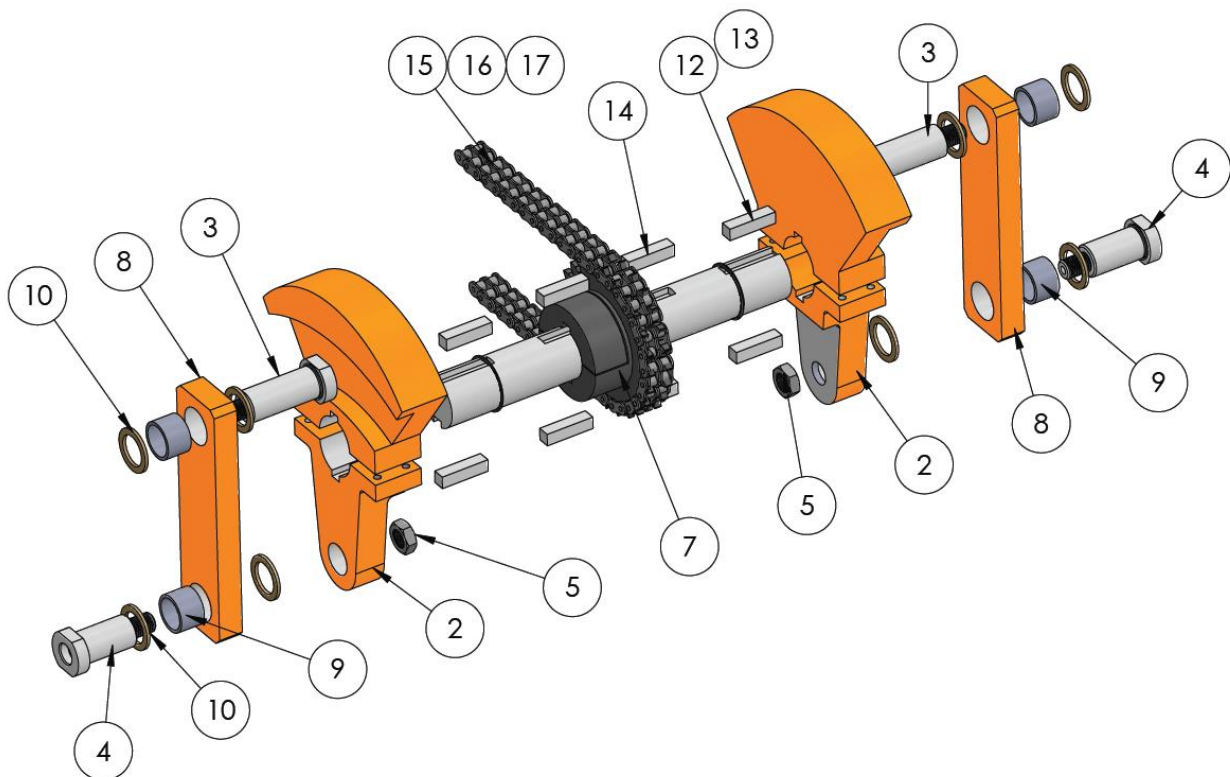
## Trimmer Platen Drive Assembly with Spline Shaft - Models 10039 - 10041

Item	Adrian	OEM	Description	Qty.
1	413304	832298	Crank Counter Weights (Matched Set)	1 Set
2	430765	829410	Driven Sprocket, D50	1
3	360552	219006	1/4 – 20 x 3/4 Socket Set Screw	1
4	472616	846131	Crank Shaft	1
5	795571	470043	Snap Ring	2
6	138515	325030	3/4 – 16 Jam Nut	2
7	275516	640031	Thrust Washer	8
8	268530	615029	Bearing	4
9	430768	829415	Link Pin	2
10	413308	832295	Link	2
11	430565	829010	Crank Pin	2
12	765564	410018	Drive Sprocket, D50P21 (Not Shown)	1
13	90512	*****	Bushing, P1 x 1.25" (Not Shown)	1
14	785557	450004	Idler Sprocket, D50B17	1
15	765692	410176	Roller Chain, 50-2	1
16	765610	410139	Master Link, 50-2	1
17	765675	410140	Offset Link, 50-2	1
18	90166	*****	Hub, 1.50" (for Ferguson Gearbox) (Not Shown)	1
19	90167	*****	Hub, 1.25" (for Geneva Gearbox) (Not Shown)	1
6	295593	670072	Flange Bearing (Not Shown)	2



## Trimmer Platen Drive Upgrade – Assembly No. 90031-50 Double Keyed Shaft, Split Crank & Double 50 Chain Retrofit

Item	Adrian	OEM	Description	Qty.
1	635092	120976	Crank Shaft, Double Keyed	1
2	635098	120975	Split Crank Counter Weights (Sold as a Set)	1 Set
3	430768	829415	Link Pin	2
4	430565	829010	Crank Pin	2
5	138515	325030	3/4 – 16 Jam Nut	4
6	295593	670072	Flange Bearing (Not Shown)	2
7	635099	120977	Driven Sprocket, Split D-50 w/ SHCS	1
8	413308	832295	Link	2
9	268530	615029	Bearing	4
10	275516	640031	Thrust Washer	8
11	795571	470043	Snap Ring	2
12	636390	121279	Key	4
13	90426	*****	10 – 32 x 3/4" FHCS	4
14	90138	*****	Key	2
15	765692	410176	Roller Chain, 50-2 – 10' / Box	1
16	765610	410139	Master Link, 50-2	1
17	765675	410140	Offset Link, 50-2	1
18	90289	*****	Drive Sprocket, D50Q24 (Not Shown)	1
19	90166	*****	Hub, 1.50" (for Ferguson Gearbox) (Not Shown)	1
20	90167	*****	Hub, 1.25" (for Geneva Gearbox) (Not Shown)	1
21	785557	450004	Idler Sprocket, D50 (Not Shown)	1



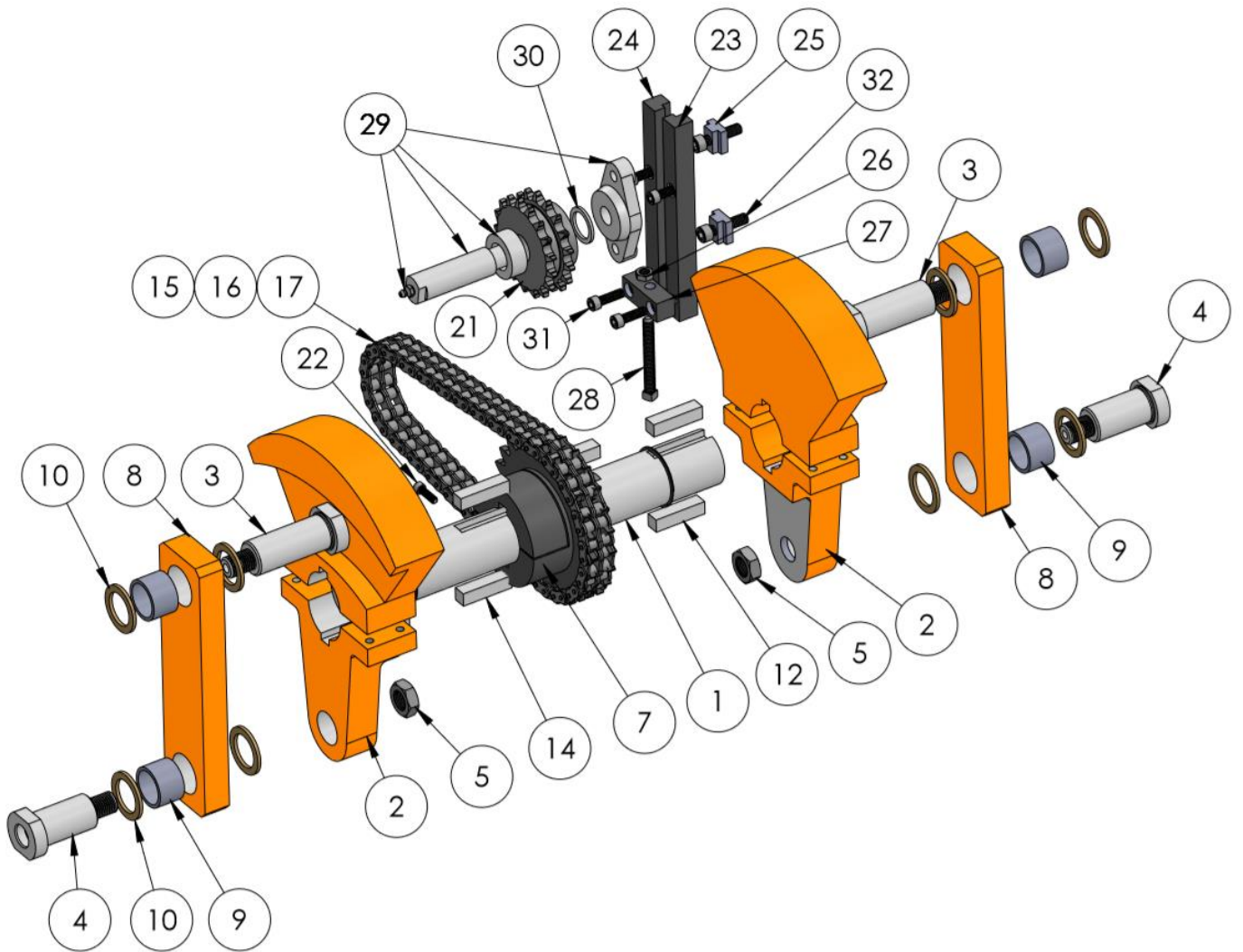


## Double Keyed Shaft, Split Crank & Double 60 Chain Retrofit

Item	Adrian	OEM	Description	Qty.
1	635092	120976	Crank Shaft, Double Keyed	1
2	635098	120975	Split Crank Counter Weights (Sold as a Set)	1 Set
3	430768	829415	Link Pin	2
4	430565	829010	Crank Pin	2
5	138515	325030	3/4 – 16 Jam Nut	4
6	295593	670072	Flange Bearing (Not Shown)	2
7	632628	126125	Driven Sprocket, Split D60 w/ SHCS	1
8	413308	832295	Link	2
9	268530	615029	Bearing	4
10	275516	640031	Thrust Washer	8
11	795571	470043	Snap Ring	2
12	636390	121279	Key	4
13	90426	*****	10 – 32 x 3/4 FHCS	4
14	90138	*****	Key	2
15	765670	410149	Roller Chain, 60-2 – 10' / Box	1
16	765135	410320	Master Link, 60-2	1
17	765157	410304	Offset Link, 60-2	1
18	765732	410426	Drive Sprocket, D60	1
19	90166	*****	Hub, 1.50" (for Ferguson Gearbox) (Not Shown)	1
20	90167	*****	Hub, 1.25" (for Geneva Gearbox) (Not Shown)	1
21	785582	450056	Idler Sprocket, D60	1
22	360552	219006	1/4-20 x 3/4 Socket Set Screw	1
23	472666	846111	T-nut Bar, LH	1
24	472665	846110	T-nut Bar, RH	1
25	118563	335012	Nut, T-slot	2
26	138564	325018	3/8-16 Hex Jam Nut	2
27	470825	849560	Adjusting Block	1
28	358549	205087	SQ. HD Set Screw 3/8 - 16 x 3	1
29	785556	450001	Drive Tensioner GM-S03	1
30	275513	640032	Thrust Washer	1
31	367553	214002	5/16 – 18 x 1" SHCS	4
32	362556	216001	3/8 – 16 x 1.5" SHCS	2

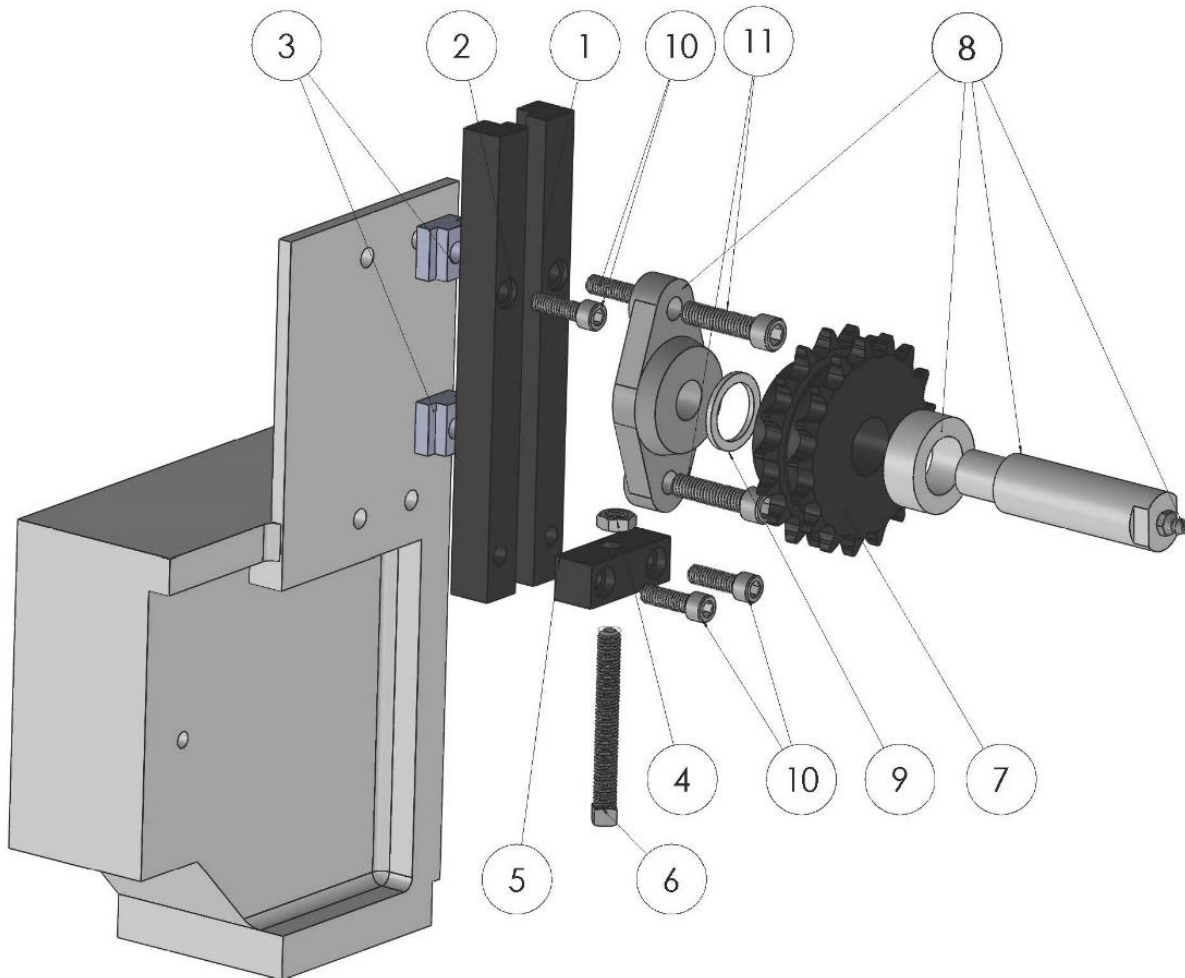
**Trimmer Platen Drive Layout on Next Page**

## Trimmer Platen Drive Parts Noted on Pervious Page



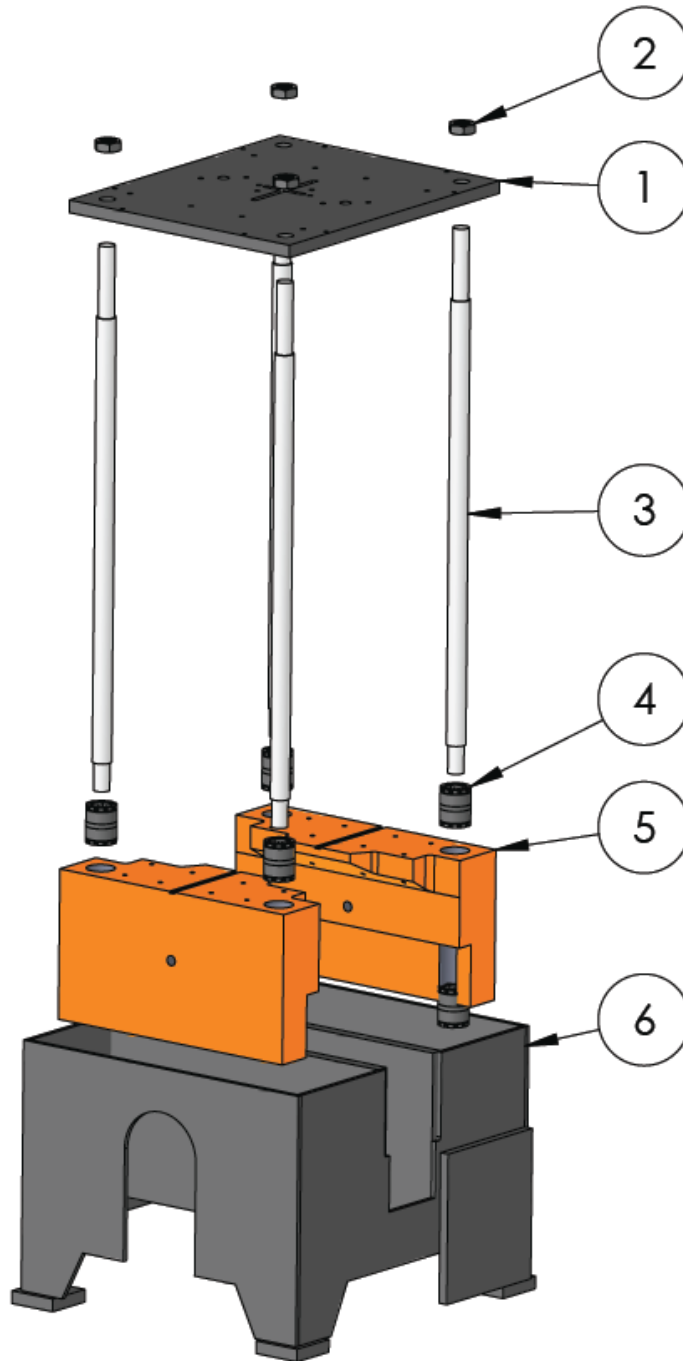
## Chain Tensioner, Platen Drive – Trimmer Models 10039 - 10042

Item	Adrian	OEM	Description	Qty.
1	472666	846111	T-nut Bar, LH	1
2	472665	846110	T-nut Bar, RH	1
3	118563	335012	Nut, T-slot	2
4	138564	325018	3/8-16 Hex Jam Nut	2
5	470825	849560	Adjusting Block	1
6	358549	205087	SQ. HD Set Screw 3/8 - 16 x 3	1
7	785582	450056	Sprocket, Idler D60	1
8	785556	450001	Drive Tensioner GM-S03	1
9	275513	640032	Thrust Washer	1
10	367553	214002	5/16 – 18 x 1" SHCS	4
11	362556	216001	3/8 – 16 x 1.5" SHCS	2



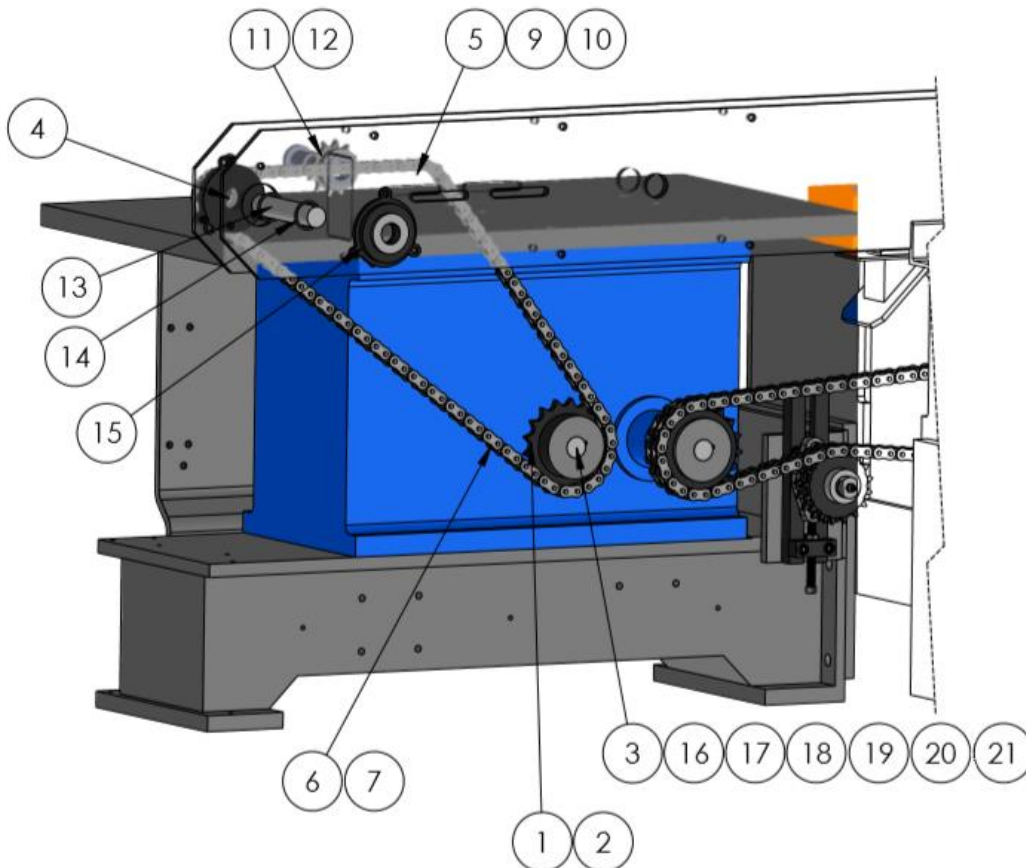
## Trimmer Base Assembly – Models 10039 - 10041

Item	Adrian	OEM	Description	Qty.
1	472639	846127	Upper Platen	1
2	138519	325037	Hex Jam Nut, 1 1/4" - 7	8
3	472630	846129	Guide Rod (Tie Bar)	4
4	225558	660005	Ball Bushing	8
5	472659	846107	Lower Platen, Aluminum	2
6	91001	*****	Trimmer Base	1



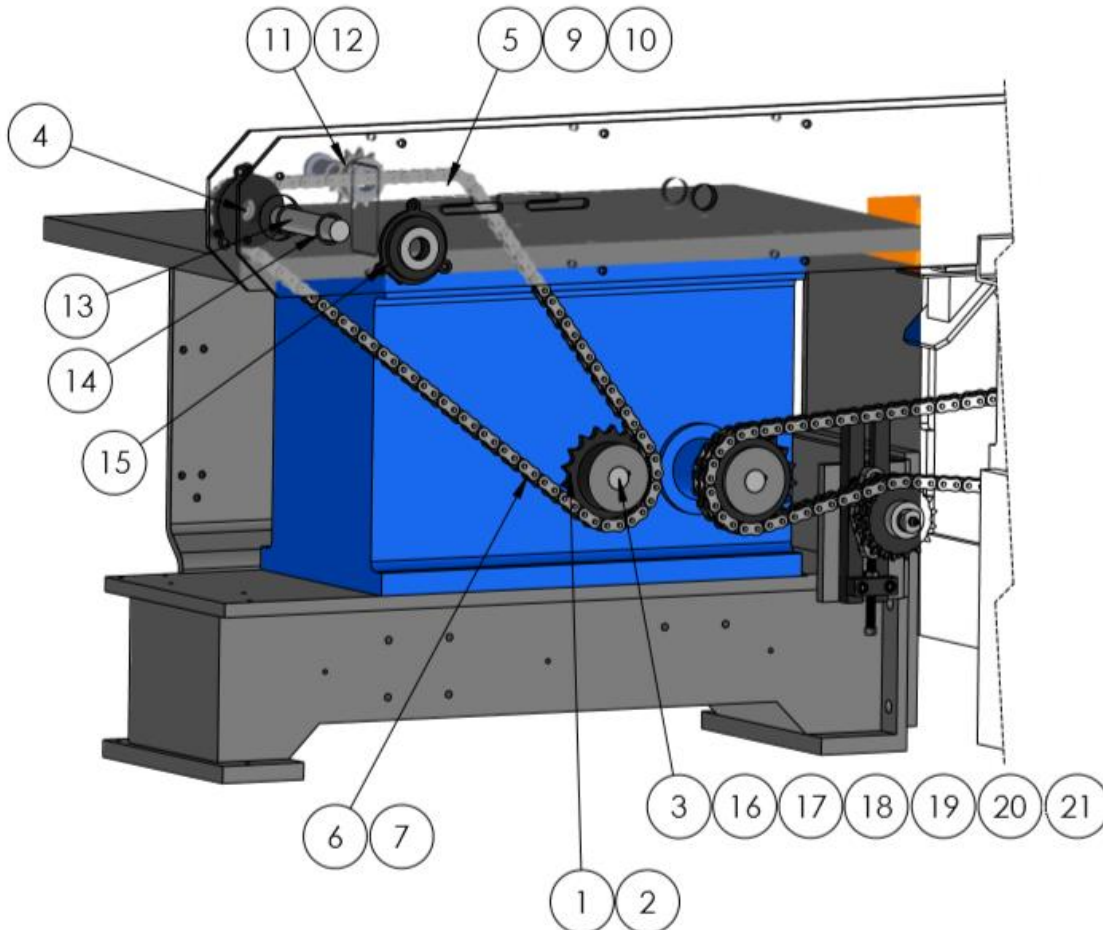
## Trimmer 12" Index with Ferguson Gearbox

Item	Adrian	OEM	Description	Qty.
1	496640	871189	Drive Sprocket, 50 Chain – 27 Tooth	1
2	479968	847715	Hub Sprocket - Adjustable	1
3	496608	871195	Hub for 1 1/2" Ferguson Drive Shaft	1
4	493961	872713	Driven Index Sprocket, 12 Tooth	1
5	785535	450020	Idler Sprocket, 50 Chain	1
6	765699	410177	50 Chain, 10' Box	1
7	765619	410137	Master Link, 50 Chain	1
8	765614	410138	Off Set Link, 50 Chain	1
9	430554	829088	Idler Stud	1
10	275513	640032	Thrust Washer	2
11	413348	832285	Idler Block	1
12	430557	829004	Idler Clamp	1
13	472660	846119	Drive Shaft with Tapered End	1
14	795575	470040	Snap Rings	2
15	295521	670063	Flange Bearings	2
16	188589	*****	3/8" Flat Washer (Not Shown)	8
17	90679	*****	3/8" Lock Washer (Not Shown)	4
18	91870	*****	3/8-16 X 1-1/4" Hex Head Bolt (Not Shown)	4
19	91871	*****	3/8-16 X 7/8" Hex Head Bolt (Not Shown)	4
20	91872	*****	3/8-16 X 1/4" Set Screw (Not Shown)	2
21	90139	*****	Key (Not Shown)	1



## Trimmer 16" Index with Ferguson Gearbox

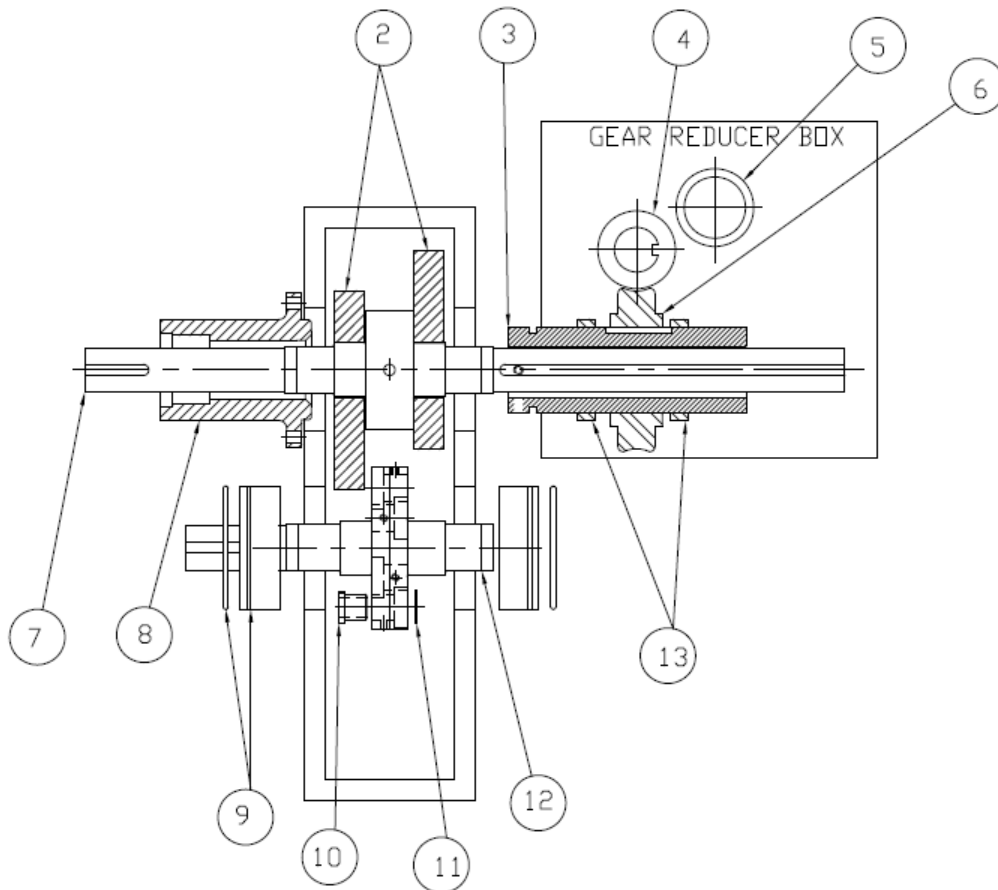
Item	Adrian	OEM	Description	Qty.
1	496640	871189	Drive Sprocket, 50 Chain – 27 Tooth	1
2	479968	847715	Hub Sprocket - Adjustable	1
3	496608	871195	Hub for 1 1/2" Ferguson Drive Shaft	1
4	496605	871190	Driven Index Sprocket, 9 Tooth	1
5	785535	450020	Idler Sprocket, 50 Chain	1
6	765699	410177	50 Chain, 10' Box	1
7	765619	410137	Master Link, 50 Chain	1
8	765614	410138	Off Set Link, 50 Chain	1
9	430554	829088	Idler Stud	1
10	275513	640032	Thrust Washer	2
11	413348	832285	Idler Block	1
12	430557	829004	Idler Clamp	1
13	472660	846119	Drive Shaft with Tapered End	1
14	795575	470040	Snap Rings	2
15	295521	670063	Flange Bearings	2
16	188589	*****	3/8" Flat washer (Not Shown)	8
17	90679	*****	3/8" Lock Washer (Not Shown)	4
18	91870	*****	3/8-16 X 1-1/4" Hex Head Bolt (Not shown)	4
19	91871	*****	3/8-16 X 7/8" Hex Head Bolt (Not Shown)	4
20	91872	*****	3/8-16 X 1/4" Set Screw (Not Shown)	2
21	90139	*****	Key (Not Shown)	1





## PL-90949 Ferguson Index Drive & Reducer Assembly

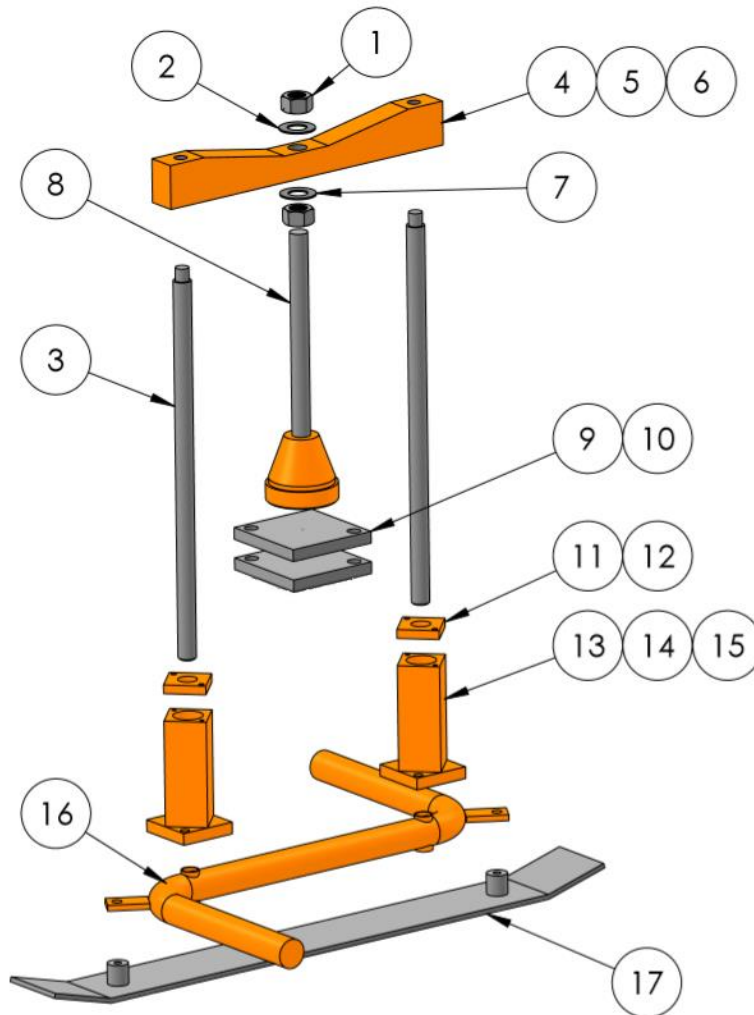
Item	Adrian	Description	Qty.
1	PL-90950	Seal & Bearing Kit (not shown)	1
2	90916	Cams	2
3	90940	Shaft Sleeve	1
4	92081	Worm Shaft	1
5	90956	Shim, Worm Shaft	1
6	90951	Worm Gear, Bronze	1
7	90302	Output Cam Shaft	1
8	90939	Shaft Housing	1
9	90959	Eccentric Bearing	2
10	90942	Eccentric Cam Bushing	6
11	90935	Hardened Washer	6
12	90931	Output Cam Follower Shaft	1
13	90955	Spacer for Reducer	2
14	91103	Cam Bushing Straight Bore	6
15	92410	Washer, Shim	1
16	92411	Washer, Shim	1



**Ferguson Model: P500**  
**Drive Code: P5-3-FM150-130**

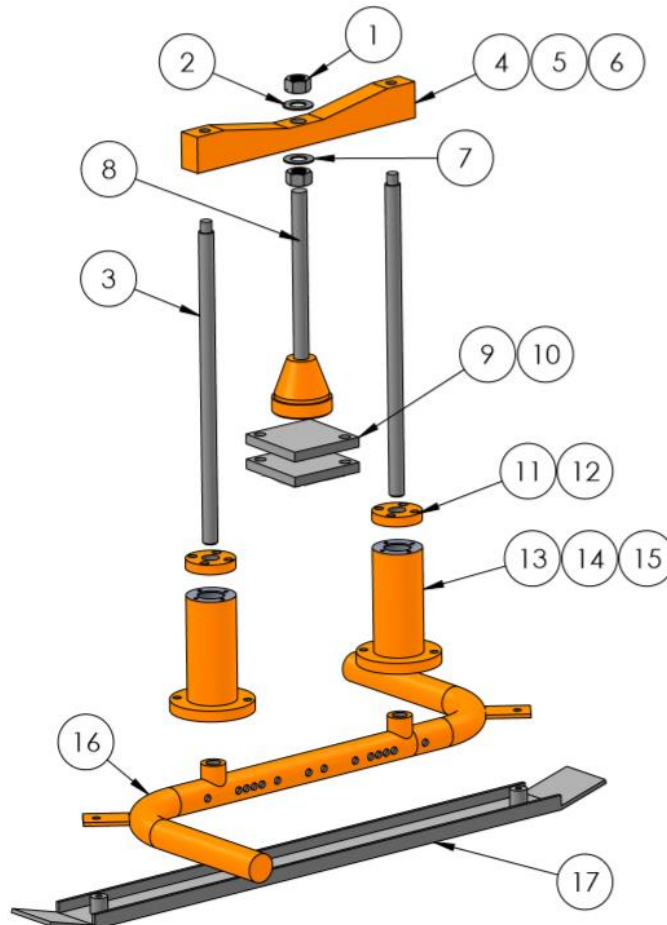
## PL-91394 - S-Bar Assembly - Model 10026 Trimmer

Item	Adrian	OEM	Description	Qty.
1	138515	325030	3/4 – 16 Jam Nut Hex	2
2	188565	355010	3/4" Flat Washer	6
3	443483	882852	Guide Rod	2
4	481098	853975	Cross Bar	1
5	185563	350012	1/2" Lock Washer	2
6	360551	219003	1/2 – 13 x 1 1/2" SHCS	2
7	185567	350014	3/4 Lock Washer	2
8	481045	853980	Stop Rod, Upper	1
9	481046	853981	Stop Pad	2
10	155562	300016	.500 x 1" Shoulder Screw	2
11	443470	882849	Cap	2
12	365514	210038	10 – 32 x 1/2" SHCS	4
13	443485	882850	Bushing Housing	2
14	441580	883059	Spacer	2
15	225556	660001	Bushing	4
16	443477	882844	S-Bar	1
17	91464	*****	Container Guide	1
18	443479	882847	Block, Stop Rod (Not Shown)	2
19	360532	219026	1/2 - 13 x 6" SHCS (Not Shown)	4
20	487340	854289	Lower Stop Rod (Not Shown)	2



## PL-90094 S-Bar Assembly Model 10039 – 10041 Traditional

Item	Adrian	OEM	Description	Qty.
1	138515	325030	3/4 – 16 Jam Nut Hex	2
2	188565	355010	3/4 Flat Washer	6
3	481092	853976	Guide Rod	2
4	481098	853975	Cross Bar	1
5	185563	350012	1/2 Lock Washer	2
6	360551	219003	1/2 – 13 x 1 1/2" SHCS	2
7	185567	350014	3/4 Lock Washer	2
8	481045	853980	Stop Rod, Upper	1
9	481046	853981	Stop Pad	2
10	155562	300016	.500 x 1" Shoulder Screw	1
11	481099	853977	Cap	2
12	378533	245022	1/4 – 20 x 5/8" BHCS	8
13	487306	854291	Bushing Housing	2
14	487305	854290	Spacer	2
15	225556	660001	Bushing	4
16	487342	854286	S-Bar, Standard OEM	1
17	487349	854287	Container Guide / Stainless	1
18	487340	854289	Stop Rod, Lower (Not Shown)	2
19	481097	853974	Block, Lower Stop Rod (Not Shown)	2



## PL-91244 - Aluminum S-Bar Assembly / Model 10039 - 10041

Item	Adrian	OEM	Description	Qty.
1	138515	325030	3/4 – 16 Jam Nut Hex	2
2	188565	355010	3/4 Flat Washer	2
3	481092	853976	Guide Rod	2
4	481098	853975	Cross Bar	1
5	185563	350012	1/2 Lock Washer	2
6	360551	219003	1/2 – 13 x 1 1/2" SHCS	2
7	185567	350014	3/4 Lock Washer	2
8	481045	853980	Stop Rod, Upper	1
9	481046	853981	Stop Pad	2
10	155562	300016	.500 x 1" Shoulder Screw	1
11	481099	853977	Cap	2
12	378533	245022	1/4 – 20 x 5/8" BHCS	8
13	487306	854291	Bushing Housing	2
14	487305	854290	Spacer	2
15	225556	660001	Bushing	4
16	91221	*****	Aluminum S-Bar	1
17	91222	*****	Aluminum Container Guide	1
18	92372	*****	Fasteners for Guide (1/2 -13 FHCS)	2

